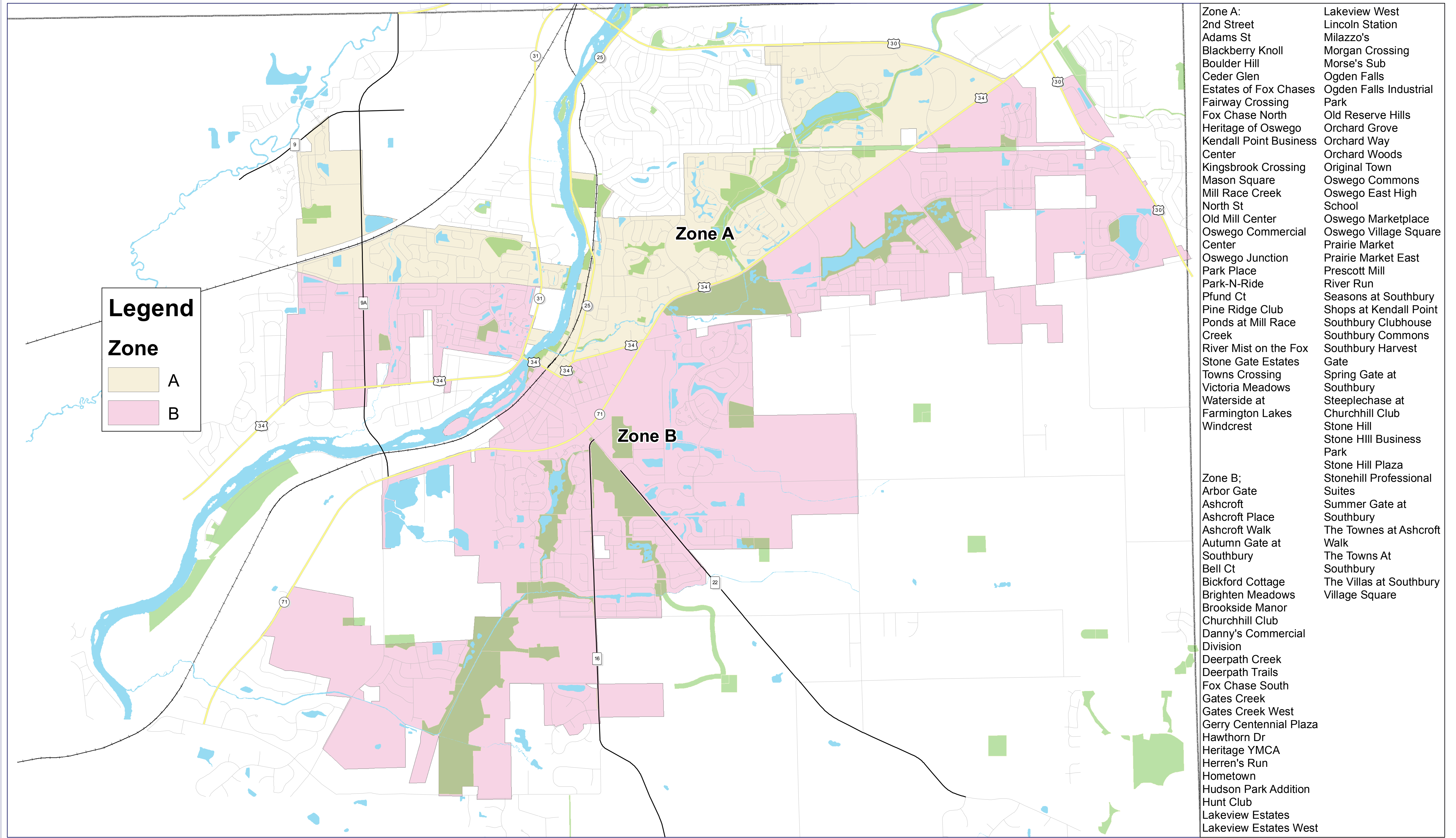
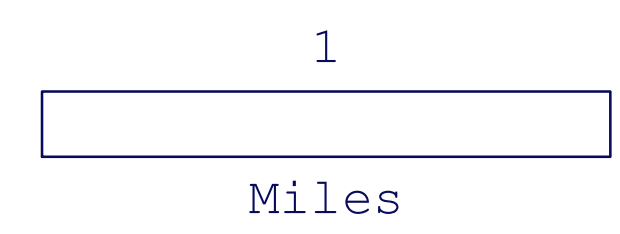
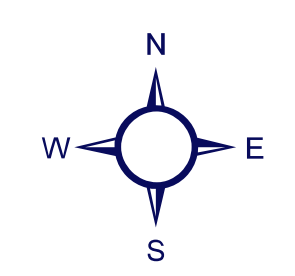


Brush Collection Zones



- | | |
|-------------------------------|--|
| Zone A: | Lakeview West |
| 2nd Street | Lincoln Station |
| Adams St | Milazzo's |
| Blackberry Knoll | Morgan Crossing |
| Boulder Hill | Morse's Sub |
| Ceder Glen | Ogden Falls |
| Estates of Fox Chases | Ogden Falls Industrial Park |
| Fairway Crossing | Old Reserve Hills |
| Fox Chase North | Orchard Grove |
| Heritage of Oswego | Orchard Way |
| Kendall Point Business Center | Orchard Woods |
| Kingsbrook Crossing | Original Town |
| Mason Square | Oswego Commons |
| Mill Race Creek | Oswego East High School |
| North St | Oswego Marketplace |
| Old Mill Center | Oswego Village Square |
| Oswego Commercial Center | Prairie Market |
| Oswego Junction | Prairie Market East |
| Park Place | Prescott Mill |
| Park-N-Ride | River Run |
| Pfund Ct | Seasons at Southbury |
| Pine Ridge Club | Shops at Kendall Point |
| Ponds at Mill Race Creek | Southbury Clubhouse |
| River Mist on the Fox | Southbury Commons |
| Stone Gate Estates | Southbury Harvest Gate |
| Towns Crossing | Spring Gate at Southbury |
| Victoria Meadows | Steeplechase at Churchhill Club |
| Waterside at Farmington Lakes | Stone Hill |
| Windcrest | Stone Hill Business Park |
| | Stone Hill Plaza |
| | Stonehill Professional Suites |
| Zone B: | Summer Gate at Southbury |
| Arbor Gate | The Townes at Ashcroft Walk |
| Ashcroft | The Towns At Southbury |
| Ashcroft Place | The Villas at Southbury Village Square |
| Ashcroft Walk | |
| Autumn Gate at Southbury | |
| Bell Ct | |
| Bickford Cottage | |
| Brighten Meadows | |
| Brookside Manor | |
| Churchhill Club | |
| Danny's Commercial Division | |
| Deerpath Creek | |
| Deerpath Trails | |
| Fox Chase South | |
| Gates Creek | |
| Gates Creek West | |
| Gerry Centennial Plaza | |
| Hawthorn Dr | |
| Heritage YMCA | |
| Herren's Run | |
| Hometown | |
| Hudson Park Addition | |
| Hunt Club | |
| Lakeview Estates | |
| Lakeview Estates West | |

Date Printed: 2/19/2015



The requested map will be created for study purposes only. Please refer to the official recorded plats or deeds for the actual legal descriptions and property dimensions. No liability is assumed for the accuracy of the data delineated herein, either expressed or implied by the Village of Oswego or its employees. This work is protected by the United States Copyright Act of 1976 (17 U.S.C. Sec101 et seq). You are not permitted to use and/or reproduce any part of a copyrighted work of the Village of Oswego in violation of Federal Copyright Law. Doing so may result in prosecution under such law. If you wish to use property in which the Village of Oswego owns a copyright, you must obtain written permission through the Community Development Department in the Village of Oswego, located at 100 Parkers Mill, Oswego, Illinois 60543.