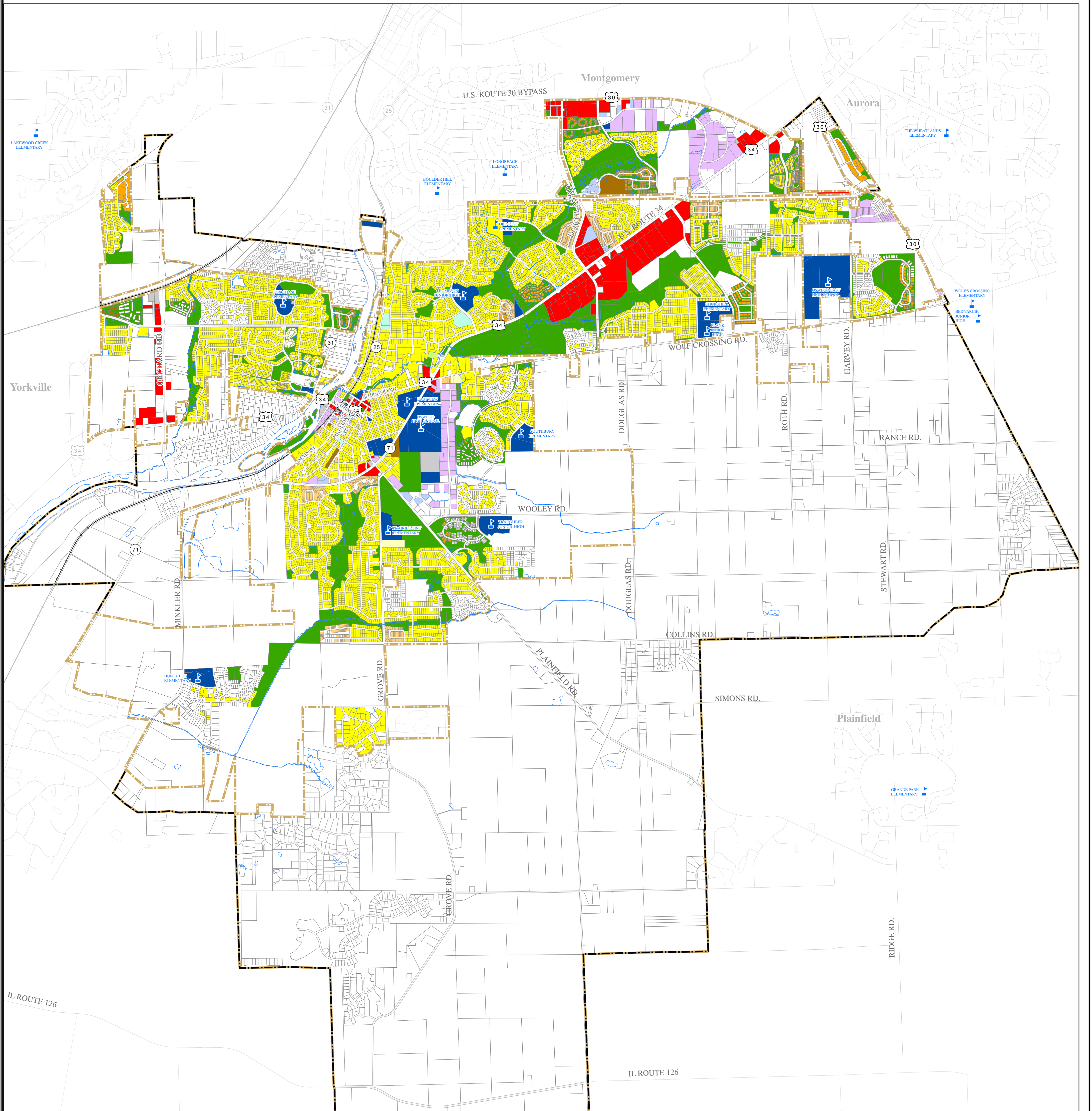
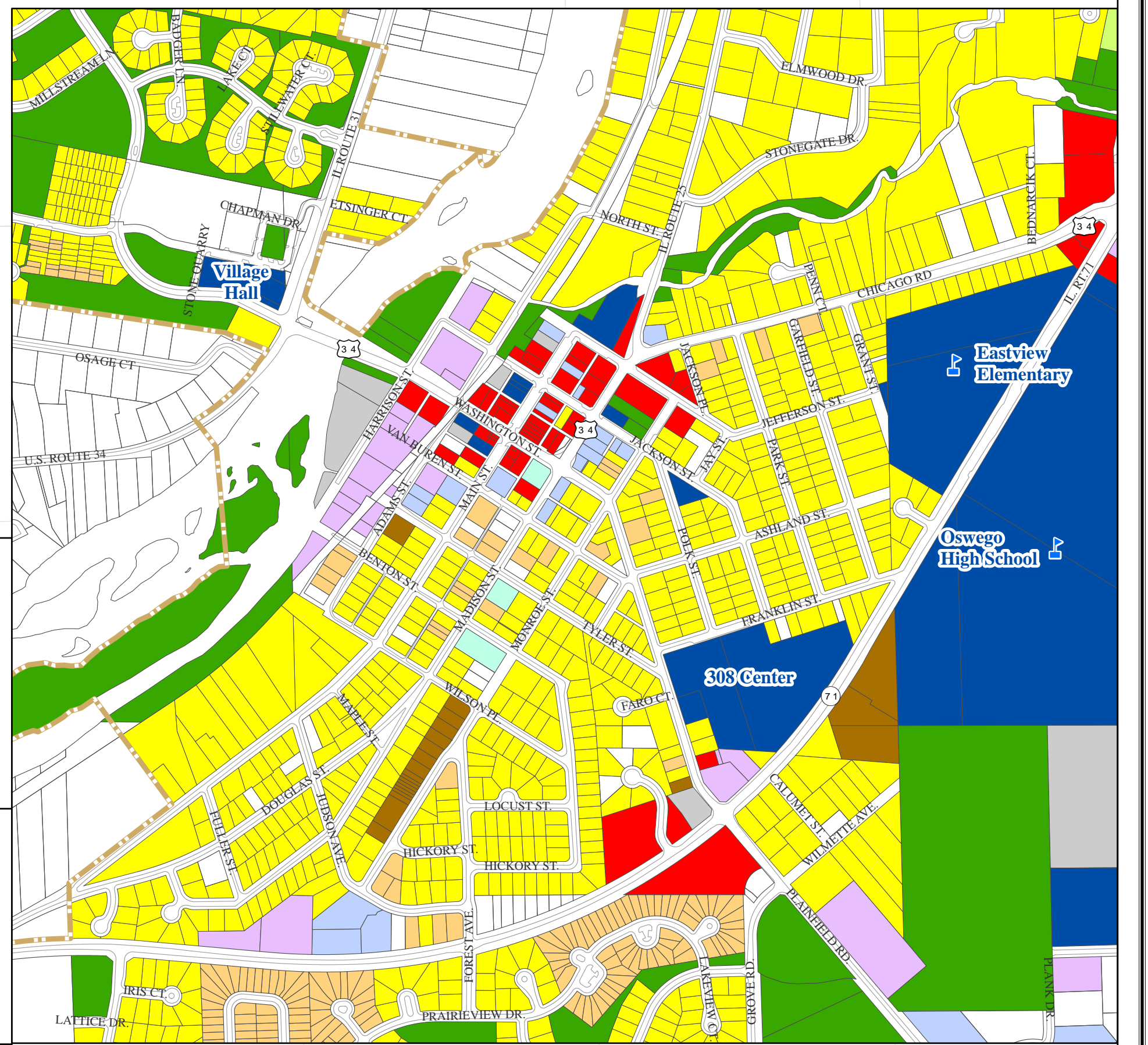
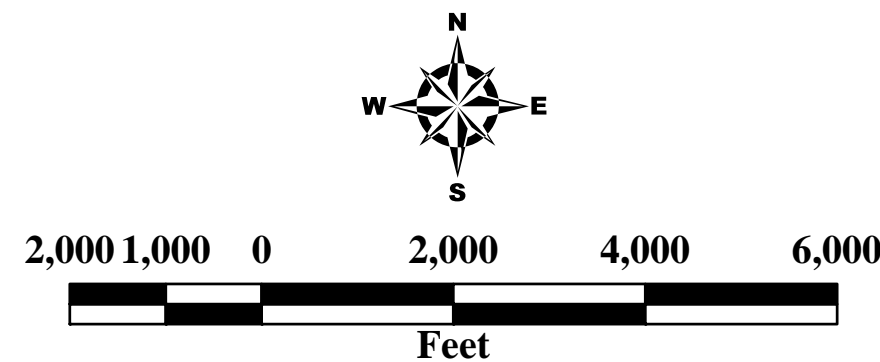


Existing Land Use



Existing Land Use

- Cemetery
- Commercial
- Duplex
- Golf Course, Open Space, Park
- Governmental, Institutional
- Light Industrial
- Multi-Tenant Residential
- Office
- Parking Lots, Utility
- Religious
- Residential
- Senior Housing
- Townhome
- Vacant/Pending Development
- Corporate Boundary
- Boundary Agreement



Village of Oswego
Community Development
100 Parkers Mill
Oswego, IL 60543
Phone: 630-554-3618
Fax: 630-554-3306
Website: www.oswegoil.org
E-mail: info@oswegoil.org

The requested map will be created for study purposes only. Please refer to the official recorded plats or deeds for the actual legal descriptions and property dimensions. No liability is assumed for the accuracy of the data delineated herein, either expressed or implied by the Village of Oswego or its employees. This work is protected by the United States Copyright Act of 1976 (17 U.S.C. Sec 101 et seq.). You are not permitted to use and/or reproduce any part of a copyrighted work of the Village of Oswego in violation of Federal Copyright Law. Doing so may result in prosecution under such law. If you wish to use property in which the Village of Oswego owns a copyright, you must obtain written permission through the Village of Oswego's Community Development Department located at 100 Parkers Mill, Oswego, Illinois 60543.