

# 2350 State Route 31

Oswego, IL 60543

LAND - OTHER FOR SALE



john  
greene  
COMMERCIAL

john greene Commercial | 1311 S Route 59, Naperville, IL 60564 | 630.229.2290



## OFFERING SUMMARY

<b>Sale Price:</b>	\$1,495,000
<b>Lot Size:</b>	5.43± Acres
<b>Price / SF:</b>	\$6.32
<b>PINs:</b>	03-17-152-008 03-17-152-003
<b>Taxes:</b>	\$4635.30(2021)
<b>Zoning:</b>	B-2

## PROPERTY OVERVIEW

5.43± AC on two contiguous parcels on East Side of Route 31, just north of Oswego Village Hall.

## DEMOGRAPHICS

	1 MILE	3 MILES	5 MILES
Total Households	1,902	13,758	34,459
Total Population	5,527	41,113	104,390
Average HH Income	\$91,163	\$88,666	\$83,050

**Mike Waseen**  
mikewaseen@johngreenecommercial.com  
630.360.1196

The information contained herein is from sources john greene Real Estate deems reliable, but is not guaranteed. This offer may be withdrawn from the market or be subject to a change in price or terms without advance notice. Seller reserves the right to reject any and all offers. Duplication is expressly prohibited. 2019



# 2350 State Route 31 | Oswego, IL 60543

LAND - OTHER FOR SALE

john greene Commercial | 1311 S Route 59, Naperville, IL 60564 | 630.229.2290

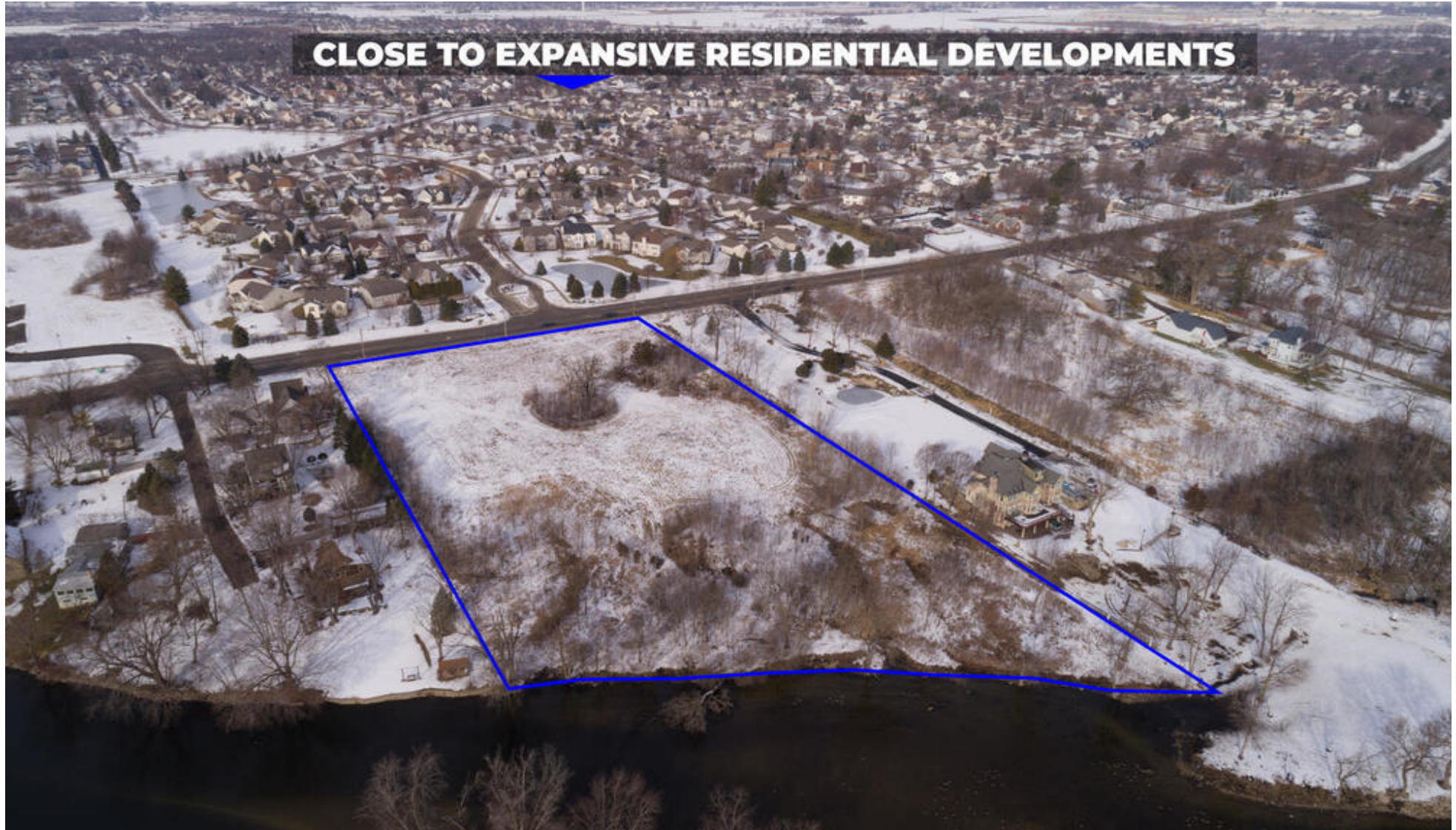


**Mike Waseen**  
mikewaseen@johngreenecommercial.com  
630.360.1196

The information contained herein is from sources john greene Real Estate deems reliable, but is not guaranteed. This offer may be withdrawn from the market or be subject to a change in price or terms without advance notice. Seller reserves the right to reject any and all offers. Duplication is expressly prohibited. 2019

john  
greene  
COMMERCIAL

john greene Commercial | 1311 S Route 59, Naperville, IL 60564 | 630.229.2290



**Mike Waseen**  
mikewaseen@johngreenecommercial.com  
630.360.1196

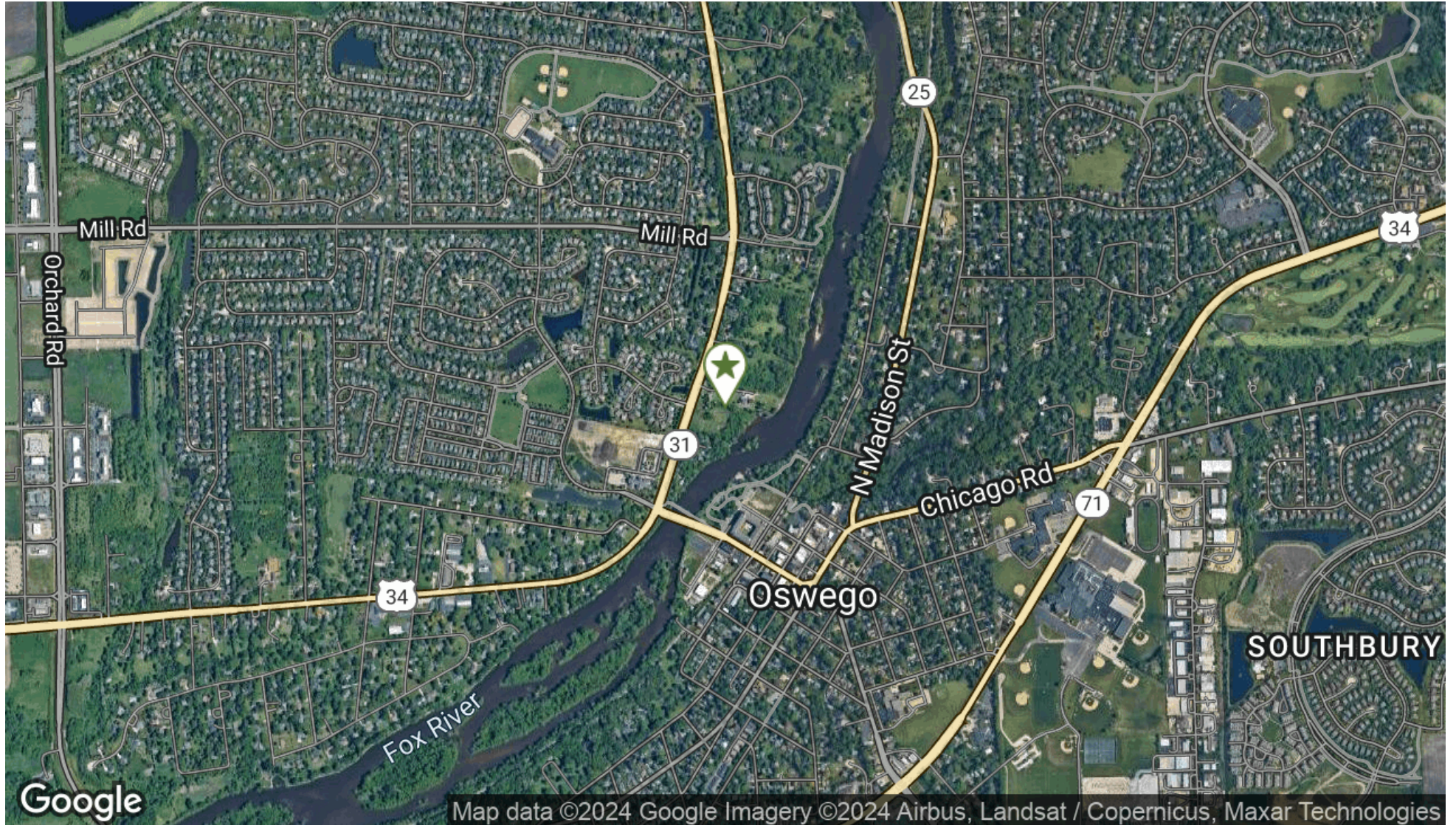
The information contained herein is from sources john greene Real Estate deems reliable, but is not guaranteed. This offer may be withdrawn from the market or be subject to a change in price or terms without advance notice. Seller reserves the right to reject any and all offers. Duplication is expressly prohibited. 2019



# 2350 State Route 31 | Oswego, IL 60543

LAND - OTHER FOR SALE

john greene Commercial | 1311 S Route 59, Naperville, IL 60564 | 630.229.2290



**Mike Waseen**  
mikewaseen@johngreenecommercial.com  
630.360.1196

The information contained herein is from sources John Greene Real Estate deems reliable, but is not guaranteed. This offer may be withdrawn from the market or be subject to a change in price or terms without advance notice. Seller reserves the right to reject any and all offers. Duplication is expressly prohibited. 2019

**john  
greene**  
COMMERCIAL