

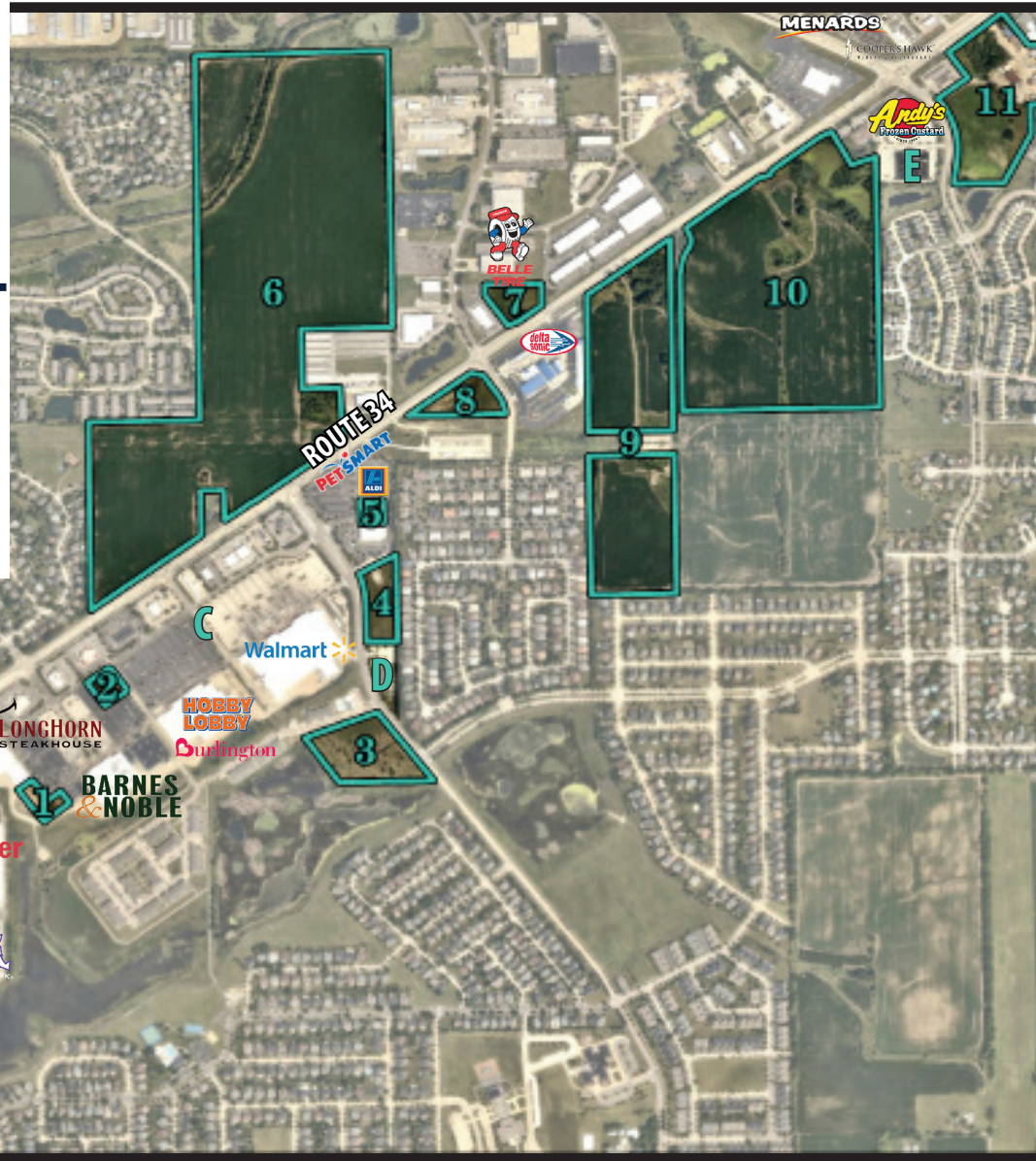


Route 34 Commercial Corridor

Oswego, Illinois

Kendall County's largest shopping area.

Join major retailers on the largest commercial corridor in one of Chicagoland's fastest-growing communities, with access to Aurora, Naperville and Kendall County markets. For more information, scan the QR code below.



Opportunities

Available Tenant Spaces

- A** **Oswego Commons**
20,554 sqft | anchored by Target/Vasa Fitness
- B** **Gerry Centennial Plaza**
11,401 sqft | anchored by Meijer
- C** **Prairie Market**
14,000 sqft | anchored by Walmart/Kohl's
- D** **950 Fifth Street**
10,938 sqft | standalone
- E** **201 Odgen Falls Blvd**
45,000 sqft | standalone

Available Land Sites

- 1** **Prairie Market Inline**
1 acre | pad ready
- 2** **Prairie Market Outline**
1 acre | pad ready
- 3** **Fifth Street Site**
6 acres | greenfield
- 4** **560 Fifth Street**
3 acres | greenfield
- 5** **Prairie Market East Inline**
0.5 acres | pad ready
- 6** **Kendall Point North**
90 acres | greenfield
- 7** **Belle Tire Outlot**
2 acres | greenfield
- 8** **Kendall Point South**
5 acres | greenfield
- 9** **1630 US Highway 34**
30 acres | greenfield
- 10** **Ogden Falls Southeast**
58 acres | greenfield
- 11** **Ogden Falls Southwest**
15 acres | greenfield



>30K

daily traffic
count

\$114K

median household
income

>270K

people within
15 minutes



Available Tenant Spaces



A Oswego Commons
20,554 sqft | Anchored by Target and Vasa Fitness



B Gerry Centennial Plaza
13,788 sqft | Anchored by Meijer



C Prairie Market
14,000 sqft | Anchored by Walmart/Kohl's

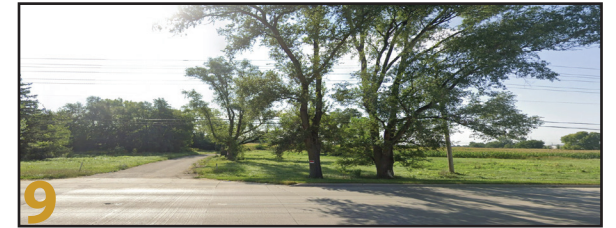


D 950 Fifth Street
10,938 sqft | Standalone building



E 201 Ogden Falls Blvd
45,000 sqft | Standalone building

Available Land Sites



CONTACT US

Kevin R. Leighty
Economic Development Director
630.551.2334
KLeighty@oswegoil.org
oswegoil.org/business