



PROPERTY HIGHLIGHTS

- Excellent Exposure
- Prime Corner Lot
- Immediately Available
- Downtown Oswego
- Storage Space
- Retail, Coffee, Restaurant
- Excellent Location

JASON PESOLA

Cell: 630-486-7321
jason@thepesolagroup.com

1960 Springbrook Square Dr #100
Naperville, IL 60564

FOR LEASE - \$3,750/MO

PRIME CORNER IN DOWNTOWN OSWEGO
1,806 SF - 5 S. MADISON ST. OSWEGO, IL



PROPERTY OVERVIEW

Experience the prime location at 5 S. Madison, right in the heart of Historic Downtown Oswego! Situated at the vibrant intersection of US RT 34 and Madison Ave, this property offers visibility and convenience, just steps away from the shops and attractions of Downtown Oswego.

Zoned for retail, this property has a generous layout with ample parking to accommodate your customers. With its premier exposure and high traffic count, your business will thrive! Featuring three spacious overhead doors, open ceilings, ample storage, and more, this corner lot presents endless retail or restaurant possibilities.

PROPERTY SUMMARY

PROPERTY TYPE:	RETAIL
SECONDARY TYPE:	STOREFRONT/OFFICE
PARKING:	12 SPACES
ACRES:	.50 ACRES
ZONED:	B2
PARCEL ID:	03-17-332-005

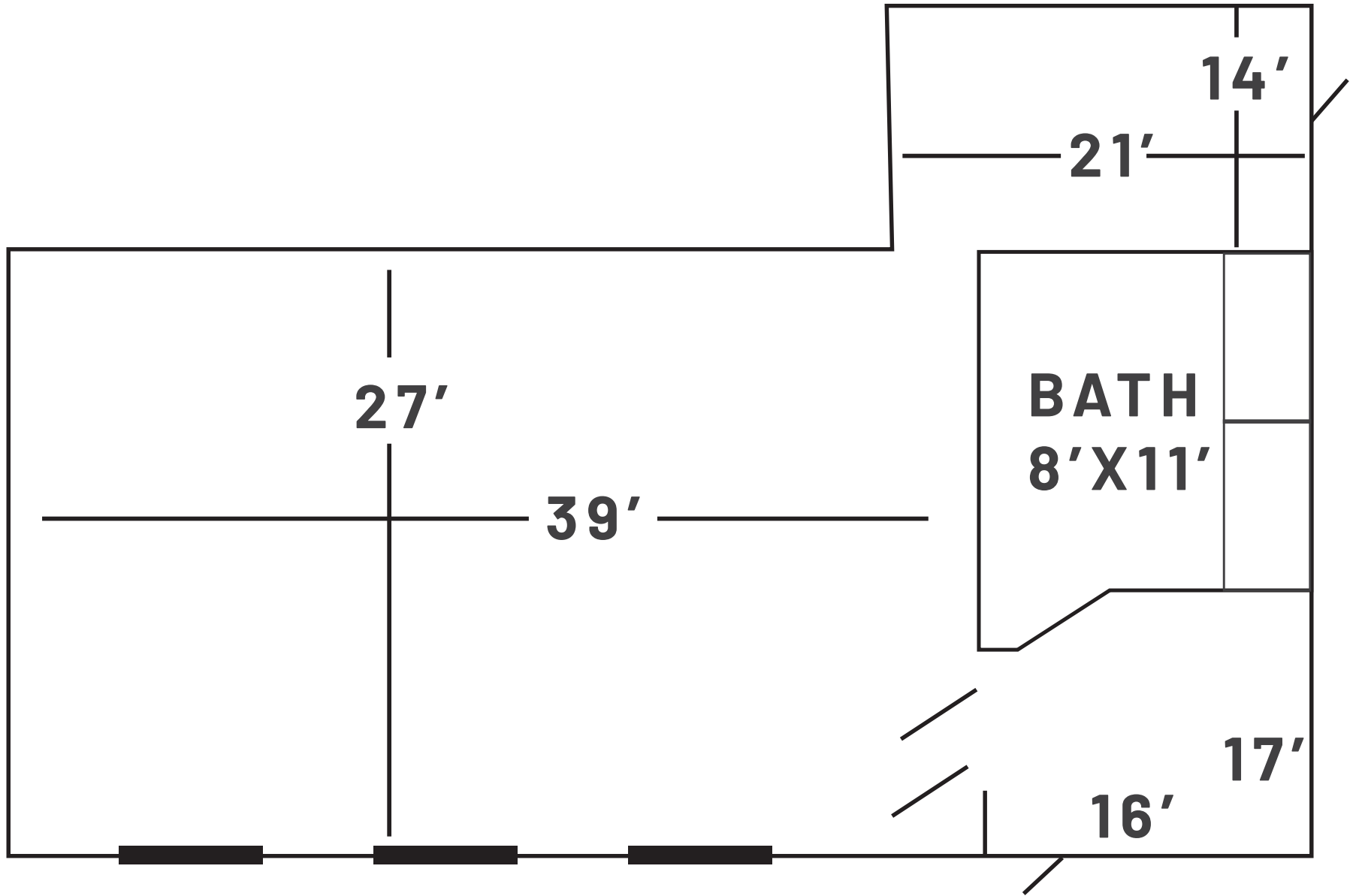


JASON PESOLA

Cell: 630-486-7321
jason@thepesolagroup.com

INTEGRA
COMMERCIAL
REAL ESTATE

1960 Springbrook Square Dr #100
Naperville, IL 60564



JASON PESOLA
Cell: 630-486-7321
jason@thepesolagroup.com

INTEGRA
COMMERCIAL
REAL ESTATE

1960 Springbrook Square Dr #100
Naperville, IL 60564

OSWEGO ILLINOIS DEMOGRAPHICS

5 S. MADISON ST. OSWEGO, IL

<https://www.census.gov/quickfacts/fact/table/oswegovillageillinois/PST045222>

2022 EST. POPULATION

35,850

MEDIAN PROPERTY VALUE

\$239,800

2018-2022 HOUSEHOLDS

12,203

TOTAL RETAIL SALES

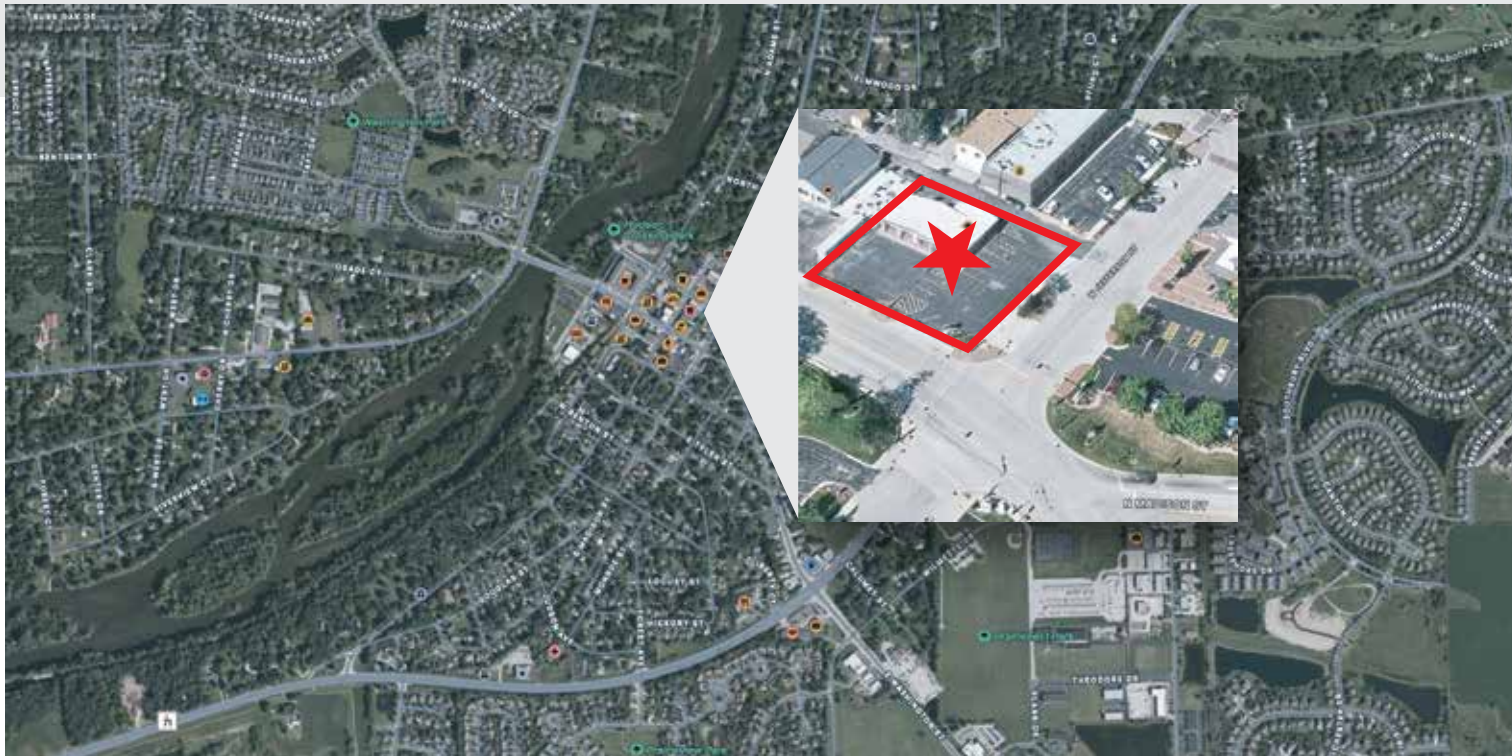
\$14,904

PER CAPITA

MEDIAN HOUSEHOLD INCOME

\$112,109

2018 - 2022



JASON PESOLA

Cell: 630-486-7321

jason@thepesolagroup.com

INTEGRA
COMMERCIAL
REAL ESTATE

1960 Springbrook Square Dr #100
Naperville, IL 60564