

Economic Development

Orchard Road Commercial Corridor

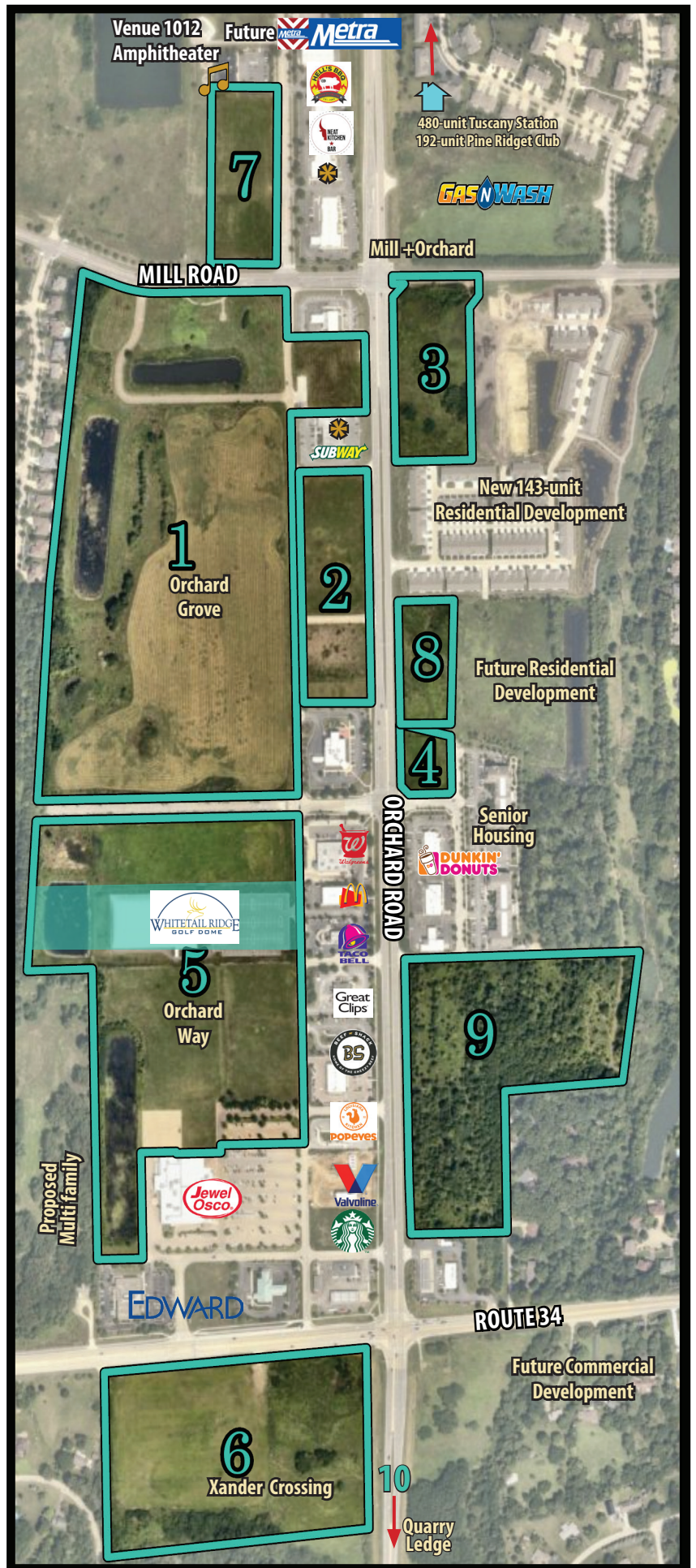
Why Choose Oswego?

Located on the west end of one of Chicagoland's fastest-growing communities, Orchard Road is the up-and-coming commercial corridor. The corridor is anchored by Jewel Osco and the Whitetail Ridge Golf Dome with several new projects under construction. Get in now before the arrival of proposed commuter rail service drives prices. For more information, visit oswegoil.org/orchard or scan the QR code above.

Opportunities

- 1 Orchard Grove**
45 acres
- 2 Orchard Grove Outlot**
4 acres
- 3 Redwood Outlot**
5 acres
- 4 Orchard Woods**
1.2 acres
- 5 Orchard Way**
25 acres
- 6 Xander Crossing**
18 acres
- 7 Oswego Junction Lots**
6.5 acres
- 8 Redwood Outlot II**
3.2 acres
- 9 Walnut Creek**
16.5 acres
- 10 Quarry Ledge**
194.9 acres

 Commercial vacancies available



Available For New Development



1 Orchard Grove 45 acres



6 Xander Crossing 18 acres



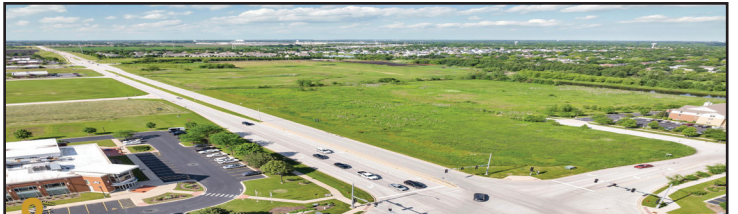
2 Orchard Grove Outlot 4 acres



7 Oswego Junction Lots 6.5 acres



3 Redwood Outlot 5 acres



8 Redwood Outlot II 3.2 acres



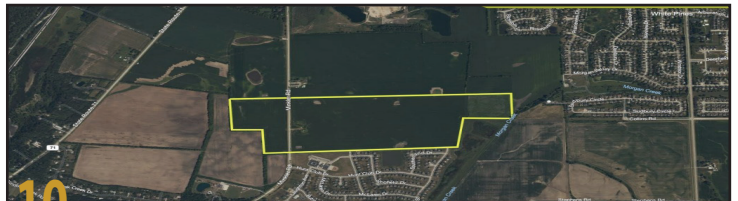
4 Orchard Woods 1.2 acres



9 Walnut Creek 16.5 acres



5 Orchard Way 25 acres



10 Quarry Ledge 194.9 acres

15K
vehicles per day

\$114K
median house-
hold income

>270K
people within
15 minutes

CONTACT US

Kevin R. Leighty
Economic Development Director
630.551.2334
KLeighty@oswegoil.org
oswegoil.org/business

