

F.A.U. RTE.	SECTION	COUNTY	TOTAL SHEETS	SHEET NO.
		KENDALL	6	1
		ILLINOIS	CONTRACT NO.	

**INDEX OF SHEETS**

- 1 COVER SHEET
- 2 GENERAL NOTES
- 3 SUMMARY OF QUANTITIES
- 4-6 SIDEWALK PLANS

**LIST OF HIGHWAY STANDARDS**

- 000001-08 STANDARD SYMBOLS, ABBREVIATIONS AND PATTERNS
- 701001-02 OFF-ROAD OPERATIONS, 2L, 2W, MORE THAN 15' (4.5 M) AWAY
- 701006-05 OFF-ROAD OPERATIONS, 2L, 2W, 15' (4.5 M) TO 24" (600 MM) FROM PAVEMENT EDGE
- 701301-04 LANE CLOSURE, 2L, 2W, SHORT TERM OPERATIONS
- 701801-06 SIDEWALK, CORNER OR CROSSWALK CLOSURE
- 701901-08 TRAFFIC CONTROL DEVICES

**TRAFFIC DATA**

**DESIGN DESIGNATIONS:**

IL ROUTE 31 = OTHER PRINCIPAL ARTERIAL

**ADT:**

IL ROUTE 31 = 9,500 (2021)

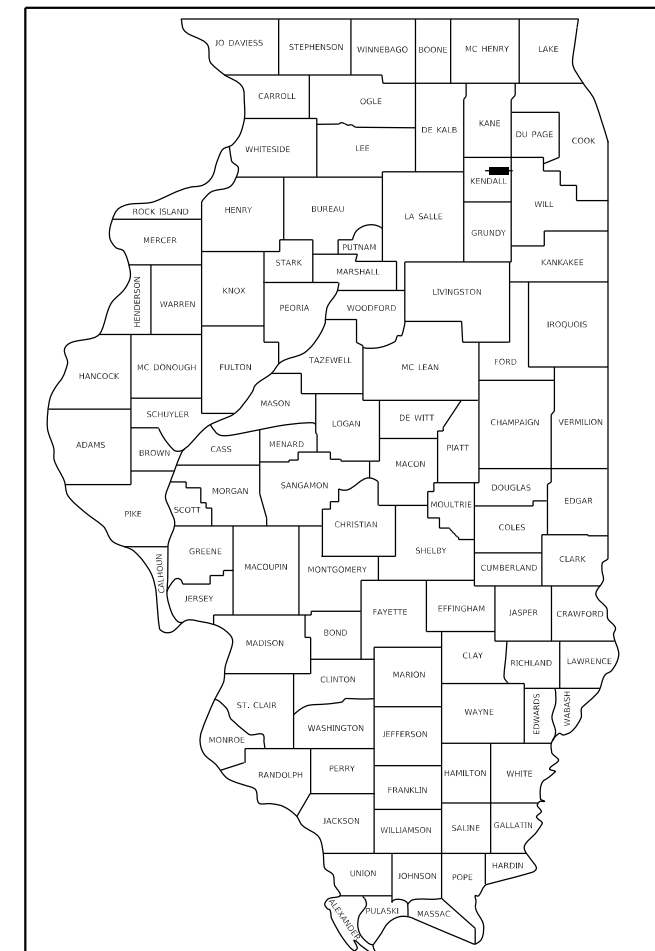
**POSTED SPEED:**

IL ROUTE 31 = 45 MPH

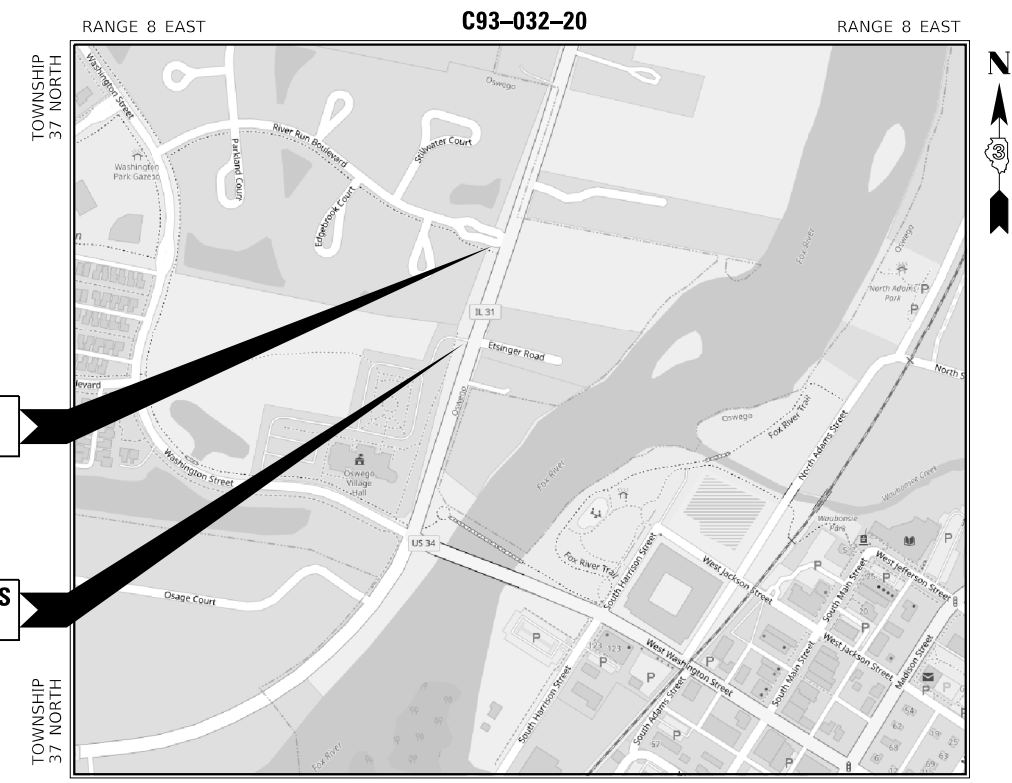
**VILLAGE OF OSWEGO**

**PLANS FOR PROPOSED SIDEWALK CONNECTION**

**PARKERS MILL TO RIVER RUN BOULEVARD**



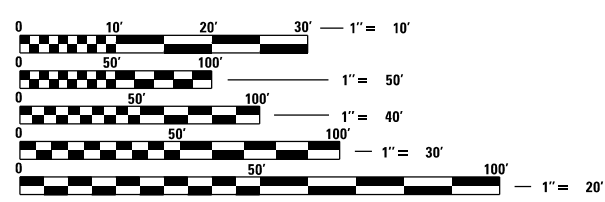
LOCATION OF SECTION INDICATED THIS: - [Black Box] -



LOCATION MAP (NOT TO SCALE)

**CONTRACT NO.**

J.U.L.I.E.  
JOINT UTILITY LOCATING INFORMATION FOR EXCAVATION  
1-800-892-0123 OR 811



FULL SIZE PLANS HAVE BEEN PREPARED USING STANDARD ENGINEERING SCALES. REDUCED SIZED PLANS WILL NOT CONFORM TO STANDARD SCALES. IN MAKING MEASUREMENTS ON REDUCED PLANS, THE ABOVE SCALES MAY BE USED.



2363 SEQUOIA DRIVE, SUITE 101 | AURORA, ILLINOIS 60506  
Phone: 630.553.7560 | Toll Free: 800.728.7805 | Fax: 630.553.7646 | HRGreen.com  
ILLINOIS PROFESSIONAL DESIGN FIRM #184-001322

**AGENCY RESPONSIBLE FOR LETTING**

APPROVED \_\_\_\_\_ 20 \_\_\_\_\_

VILLAGE OF OSWEGO  
DEPARTMENT OF PUBLIC WORKS

*Jason M. Roitburd*  
JASON M. ROITBURD, P.E.  
NO. 062-065592  
EXPIRES: 11/30/2025  
HR GREEN, INC.



**GENERAL NOTES**

**PAVING**

THE HMA SURFACE OF ALL MAILBOX TURNOUTS, PRIVATE ENTRANCES, COMMERCIAL ENTRANCES, AND SIDE ROADS SHALL BE MADE NEATLY, IN A WORKMANLIKE MANNER, AND SHALL ACCURATELY CONFORM TO THE SHAPES AND DIMENSIONS SHOWN ON THE PLAN DETAILS. IF REQUIRED BY THE ENGINEER, THE CONTRACTOR SHALL BE REQUIRED TO SAW CUT THE HMA SURFACE TO CONFORM TO THE SHAPES AND DIMENSIONS SHOWN ON THE PLAN DETAILS. THIS WORK SHALL BE INCLUDED IN THE COST OF THE HMA SURFACE.

THE ENGINEER WILL BE THE SOLE JUDGE CONCERNING CURING TIME FOR THE VARIOUS HMA LIFTS.

**DRAINAGE**

THE CONTRACTOR SHALL ENSURE THAT POSITIVE DRAINAGE IS MAINTAINED AT ALL TIMES DURING AND AFTER THE CONSTRUCTION. THIS WORK SHALL BE CONSIDERED AS INCLUDED IN THE CONTRACT UNIT PRICE OF THE APPLICABLE DRAINAGE ITEMS.

WHEN EXISTING DRAINAGE FACILITIES ARE DISTURBED, THE CONTRACTOR SHALL PROVIDE AND MAINTAIN TEMPORARY OUTLETS AND CONNECTIONS FOR ALL PRIVATE OR PUBLIC DRAINS, SEWERS, OR CATCH BASINS. CONTRACTOR SHALL PROVIDE FACILITIES TO TAKE IN ALL STORM WATER WHICH WILL BE RECEIVED BY THESE DRAINS AND SEWERS AND DISCHARGE SAME. CONTRACTOR SHALL PROVIDE AND MAINTAIN AN EFFICIENT PUMPING PLANT, IF NECESSARY, AND A TEMPORARY OUTLET SHALL BE PREPARED AT ALL TIMES TO DISPOSE OF THE WATER RECEIVED FROM THESE TEMPORARY CONNECTIONS UNTIL SUCH TIME AS THE PERMANENT ROADSIDE DRAINAGE SYSTEM IS BUILT AND IN SERVICE. THIS WORK WILL NOT BE PAID FOR SEPARATELY, BUT SHALL BE CONSIDERED AS INCLUDED IN THE UNIT BID PRICES OF THE CONTRACT.

THE WORK REQUIRED TO CONNECT ANY SEWER TO AN EXISTING DRAINAGE STRUCTURE OR PIPE WILL NOT BE PAID FOR SEPARATELY, BUT SHALL BE CONSIDERED AS INCLUDED IN THE COST OF THE PROPOSED STORM SEWER ITEMS.

ANY LOOSE MATERIAL DEPOSITED IN THE FLOWLINE OF DRAINAGE STRUCTURES, WHICH OBSTRUCTS THE NATURAL FLOW OF WATER SHALL BE REMOVED AT THE CLOSE OF EACH WORKING DAY. PRIOR TO ACCEPTANCE OF THE IMPROVEMENT, ALL DRAINAGE STRUCTURES SHALL BE FREE OF DIRT AND DEBRIS. THIS WORK WILL NOT BE PAID FOR SEPARATELY, BUT SHALL BE CONSIDERED AS INCLUDED IN THE UNIT BID PRICES OF THE CONTRACT.

FRAME ELEVATIONS GIVEN ON THE PLANS ARE ONLY TO ASSIST THE CONTRACTOR IN DETERMINING THE APPROXIMATE OVERALL HEIGHT OF THE STRUCTURE. FRAMES ON ALL STRUCTURES WILL BE ADJUSTED TO THE FINAL ELEVATION AND CROSS SLOPE OF THE AREA IN WHICH THEY ARE LOCATED.

THE PROPOSED DRAINAGE STRUCTURES AND PIPES SHALL BE PROTECTED FROM SEDIMENT IMMEDIATELY AFTER THEY ARE CONSTRUCTED UNTIL THE SURFACES THAT DRAIN TO THEM ARE FULLY PAVED OR VEGETATED.

**STAKING**

THE CONTRACTOR SHALL PROTECT AND CAREFULLY PRESERVE ALL SECTION OR SUBSECTION MONUMENTS, PROPERTY CORNERS, AND REFERENCE MARKERS UNTIL THE OWNER, HIS AGENT, OR AN AUTHORIZED SURVEYOR HAS WITNESSED OR OTHERWISE REFERENCED THEIR LOCATIONS.

ALL RADII FOR PROPOSED CURB AND GUTTER ARE TO THE EDGE OF PAVEMENT, UNLESS OTHERWISE NOTED. CURB AND GUTTER ELEVATIONS SHOWN ALONG RETURNS AND AT POINTS OF CURVATURE, ETC. ARE TO THE EDGE OF PAVEMENT UNLESS OTHERWISE NOTED.

EXCEPT AS NOTED ON THE PLANS, PAVEMENT GRADES SHOWN ARE AT THE TOP OF PAVEMENT SURFACES.

OFFSET LOCATIONS GIVEN IN THE PLANS FOR STRUCTURES, EDGE OF PAVEMENT, ETC. ARE FROM THE ROADWAY CENTERLINE.

UNLESS OTHERWISE NOTED, THE OFFSETS FOR DRAINAGE STRUCTURES WITHIN THE CURB ARE MEASURED TO THE EDGE OF PAVEMENT. THE OFFSETS FOR ALL OTHER DRAINAGE STRUCTURES ARE MEASURED TO THE CENTER OF THE STRUCTURE.

ALL ELEVATIONS ARE ON NAVD 88 DATUM.

**MISCELLANEOUS**

IT IS THE CONTRACTOR'S RESPONSIBILITY TO ASCERTAIN EXISTING FIELD CONDITIONS BEFORE BIDDING ON THE CONTRACT.

WHERE NEW WORK MEETS EXISTING FEATURES TO REMAIN, THE CONTRACTOR SHALL FIELD CHECK ALL DIMENSIONS AND ELEVATIONS PRIOR TO PROCEEDING WITH CONSTRUCTION AND NOTIFY THE ENGINEER IMMEDIATELY OF ANY DISCREPANCIES.

SEEDING WILL NOT BE PERMITTED AT ANY TIME WHEN THE GROUND IS FROZEN, WET, OR IN AN UNTILLABLE CONDITION. LOCATIONS TO BE SEEDED WILL BE DETERMINED BY THE ENGINEER.

ANY REFERENCE TO A STANDARD THROUGHOUT THE PLANS OR SPECIAL PROVISIONS SHALL BE INTERPRETED TO MEAN THE EDITION AS INDICATED BY THE SUBNUMBER SHOWN IN THE LIST OF STANDARDS INCLUDED IN THESE PLANS.

SAW CUTTING WILL BE REQUIRED FOR ALL REMOVAL ITEMS LISTED IN SECTION 440 OF THE STANDARD SPECIFICATIONS, SHOWN IN THE PLANS, AND AS DIRECTED BY THE ENGINEER. THE COST OF SAW CUTTING WILL BE INCLUDED IN CONTRACT UNIT BID PRICES FOR THE ITEMS BEING REMOVED.

ADDITIONAL PAVEMENT REMOVAL WILL BE REQUIRED IN AREAS WHERE THE PROPOSED PAVEMENT WIDENING IS LESS THAN 2' IN ORDER TO OBTAIN THE REQUIRED COMPACTION WITHIN THE PROPOSED WIDENING AREA. ADEQUATE QUANTITIES HAVE BEEN PROVIDED.

THE CONTRACTOR WILL BE REQUIRED TO COMPLY WITH ALL STATE REGULATIONS REGARDING AIR, WATER, AND NOISE POLLUTION. THE CONTRACTOR IS PROHIBITED FROM BURNING ANY MATERIAL WITHIN OR ADJACENT TO THE IMPROVEMENT.

THE FOLLOWING RATES OF APPLICATION HAVE BEEN USED IN CALCULATING PLAN QUANTITIES:

GRANULAR MATERIALS	2.05	TONS / CU YD
BITUMINOUS MAT (PRIME COAT)	0.05	LBS / SQ FT (MILLED HMA/AGED HMA)
	0.025	LBS / SQ FT (HMA LIFTS)
	0.25	LBS / SQ FT (AGGREGATE)
HMA RESURFACING	112	LBS / SQ YD / IN
SHORT TERM PAVEMENT MARKING	10	FT / 100 FT OF APPLICATION

**UTILITIES**

THE CONTRACTOR SHALL BE RESPONSIBLE FOR CONTACTING THE OWNERS OF ALL UTILITIES PRIOR TO CONSTRUCTION TO DETERMINE THE LOCATION OF ALL UTILITY EQUIPMENT. THE CONTRACTOR SHALL COOPERATE WITH ALL UTILITY OWNERS IN ACCORDANCE WITH THE STANDARD SPECIFICATIONS IF UTILITY RELOCATION, ADJUSTMENT, OR PROTECTION IS NECESSARY.

ABANDONED UNDERGROUND UTILITIES THAT CONFLICT WITH CONSTRUCTION SHALL BE DISPOSED OF OUTSIDE THE LIMITS OF THE RIGHT OF WAY ACCORDING TO ARTICLE 202.03 OF THE STANDARD SPECIFICATIONS AND AS DIRECTED BY THE ENGINEER. THIS WORK WILL NOT BE PAID FOR SEPARATELY, BUT SHALL BE CONSIDERED AS INCLUDED IN THE COST OF EARTH EXCAVATION.

THE LOCATION OF EXISTING DRAINAGE STRUCTURES, STORM SEWERS, WATER MAINS, SANITARY SEWERS, AND ANY OTHER PUBLIC OR PRIVATE UTILITIES AS SHOWN ON THE PLANS IS APPROXIMATE AND THEIR EXACT LOCATION IS TO BE DETERMINED IN THE FIELD BY THE CONTRACTOR. THIS WORK SHALL BE CONSIDERED AS INCLUDED IN THE UNIT BID PRICES OF THE CONTRACT, AND NO ADDITIONAL COMPENSATION WILL BE ALLOWED.

THE CONTRACTOR SHALL BE RESPONSIBLE FOR THE PROTECTION OF ALL UNDERGROUND AND SURFACE UTILITIES EVEN THOUGH THEY MIGHT NOT BE SHOWN ON THE PLANS. ANY UTILITY PROPERTY DAMAGED DURING CONSTRUCTION SHALL BE REPAIRED OR REPLACED TO THE SATISFACTION OF THE OWNER AT THE CONTRACTOR'S EXPENSE.

**HMA MIXTURE REQUIREMENT TABLE**

LOCATIONS:	ENTIRE PROJECT	ENTIRE PROJECT
MIXTURE USE(S):	HMA BINDER ROADWAY	HMA SURFACE ROADWAY
BINDER GRADE (PG):	PG64-22	PG64-22
DESIGN AIR VOIDS:	4.0% @ N50	4.0% @ N50
MIXTURE COMPOSITION: (MIXTURE GRADATION)	IL 19.0	IL 9.5
FRICTION AGGREGATE:		MIXTURE D
MIXTURE WEIGHT:	112.0 LB/SY/IN	112.0 LB/SY/IN
QUALITY MANAGEMENT PROGRAM:	QCQA	QCQA
SUBLOT SIZE:	N/A	N/A
DENSITY TEST METHOD:	CORES/NUCLEAR	CORES/NUCLEAR
MATERIAL TRANSFER DEVICE (REQUIRED)	NO	NO

HRG PROJECT NO: 200095.24  
 HRG PROJ CONTACT:  
 FILE NAME: 200095.24\_genc01.dgn  
 PEN TABLE: 1001tbl.tbl



USER NAME = jroibu	DESIGNED - JMR	REVISED -
	DRAWN - AJM	REVISED -
PLOT SCALE = 100.0000 ' / in.	CHECKED -	REVISED -
PLOT DATE = 6/20/2023	DATE - 9/8/2022	REVISED -

**VILLAGE OF OSWEGO  
DEPARTMENT OF PUBLIC WORKS**

**GENERAL NOTES**

SCALE: N.T.S. SHEET 1 OF 1 SHEETS STA. TO STA.

F.A. RTE.	SECTION	COUNTY	TOTAL SHEETS	SHEET NO.
		KENDALL	6	2
CONTRACT NO.				
ILLINOIS		FED. AID PROJECT		

CODE NUMBER	PAY ITEM	UNIT	TOTAL QUANTITY
20200100	EARTH EXCAVATION	CU YD	85
21101615	TOPSOIL FURNISH AND PLACE, 4"	SQ YD	161
25000210	SEEDING, CLASS 2A	ACRE	0.15
25000400	NITROGEN FERTILIZER NUTRIENT	POUND	14
25000500	PHOSPHORUS FERTILIZER NUTRIENT	POUND	14
25000600	POTASSIUM FERTILIZER NUTRIENT	POUND	14
25100630	EROSION CONTROL BLANKET	SQ YD	726
28000400	PERIMETER EROSION BARRIER	FOOT	350
35101600	AGGREGATE BASE COURSE, TYPE B 4"	SQ YD	200
40600290	BITUMINOUS MATERIALS (TACK COAT)	POUND	400
40600982	HOT-MIX ASPHALT SURFACE REMOVAL - BUTT JOINT	SQ YD	123
40600990	TEMPORARY RAMP	SQ YD	123
40603080	HOT-MIX ASPHALT BINDER COURSE, IL-19.0, N50	TON	31
40604060	HOT-MIX ASPHALT SURFACE COURSE, IL-9.5, MIX "D", N50	TON	38
42400200	PORTLAND CEMENT CONCRETE SIDEWALK 5 INCH	SQ FT	1,794
42400800	DETECTABLE WARNINGS	SQ FT	20
44000160	HOT-MIX ASPHALT SURFACE REMOVAL, 2 3/4"	SQ YD	444
44000500	COMBINATION CURB AND GUTTER REMOVAL	FOOT	218
44000600	SIDEWALK REMOVAL	SQ FT	75
60255500	MANHOLES TO BE ADJUSTED	EACH	1
60260100	INLETS TO BE ADJUSTED	EACH	2
60603800	COMBINATION CONCRETE CURB AND GUTTER, TYPE B-6.12	FOOT	63
60605000	COMBINATION CONCRETE CURB AND GUTTER, TYPE B-6.24	FOOT	124
60605500	COMBINATION CONCRETE CURB AND GUTTER, TYPE B-6.24 (VARIABLE WIDTH GUTTER FLAG)	FOOT	32
78009000	MODIFIED URETHANE PAVEMENT MARKING - LETTERS AND SYMBOLS	SQ FT	24
78009004	MODIFIED URETHANE PAVEMENT MARKING - LINE 4"	FOOT	162
78009006	MODIFIED URETHANE PAVEMENT MARKING - LINE 6"	FOOT	72

CODE NUMBER	PAY ITEM	UNIT	TOTAL QUANTITY
78009008	MODIFIED URETHANE PAVEMENT MARKING - LINE 8"	FOOT	71
78009012	MODIFIED URETHANE PAVEMENT MARKING - LINE 12"	FOOT	72
78009024	MODIFIED URETHANE PAVEMENT MARKING - LINE 24"	FOOT	36
78300202	PAVEMENT MARKING REMOVAL - WATER BLASTING	SQ FT	305
X3550015	HOT-MIX ASPHALT BASE COURSE, (VARIABLE DEPTH)	TON	57
Z0030850	TEMPORARY INFORMATION SIGNING	SQ FT	200

LOCATION	EARTH EXCAVATION (CU YD)	EARTH EXCAVATION ADJUSTED FOR SHRINKAGE (25%) (CU YD)	EMBANKMENT (CU YD)	EARTH BALANCE WASTE (+) OR SHORTAGE (-) (CU YD)
IL 31 SIDEWALK EXTENSION	85.0	63.8	10.5	53.3
<b>TOTAL</b>	<b>85.0</b>	<b>63.8</b>	<b>10.5</b>	<b>53.3</b>

- NOTES:  
1. ALL MATERIAL TO BE UTILIZED AS EMBANKMENT AND TOPSOIL PLACMENT ON THIS PROJECT SHALL CONFORM TO THE APPLICABLE SECTIONS OF THE STANDARD SPECIFICATIONS AND THE SPECIAL PROVISIONS INCLUDED IN THIS CONTRACT AT THE TIME OF LETTING.  
2. ANY TOPSOIL EXCAVATED SHALL BE UTILIZED IN THE EMBANKMENT OR TOPSOIL PLACEMENT TO REDUCE THE VOLUME OF EMBANKMENT OR FURNISHED TOPSOIL VOLUME NEEDED. HOWEVER, THE USE OF SUCH MATERIAL SHALL BE IN ACCORDANCE WITH NOTE # 1 ABOVE. THE EARTHWORK SCHEDULE AND QUANTITIES HAVE NOT BEEN ADJUSTED TO ACCOUNT FOR EXCESS MATERIALS TO BE APPLIED TO TOPSOIL QUANTITY.

HRG PROJECT NO: 200095.24  
HRG PROJ CONTACT:  
FILE NAME: 200095.24\_ssp02.dgn  
PEN TABLE: 10/10/2022.tbl



USER NAME = jroibu	DESIGNED - JMR	REVISED -
	DRAWN - AJM	REVISED -
PLOT SCALE = 100.0000' / in.	CHECKED -	REVISED -
PLOT DATE = 6/20/2023	DATE - 9/8/2022	REVISED -

**VILLAGE OF OSWEGO  
DEPARTMENT OF PUBLIC WORKS**

**SUMMARY OF QUANTITIES  
AND SCHEDULE OF QUANTITIES**

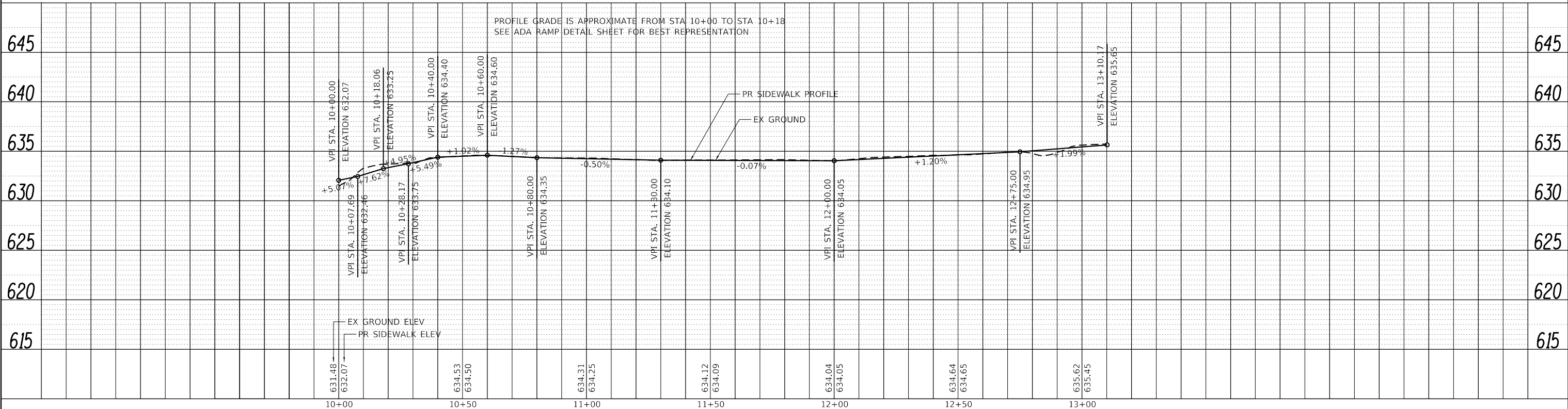
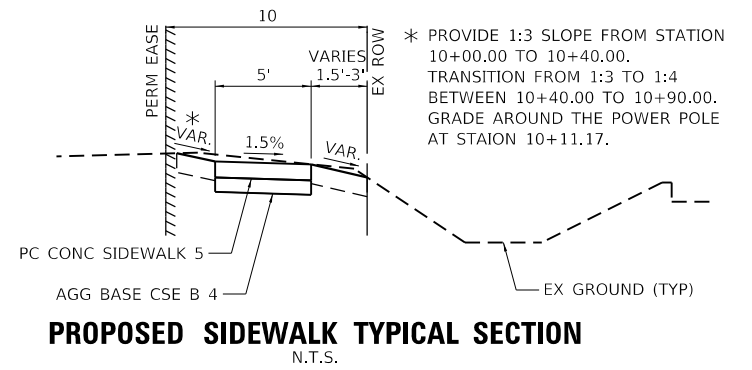
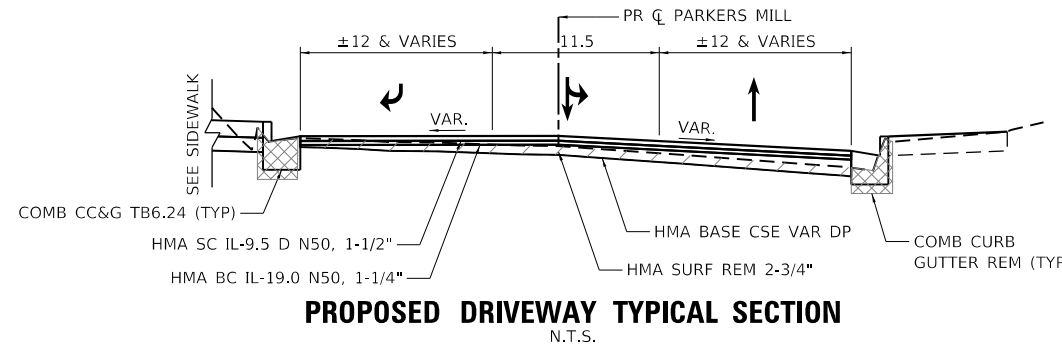
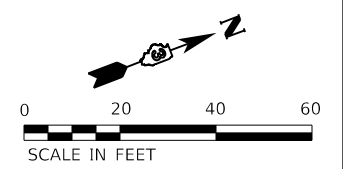
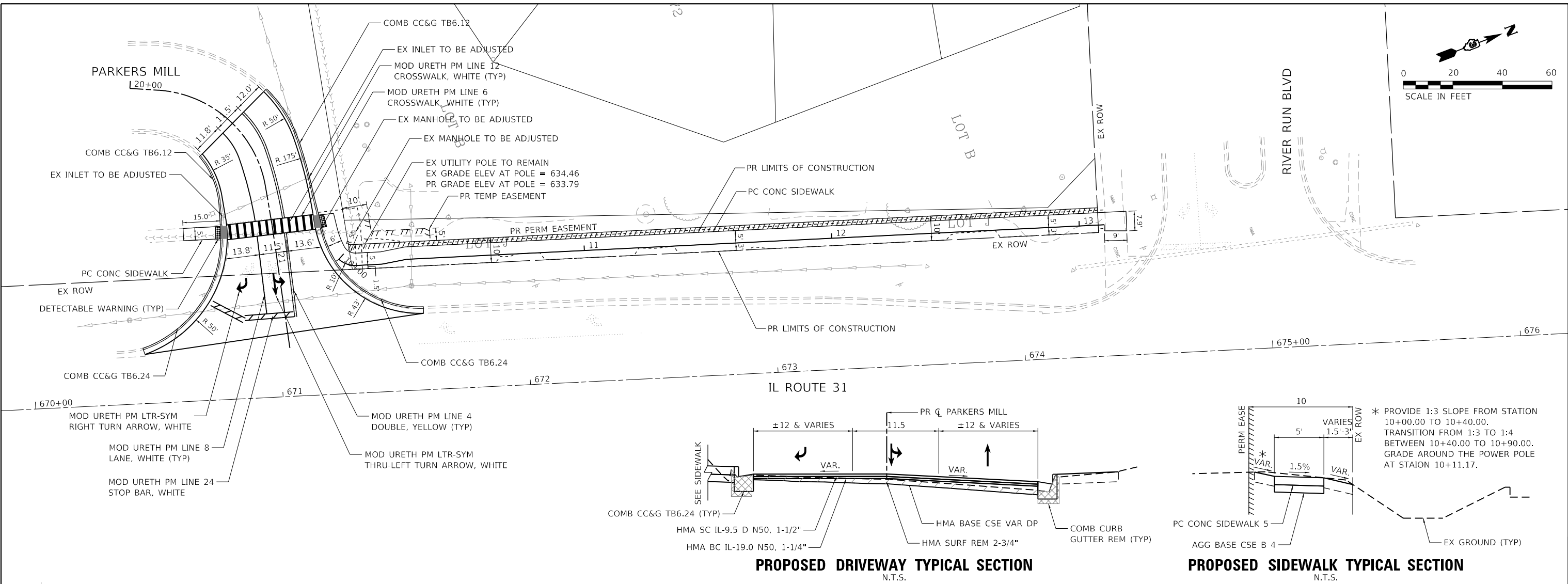
SCALE: N.T.S. SHEET 1 OF 1 SHEETS STA. TO STA.

F.A. RTE.	SECTION	COUNTY	TOTAL SHEETS	SHEET NO.
		KENDALL	6	3
CONTRACT NO.				
ILLINOIS FED. AID PROJECT				

PLAN	SURVEYED	DATE
NOTE BOOK	ALIGNED	
NO.	CHECKED	
	FILE NAME	
	BY	

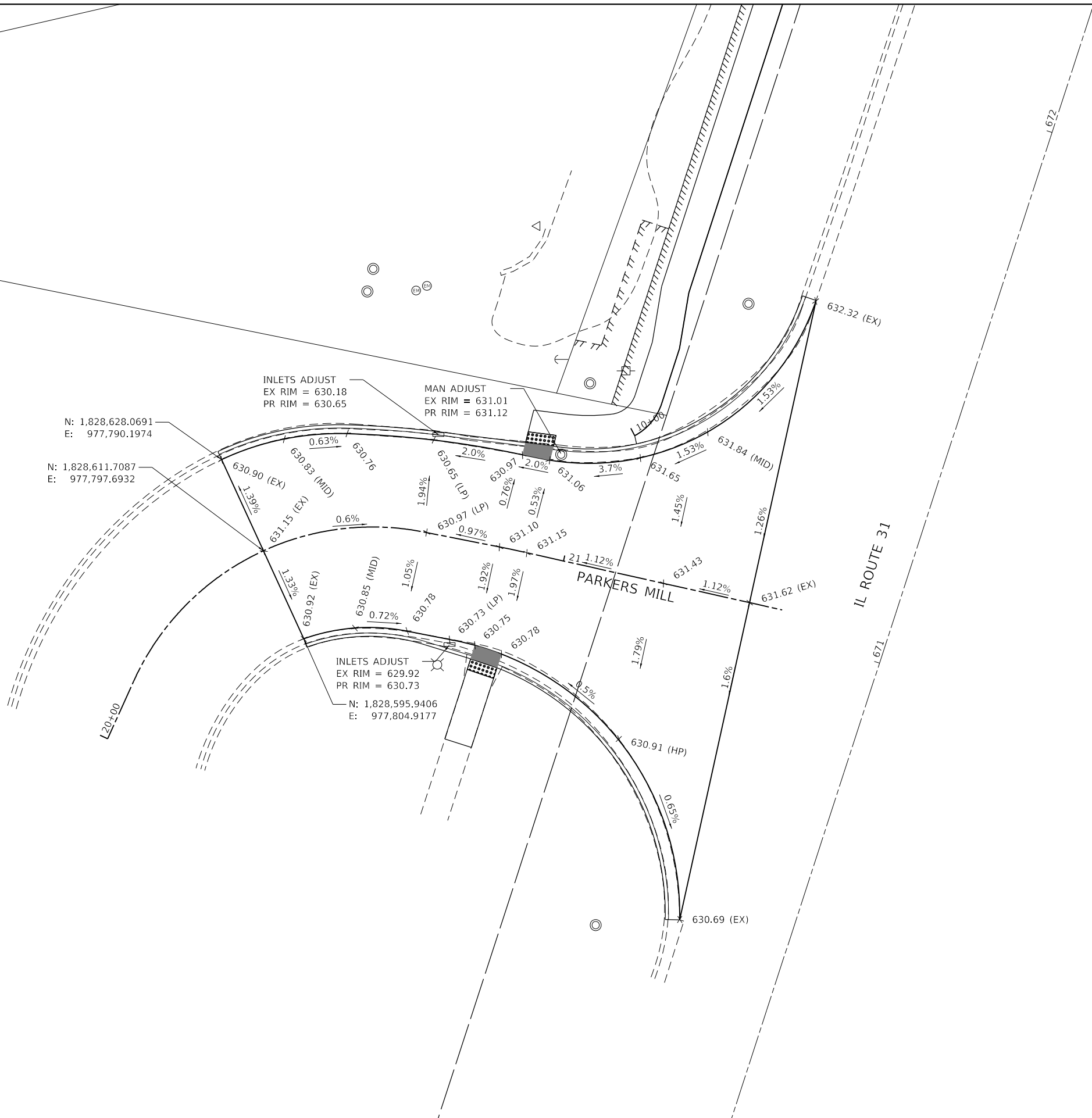
PROFILE	SURVEYED	DATE
NOTE BOOK	GRADES CHECKED	
NO.	STRUCTURE	
	NOT AT THIS OFFICE	

HRG PROJECT NO.: 200055.24  
 HRG PROJ. CONTACT:  
 FILE NAME: 200055.24\_PlanProfile.dwg  
 PEN TABLE: pwp.tbl



	USER NAME = jroibu DESIGNED - JMR DRAWN - AJM CHECKED - PLOT DATE = 6/20/2023	REVISED - REVISED - REVISED - REVISED -	<b>VILLAGE OF OSWEGO</b> <b>DEPARTMENT OF PUBLIC WORKS</b>	<b>PLAN AND PROFILE</b> <b>IL 31 SIDEWALK</b>	F.A. RTE.	SECTION	COUNTY	TOTAL SHEETS	SHEET NO.
	SCALE: 1" = 20' SHEET 1 OF 1 SHEETS STA. TO STA.	KENDALL			6	4			

ILLINOIS FED. AID PROJECT



N: 1,828,628.0691  
E: 977,790.1974

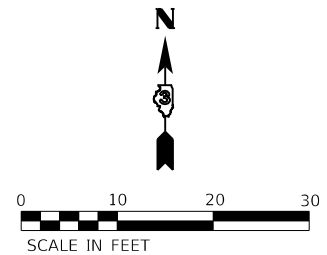
N: 1,828,611.7087  
E: 977,797.6932

INLETS ADJUST  
EX RIM = 630.18  
PR RIM = 630.65

MAN ADJUST  
EX RIM = 631.01  
PR RIM = 631.12

INLETS ADJUST  
EX RIM = 629.92  
PR RIM = 630.73

N: 1,828,595.9406  
E: 977,804.9177



HRG PROJECT NO: 200055.24  
 HRG PROJ CONTACT:  
 FILE NAME: 200055.24\_inps.dgn  
 PEN TABLE: pwp.tbl

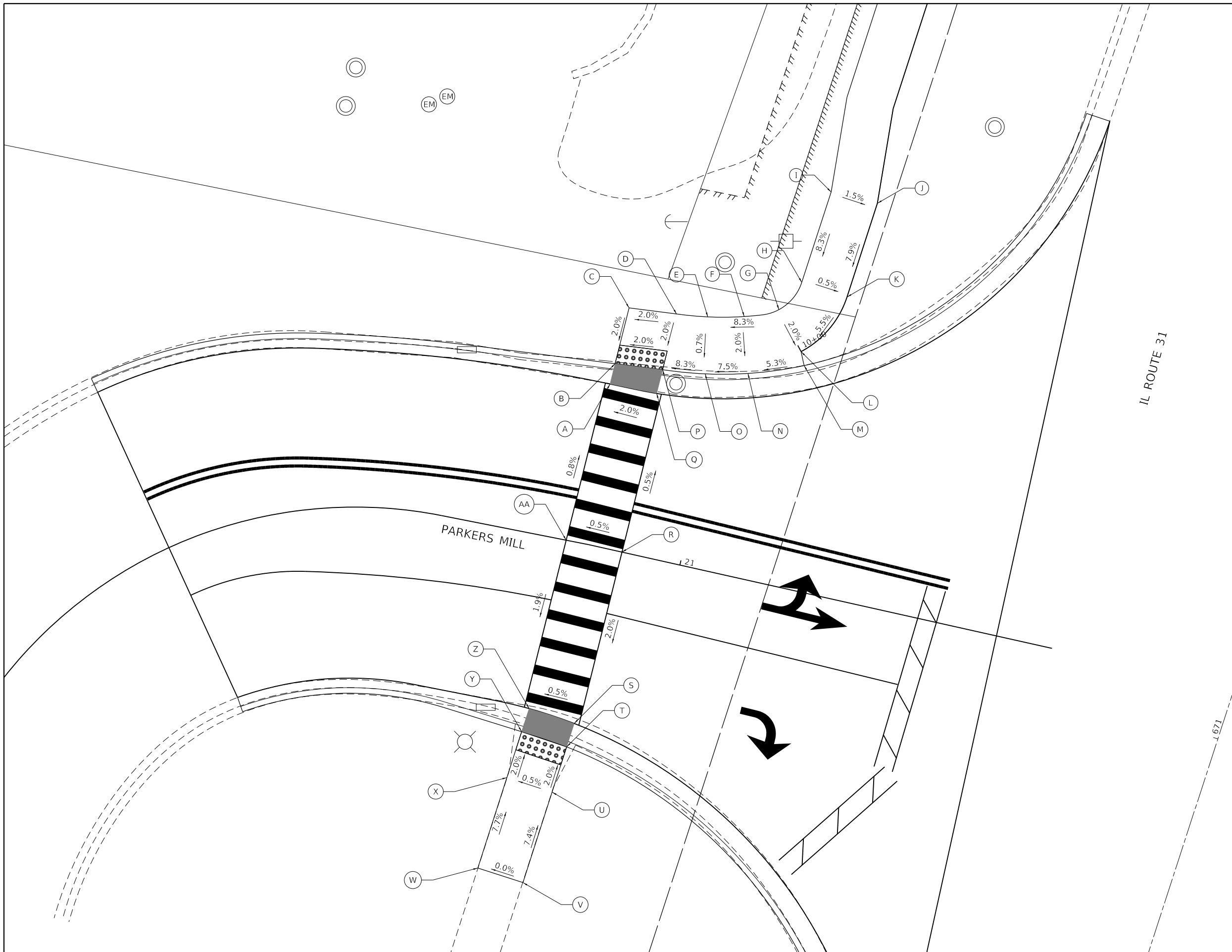


USER NAME = jroibu	DESIGNED - JMR	REVISED -
	DRAWN - AJM	REVISED -
PLOT SCALE = 20.0000' / in.	CHECKED -	REVISED -
PLOT DATE = 6/20/2023	DATE - 9/8/2022	REVISED -

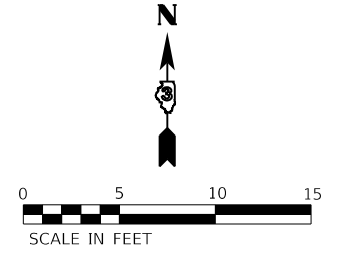
**VILLAGE OF OSWEGO  
DEPARTMENT OF PUBLIC WORKS**

<b>INTERSECTION PAVEMENT ELEVATION PLAN</b>			
<b>IL 31 SIDEWALK</b>			
SCALE: 1" = 10'	SHEET 1 OF 1 SHEETS	STA. TO STA.	

F.A. RTE.	SECTION	COUNTY	TOTAL SHEETS	SHEET NO.
		KENDALL	6	5
CONTRACT NO.				
ILLINOIS FED. AID PROJECT				



	STATION	OFFSET	ELEVATION
A	671+15.74	72.38' LT	630.97
B	671+17.95	72.54' LT	630.92
C	671+23.98	72.96' LT	631.04
D	671+24.92	68.01' LT	631.14
E	671+25.64	64.78' LT	631.43
F	671+26.86	61.15' LT	631.85
G	671+28.68	57.61' LT	632.17
H	671+32.15	56.50' LT	632.48
I	671+42.15	56.60' LT	633.32
J	671+42.53	51.50' LT	633.25
K	671+32.15	51.50' LT	632.46
L	671+25.20	54.31' LT	632.07
M	671+23.91	53.56' LT	632.04
N	671+21.29	58.92' LT	631.73
O	671+19.86	63.19' LT	631.39
P	671+18.89	67.59' LT	631.02
Q	671+16.32	67.41' LT	631.06
R	670+99.31	65.73' LT	631.15
S	670+80.61	64.93' LT	630.78
T	670+78.02	64.93' LT	630.72
U	670+71.01	64.91' LT	630.82
V	670+66.01	64.89' LT	631.56 (EX)
W	670+66.00	69.89' LT	631.56 (EX)
X	670+71.00	69.91' LT	630.79
Y	670+78.07	69.93' LT	630.69
Z	670+80.63	69.93' LT	630.75
AA	670+98.69	71.70' LT	631.10



HRG PROJECT NO: 200095.24  
 HRG PROJ CONTACT:  
 FILE NAME: 200095.24.dwg  
 PEN TABLE: AutoCAD.tbl


**HRGreen.com**  
 Illinois Professional Design Firm  
 #184-001322

USER NAME = jroibu	DESIGNED - JMR	REVISED -
PLOT SCALE = 10.0000' / in.	DRAWN - AJM	REVISED -
PLOT DATE = 6/20/2023	CHECKED -	REVISED -
	DATE - 9/8/2022	REVISED -

**VILLAGE OF OSWEGO**  
**DEPARTMENT OF PUBLIC WORKS**

**ADA RAMP DETAILS**  
**IL 31 SIDEWALK**

SCALE: 1" = 5'    SHEET 1 OF 1 SHEETS    STA.    TO STA.

F.A. RTE.	SECTION	COUNTY	TOTAL SHEETS	SHEET NO.
		KENDALL	6	6
CONTRACT NO.				
ILLINOIS FED. AID PROJECT				