

Summer 2022

Oswego News

The official newsletter of the Village of Oswego, Illinois



Referendum
asks to shift cost
of new water
to future residents

Voting information p.2

Drink up!

2021 Annual Water
Quality Report inside.
See pages 11-14.

**Country Bash kicks off
2022 season at Venue 1012 p.4**

OSWEGO VILLAGE BOARD

- TROY PARLIER *PRESIDENT*
- TINA TOUCHETTE *CLERK*
- TOM GUIST
- KIT KUHRT
- JAMES MARTER II
- TERRY OLSON
- JENNIFER JONES SINNOTT
- BRIAN THOMAS

ADMINISTRATION

- DANIEL DI SANTO *VILLAGE ADMINISTRATOR*
- JEFF BURGNER *POLICE CHIEF*
- CHRISTINA BURNS *DEPUTY VILLAGE ADMINISTRATOR*
- KEVIN LEIGHTY *ECONOMIC DEVELOPMENT DIRECTOR*
- JAY HOOVER *BUILDING & PERMITS MANAGER*
- MARK HORTON *FINANCE DIRECTOR*
- JENNIFER HUGHES *PUBLIC WORKS DIRECTOR*
- ROD ZENNER *DEVELOPMENT SERVICES DIRECTOR*



OSWEGO NEWS

Oswego News is the official newsletter of the Village of Oswego, published quarterly and mailed to more than 14,000 Oswego postal customers. Please direct comments, suggestions and questions, including advertising to:

BRIDGET BITTMAN
COMMUNICATIONS MANAGER
VILLAGE OF OSWEGO
100 PARKERS MILL
OSWEGO, IL 60543

630-551-2392
BBITTMAN@OSWEGOIL.ORG

DEPARTMENTS

- ADMINISTRATION** 630-551-2360
- BUILDING & ZONING** 630-554-2310
- DEVELOPMENT SERVICES** 630-554-3622
- ECONOMIC DEVELOPMENT** 630-551-2335
- FINANCE** 630-554-0864
- POLICE (NON-EMERGENCY)** 630-551-7300
- PUBLIC WORKS** 630-554-3242
- VILLAGE CLERK** 630-554-3259
- UTILITY/WATER BILLING** 630-554-2282

Plenty to enjoy this summer in Oswego



Hello Oswego!

It's great to see the temperatures rise and everyone out having fun. The town is filled with families walking, kids playing in the park, joggers and bikers. People are enjoying the outdoors hiking, fishing, golfing, even mushroom hunting! I couldn't say it any better than Kenny Chesney, "It's a smile, it's a kiss, it's a sip of wine ... It's summertime!"

Speaking of wine, we just wrapped up Wine on the Fox and the turnout was greater than we could imagine! Over 4,500 people attended the two-day event. Good times, good music and good weather was enjoyed by all. We had many more families attend than in years past and it seemed more than half of the attendees were from places other than Oswego. Our information booth was very busy and the events scheduled for Venue 1012 was a hot topic.

Turning to Venue 1012, we have just announced the summer entertainment schedule. We have a great mix of entertainment that has something for everyone. Every Thursday night we will have a free event for our families and friends to enjoy. In addition, we will have special celebrations for Memorial Day and the Fourth of July. We even have a few Saturday events and ticketed events. A full schedule indeed!

This summer will also bring the opening of several new restaurants across town. Freddie's Off the Chain, RIOT Pizza and Oak + Bean all are scheduled to open downtown. Orchard Road will feature Beef Shack and over on Route 34, we will see Anchor Bar, home of the original Buffalo Wing!

We have a very exciting and action-packed summer ahead of us! Have a great summer – see you out there!

Sincerely,

Troy Parlier, Oswego Village President

FROM THE VILLAGE CLERK

GENERAL PRIMARY ELECTION JUNE 28, 2022

ELECTION DATES

- May 19:** Early voting begins, Kendall County Govt. Bldg., 111 Fox St., Yorkville
- May 31:** Last day to register to vote
- June 9:** Early voting begins, Village Hall, 100 Parkers Mill, Oswego

Early voting hours:
M-F 8 a.m.-7p.m.
Sat. 8 a.m.-2 p.m. Closed Sunday

- June 23:** Last day of early voting at Village Hall
- June 27:** Last day of early voting, Kendall County Govt. Bldg.
- June 28: Election Day**

CHECK YOUR POLLING PLACE

Verify your polling location and registration prior to Election Day. Review your information at electionconsole.com. For more information, visit Kendall County Election & Voter information page kendallcountyil.gov/offices/county-clerk-recorder/election-voter-information/voting or call 630-553-4104.

NEED TO REGISTER?

Several staff members are certified as registrars and are available to assist with voter registration at Village Hall, M-F, 9 a.m.-5 p.m. Miss the deadline? You can always register at the time of voting.

REFERENDUM ASKS FOR FUTURE RESIDENTS TO HELP PAY FOR NEW WATER SOURCE

Question will appear on June 28 General Primary ballot

The June 28 referendum question asks Oswego residents for approval of a new real estate transfer tax on future buyers of Oswego property to help fund the Village's connection to a new water source. The measure also includes an exemption for current Oswego homeowners who move to a new residence within Oswego, and ensures that all proceeds will be used only for the water system.

Village President Troy Parlier worked with staff to identify alternative revenue sources to help offset the Village's costs to connect to Lake Michigan water through the DuPage Water Commission, the Village's intended new water source. "Current residents have been asked to carry the burden for far too long. It's only fair to share the burden with future residents," said Parlier.

The goal is to limit additional costs for current residents. Different than property taxes, the real estate transfer tax is a one-time fee levied on the transfer of ownership or title of property from one individual or entity to another. It is used by many Illinois municipalities to pay for infrastructure improvements such as roads, bridges and sewers.

"We want to alleviate the burden on Oswego residents who have been paying property taxes, and find another funding source to bring drinking water to our community," Parlier said. "If passed, a real estate transfer tax will help shift the burden to future residents and businesses who purchase property in our community."

Under the proposed real estate transfer tax, future buyers of residential or commercial properties located within the village limits would be responsible for paying the tax. Current residents who own property (for at least one year) and then purchase and move to another home in Oswego would be exempt.

If passed, the real estate transfer tax rate would be \$3.00 per \$1,000 of the purchase price, or 0.3%. For example, the transfer tax on a new buyer of Oswego property with a purchase price of \$300,000 would be \$900.

The referendum question reads: "Shall the Village of Oswego impose a real estate transfer tax at a rate of \$3.00 per \$1,000 of value to be paid by the buyer of the real estate transferred, with the revenue of the proposed transfer tax to be used for construction and maintenance of the Village of Oswego water system, including connection to Lake Michigan water, and lessening the increase in future water rates?"

For more information, visit the Village's website and please vote in the June 28 election.

Frequently Asked Questions

What is a real estate transfer tax?

A real estate transfer tax is levied on the transfer of ownership or title of property from one individual or entity to another. The amount of the tax is based on the property's purchase price.

How is it different than property taxes?

A real estate transfer tax is a one-time fee that is collected as part of the closing costs on the sale of a property. A revenue stamp is required to be attached to the deed filed with the County.

Would current Oswego homeowners have to pay the real estate transfer tax?

No. Only new buyers would pay. Plus, current Oswego property owners who purchase a new home in Oswego would be exempt if they have lived in their home for a year or more.

Who pays real estate transfer tax?

New buyers of residential or commercial properties located within the village limits would be responsible for paying the tax. It does not apply to current residents who own and then purchase and move to a new residential property in the Village. Other exemptions may apply.

What are some other Illinois communities that have a real estate transfer tax?

- | | | |
|------------|-------------|------------|
| Aurora | Bolingbrook | Streamwood |
| Naperville | Romeoville | Woodridge |
| Joliet | Sycamore | Wheaton |

Why don't all Illinois municipalities impose a real estate transfer tax?

Only municipalities with home-rule status may impose a real estate transfer tax. Because the Village of Oswego enjoys home rule status, it can place a referendum on the ballot to ask voters for approval to allow the real estate transfer tax on new buyers.

What is the proposed real estate transfer tax rate?

The proposed rate is \$3.00 per \$1,000 of the purchase price, or 0.3%. For example, the transfer tax on a property with a purchase price of \$300,000 would be \$900.

How much money will be generated?

The proposed tax provides a way for future residents to offset the impact of water rate increases when the Village connects to Lake Michigan water. We estimate that it will generate more than \$500,000 per year. Without the tax, that amount would likely have to be generated through increased water rates.

What will the money be used for?

The referendum limits the use of the tax revenues to construction and maintenance of the Village of Oswego water system, including connection to Lake Michigan water.

If the real estate transfer tax is passed, when will it take effect?

Once election results are certified and the referendum passes, the tax may take effect as soon as August 1, 2022.

More information:

Visit oswegoil.org/referendum or call 630-554-3618.



Sing...Dance...Sip...Eat...Unwind!

Summer Event Series



The Village is excited to announce its 2022 summer event series presented by Allied First Bank at Venue 1012. The new outdoor entertainment venue, located at 1012 Station Drive, will host a combination of 17 ticketed and free events.

The series kicks off on Memorial Day weekend with two special events planned to honor veterans. On May 28, Country Bash showcases three different country bands. The Tribute to Veterans event on May 29 presents two complimentary concerts with patriotic favorites by Celebration Brass and Springbrook's Oswego Pops Orchestra.

The rest of the season is loaded with opportunities to sing, dance, sip, eat and unwind with family and friends of all ages in Oswego's own backyard. In addition to food trucks serving local fare, wine and beer will be available for purchase at select events. Attendees are encouraged to bring lawn chairs and blankets to relax while celebrating long summer nights.

This season features three categories of events: **Weekend Headliners, Thursday Night Block Party and Movies under the Stars.**

Weekend Headliners feature Springbrook's Oswego Pops Orchestra concerts, as well as top regional acts on select Saturdays with affordable ticket prices.

Free concerts with music from the 60s, 70s, 80s, Motown and pop favorites, along with a Back to School Bash, will be presented at **Thursday Night Block Parties.**

Movies Under the Stars rounds out the series with free family-friendly movies including Disney's Encanto and lawn games such as bags and giant Connect Four.

Tickets are now on sale for the four **Weekend Headliners** concerts: Country Bash on May 28 featuring Whiskeyfist; High Infidelity on June 11; Bon Jovi tribute band Bad Medicine with opener Coverlicious on July 23; and on September 3, AC/DC tribute band AZ/DZ with opener The Pyromaniacs.

Individual tickets cost \$15 for ages 13 and up; \$10 for active military, veterans and immediate family; children ages 12 and under enter free of charge at all events. Save money by purchasing a four-bundle concert pass for \$50 or \$32 for active military and veterans. ■

Memorial Day Weekend: Oswego Honors Veterans

Saturday, May 28: Country Bash- Oswego Honors Veterans

Kick start your summer with live music from Tim Gleason Band, Wild Daisy and headliner Whiskeyfist(right). Tickets start at \$15, \$10 for veterans, active duty military and family, and can be purchased at venue1012.com.

Sunday, May 29: Tribute to Veterans

Listen to star-spangled music favorites with Celebration Brass and Springbrook's Oswego Pops Orchestra. Free.



Seize the summer!

Weekend Headliners

Free and ticketed concerts

Saturday, May 28

Country Bash-Oswego Honors Veterans *
Tim Gleason Band, Wild Daisy and Whiskeyfist

Sunday, May 29

Tribute to Veterans: Celebration Brass and Springbrook's Oswego Pops Orchestra

Saturday, June 11

Hi Infidelity *

Saturday, July 2

United States Air Force Band of Mid-America: Starlifter

Saturday, July 23

Bad Medicine and Coverlicious *

Saturday, September 3

AZ/DZ and The Pyromaniacs *

*Ticketed concerts

Thursday Night Block Parties

Free concerts & events

Thursday, June 2

Johnny Russler & The Beach Bum Band

Thursday, June 30

R-Gang

Thursday, July 14

Sealed with a Kiss (SWAK)

Thursday, July 28

Hillbilly Rockstarz

Thursday, August 4

Back to School Bash: DJ John Werle + Oswego Pops Orchestra

Thursday, August 11

1976

Thursday, September 1

Dancing Queen, An ABBA salute

Movies Under the Stars

Free movies & family activities

Thursday, June 9
Disney's Encanto

Thursday, June 23
The Game Plan

Thursday, July 21
Spider-Man: No Way Home

Thursday, August 18
Disney's Luca

All events are family-friendly and have been created to engage a variety of different audiences. Learn more about the events and purchase tickets at venue1012.com.

Still time to participate in Community Yard Sale!

PASS ON YOUR gently-used-but-still-useful items at the Oswego Community Yard Sale on Friday, June 3 and Saturday, June 4. It's a great eco-friendly opportunity to clean out basements and attics by selling items for reuse and upcycling.

The cost to participate is \$7 plus applicable online fees. Residents who register will have their sales advertised on the Village of Oswego's website, oswegoil.org, social media pages, and a full-page ad in the *Oswego Ledger* on Thursday, June 2.

Register for the Community Yard Sale at oswegoil.org/yardsale. Registrations will NOT be accepted at Village Hall. Registration is open until 5 p.m. on Thursday, May 26.

For more information, contact Community Engagement Coordinator Julie Hoffman at 630-551-2344 or jhoffman@oswegoil.org.



NO TRASH COLLECTION MEMORIAL DAY, JULY 4 & LABOR DAY

Residential waste and recycling will not be picked up by Groot Industries on Memorial Day, May 30; Independence Day, July 4; and Labor Day, September 5. Collection will be delayed by one day during these holiday weeks.

For more information, please visit oswegoil.org/waste or call Public Works at (630) 554-3242. ■



Correct (left) and incorrect (right) brush piles for collection. To ensure that your brush is collected, place it neatly at the curb with cut ends all facing the same direction.

SUMMER BRUSH COLLECTION BEGINS MONDAY, JULY 11

THE VILLAGE of Oswego offers free brush collection throughout the growing season.

ZONES

The Village collects brush on alternate weeks by zone. There are two separate residential brush collection zones. See the map below. A list of the neighborhoods located in each zone can be found at www.oswegoil.org/brush.

RESTRICTIONS

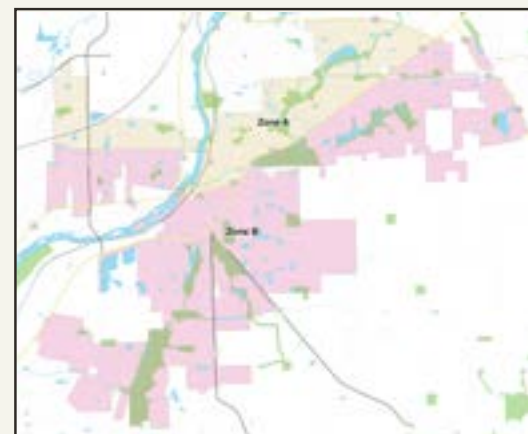
Brush is defined as tree and bush branches less than 5 inches in diameter. The brush collection program is not intended to handle branches, logs, or tree stumps as a result of large-scale tree trimming or removal. Crews will not pick up logs, wood, root balls, cuttings, or grass clippings. Crews will place an orange tag on your door indicating the reason they did not pick up the brush if it is the wrong material or placed at the curb too early.

BRUSH COLLECTION ZONES

Zone A includes all properties east of the Fox River and north of Route 34, as well as properties west of the Fox River and north of Mill Road. (Marked in yellow.)

Zone B includes all properties east of the Fox River and south of Route 34 as well as properties west of the Fox River and south of Mill Road. (Marked in pink.)

View the map and list of neighborhoods by zone: www.oswegoil.org/brush



BRUSH COLLECTION DATES BY ZONE

Zone A	Zone B
July 11	July 18
October 3 final for 2022	October 10 final for 2022

FOR COLLECTION

Place brush at the curb by 7 a.m. on Monday morning of the designated week, but no earlier than noon the Friday before. Public Works trucks will pass through an area once and will not return for brush placed after the deadline. Place unbundled brush parallel or perpendicular to the street in neat bundles with all cut ends facing the same direction. Do not put brush in a container or in the street.

The Village does not accept landscaping waste, tree branches or tree removals as a result of contracted work. Crews will not remove brush from commercial, industrial or other non-residential properties. ■

SAVE WATER AND SPRINKLE SMART

IN OSWEGO, drinking water is supplied by an underground aquifer with a limited supply. Ensuring the sustainability of our region's water supply requires everyone's efforts. Please note the following watering restrictions:

Properties with even-numbered street addresses may use Village-distributed water for sprinkling or automatic water systems for yard watering on even calendar dates 4-9 a.m. and 6-9 p.m.

Properties with odd-numbered street addresses may use Village-distributed water for sprinkling or automatic water systems for yard watering on odd calendar dates 4-9 a.m. and 6-9 p.m.

All non-addressed properties including but not limited to subdivision entrances, roadway islands and parkways may use Village-distributed water for sprinkling or automatic water systems for yard watering on Mondays, Wednesdays and Fridays 6-9 a.m. and 6-9 p.m.

There are no restrictions when using a hand-held watering device to water

gardens, trees, shrubs or other plants. Automatic watering of trees and shrubs with root feeders within the drip line of the tree or shrub follows the same even/odd restrictions.

Planting sod or grass seed is prohibited in July and August.

Property owners or residents who want to continuously water a newly seeded, slit-seeded or sodded area of more than 10 square yards must get a water permit at Village Hall or Public Works. This permit is free; however, violators will be fined.

About our water supply

Oswego gets its drinking water from a deep underground aquifer, which, according to the Illinois Water Survey, is being drawn from twice as fast as its being replenished. The Village of Oswego has partnered with Montgomery and Yorkville to tap into Lake Michigan Water to provide a new source of drinking water for our residents. Until the project is complete, conservation measures such as sprinkling regulations help slow the depletion of our water source. Read more at oswegoil.org/water-source.

Residents wishing to fill a swimming pool may have water brought in by tank through a contractor or use a private garden hose. Filling swimming pools with hydrant water is prohibited. Residents using a private hose must follow the water conservation rules.

If the filling will take longer than the conservation limitations, residents may get a permit to allow the hose to run for a period of 48 hours.

Questions?

Call Public Works 630-554-3242. ■



A map of the aquifer that supplies Oswego's water. Red indicates areas at risk of desaturation and wells going dry.

NEW WASTE CONTRACT

2022-2030 Groot Waste Contract Extension effective May 1, 2022

The Village entered into a eight-year extension with Groot Industries. The contract includes a first-year savings over the previous contract, reducing the annual increase from 4% to 2.99%. Plus, residents will receive a new 95-gallon toter.

Groot will also support the Village's leaf collection program with a \$75,000 annual contribution that will offset the cost of new equipment needed to modernize the program.

Free spring and fall clean-up collections

will be offered with an additional free collection in the fall.

Senior citizens who qualify for the senior utility discount will continue to receive 20% off the regular waste rate and a 35-gallon wheeled garbage cart. Seniors who are already registered for the discount do not need to visit Village Hall to re-register.

The price for landscape waste will remain frozen at \$2.50 per sticker for the term of the contract.

The contract continues to allow for unlimited refuse and recycling, as well as curbside electronics recycling.



New toters will be delivered at the end of May or beginning of June.

Find out more about waste, recycling and electronics recycling at oswegoil.org or call Public Works at 630-554-3242.



WHAT BETTER TIME AND PLACE TO PLANT A TREE ON ARBOR DAY THEN THE NEW OSWEGO DOG PARK!

On April 29, the 150th anniversary of Arbor Day, Village President Troy Parlier (and his two pups), Public Works Director Jennifer Hughes, Village Forester Russ Garcia and his crew helped plant a beautiful young Redpointe Maple on the grounds of the new Dog Park. Located at 100 Theodore Drive, it is adjacent to the Village's Public Works Facility and across the street from Prairiefest Park.

The Dog Park will feature a canine obstacle course, as well as separate areas for big and small dogs. A diverse selection of trees will be planted around the park's perimeter to provide shade and a welcoming place for Oswego dog owners and their four-legged friends for years to come.

The next stage of the project includes creating the entrance/exit, installing fencing, as well as putting in parking spots.

The project is targeted for completion by the end of summer. Stay tuned for additional details on dog park operations.

ELLA DOG PARK
Oswego, Illinois

CONCEPT DEVELOPMENT PLAN

A rendering of the Dog Park shows an obstacle course and separate play areas for small and large dogs.

FROM THE POLICE DEPARTMENT

Police committed to serving community

The Oswego Police Department serves as a progressive and innovative law enforcement agency, possessing strong values that emphasize ethical behavior, principled decision-making, commitment to serving the community and an appreciation for diversity. Nationally recognized by the Commission on Accreditation for Law Enforcement Agencies, the department is committed to constantly improving the quality of service provided to the citizens of Oswego.

OUR OFFICERS ARE ALWAYS ESSENTIAL.

The Oswego Police Department is now accepting applications for patrol officer. We're looking for new officers interested in growing with our community, candidates who come from diverse backgrounds of all kinds to strengthen our community-oriented approach to policing, and people who are up to the challenge of approaching each day as an opportunity to do things better.



LEARN MORE AND APPLY AT OPDRECRUITS.COM
APPLICATION DEADLINE: JUNE 3, 2022

IN BRIEF

VILLAGE BUDGET INCLUDES FUNDS FOR IMPROVEMENTS

The Village of Oswego passed its annual budget for Fiscal Year 2023 at the April 19 Board meeting. The budget includes \$49.7 million in expenditures.

For FY23, \$12.6 million of expenditures is being put directly back in the community through infrastructure improvements and new amenities. Strong Village revenues with conservative spending continue to serve the community well.

GET UPDATES IN REAL TIME

Follow the Village of Oswego on Facebook (@VillageofOswego) and Twitter (@Oswego-ill60543) for up-to-the-minute news and updates.

You can also subscribe to Village of Oswego emails or text alerts at www.oswegoil.org/alerts.

HETTS Auto Sales
Quality Pre-Driven Vehicles

Warranties Available

Downsized by **WARRANTY** in Oswego, IL

Matt Hettinger and John Hodgson in Sales
Owner: Ed Hettinger
Fax: (630) 554-9393
www.hettsautosales.com

Continuing the tradition of serving the Fox Valley
69 W. Washington St. (Rt 34)
Oswego, IL 60543
(630) 554-9339

God's Gifts Preschool
Oswego Presbyterian Church
www.godsgiftsps.com

Have 401(k) questions? Let's talk.

Jim Cargo
Financial Advisor
1063 Station Drive
Oswego, IL 60543
630-636-6317
www.edwardjones.com

Edward Jones
MAKING SENSE OF INVESTING

Member SIPC

HOMETOWNE INSURANCE
Services, Inc.
630-554-4040
Auto • Home • Life • Health • Commercial
WWW.HOMETOWNEINSURANCE.COM



Cheers to Wine on the Fox



MOTHER'S DAY WEEKEND OFFERED an ideal time to celebrate at Wine on the Fox. More than 4,500 attendees made memories with family and friends among the spring blooms along the Fox River.

Eight Illinois wineries served more than 100 varieties of wine

along with 2 craft beer selections from Oswego Brewing Co. Special thanks to our presenting sponsor John Greene Realtor. See page 5 for more outdoor fun at the Venue 1012 Summer Event Series presented by Allied First Bank.



Family. Friends. Community.

Janna Misek Ins Agcy Inc
 Janna Misek, Agent
 1136 Douglas Road
 Oswego, IL 60543
 Bus: 630-554-1540
 Mon-Thurs 9:00am to 8:00pm
 Friday 9:00am to 5:00pm
 Saturday 9:00am to 12:00pm
 Se habla Español

We're all in this together. State Farm® has a long tradition of being there. That's one reason why I'm proud to support The Community of Oswego. **Here to help life go right.®**



JOIN NOW TO HELP PRESERVE HISTORY



Corner of Main Street and Washington, circa late 1890s.

DO YOU WATCH THE HISTORY CHANNEL and enjoy the stories behind old homes and businesses in the area? The Village of Oswego's Historic Preservation Commission (HPC) needs several new members in order to continue preserving and enhancing Oswego's unique historic character.

If you have an interest and/or expertise in history, genealogy, architectural history, architecture, planning, archeology, real estate, historic preservation, building construction, engineering, law or finance, PLUS want to give back to our community, please consider joining HPC this summer. The group meets once a month to help support Oswego's historic preservation process and identify significant sites that represent preservation opportunities.

Fill out a Historic Preservation Commission application at oswegoil.org and select Apply for Commissions or contact Rod Zenner, Development Services Director, rzenner@oswegoil.org for more information.



Brian and Sons
 heating and air conditioning

Woman owned and operated for over 25 years

"Affordable HVAC"
630.906.7302
www.brianandsons.com

113 Main Street Suite 202 Oswego IL 60543

Debbie
 Owner

Mike
 Operations Manager

Paul
 Service Manager



Annual Water Quality Report 2021 Calendar Year | 2022 Consumer Confidence Report

THE VILLAGE OF OSWEGO WATER DIVISION IS PLEASED to report that your drinking water meets or exceeds all water quality standards and there were no violations issued in 2021. The Illinois Environmental Protection Agency Regional office in Elgin conducted our three-year engineering evaluation in 2018, and our water system received an exceptional rating. The Oswego community water supply was also commended on its exemplary facility maintenance and updating, and the professionalism and courtesy of its employees.

Your tap water was tested according to U.S. Environmental Protection Agency and state drinking water health standards. Our system vigilantly safeguards its groundwater supply, and we are working hard to continue providing the best water possible. This report summarizes the quality of water that we provided last year and informs you of initiatives currently underway to address issues. Included are details about where your water comes from, what it contains, and how it compares to standards set by regulatory agencies. We are committed to providing you with this information because informed customers are our best allies. If you have any questions about this report or concerning your water system, contact Timothy Zasada, Assistant Public Works Director-Utilities at (630) 554-3242. We want our valued customers to be informed about their water quality. If you would like to learn more, attend any of our regularly scheduled board meetings the first and third Tuesday of each month at 7 p.m. at Oswego Village Hall, 100 Parkers Mill.

Drinking water, including bottled water, may reasonably be expected to contain at least small amounts of some contaminants. The presence of contaminants does not necessarily indicate that water poses a health risk. More information about contaminants and potential health effects can be obtained by calling the U.S. EPA's Safe Drinking Water Hotline at (800) 426-4791.

Some people may be more vulnerable to contaminants in drinking water than the general population. Immuno-compromised persons such as persons with cancer undergoing chemotherapy, persons who have undergone organ transplants, people with HIV/AIDS or other immune system disorders, some elderly people, and infants can be particularly at risk from infections. These people should seek advice about drinking water from their health care providers. U.S. EPA and CDC guidelines on appropriate means to lessen the risk of infection by Cryptosporidium and other microbial contaminants are available from the U.S. EPA's Safe Drinking Water Hotline (800) 426-4791.

Oswego's current drinking water source is groundwater, delivered by eight wells. All wells are considered deep wells and draw water from a sandstone aquifer. While these aquifers provide high-quality water, they often contain elevated concentrations of naturally occurring Radium-226 and Radium-228. The Village of Oswego uses a filtration process for radium removal. The radium level at each

well is below the EPA's maximum allowable level of 5 picocuries per liter (pCi/L). Fluoride levels from the deep sandstone aquifer meet EPA and Illinois Department of Public Health standards for drinking water and no additional fluoride is added at any of the well sites. Oswego's Well No. 3 is located on Madison Street by the village center's 500,000-gal. water tower. This well produces 577 gallons per minute. Well No. 4 is located on Chicago Road and produces 589 gallons per minute. Well No. 6 is in the Fox Chase subdivision next to the 300,000-gal. water tower. This well produces 949 gallons per minute. Well No. 7 is in the Ogden Falls subdivision next to the 1.5-million-gal. water tower. This well produces 984 gallons per minute. Well No. 8 is located on Grove Road one-quarter mile south of Plainfield Road. This well produces 893 gallons per minute. Well No. 9 is located at 700 Yoakum Boulevard and produces 1,069 gallons per minute. Well No. 10 is located at 700 Cole Avenue and on site is a 1.5-million-gal. water tower. This well produces 1133 gallons per minute. Well No. 11 is located at 6701 Tuscany Trail off of Orchard Road and on site is a 1.5-million-gal. water tower. This well produces 1158 gallons per minute. All well water is treated to remove high levels of radium, chlorinated to kill any microbial contaminants that may be present, and treated with polyphosphate for corrosion control and mineral sequestration prior to being delivered into the distribution system.

Due to favorable monitoring history, aquifer characteristics, and inventory of potential sources of contamination, the Illinois EPA reissued a vulnerability waiver renewal for the sampling period of January 1, 2020, to December 31, 2022. This special exception permit extends sampling requirements to once every nine years for SOCs and cyanide and once every six years for VOCs for Wells No. 3, 4, 6, 7, 8, 9 & 10. Well No. 11 has not received waivers from IEPA at this time.

In addition to the informational section of the Water Quality Report, we have included a table for your review. This table will give you a better picture of the contaminants that were detected in your water.

The sources of drinking water (both tap water and bottled water) include rivers, lakes, streams, ponds, reservoirs, springs and wells. As water travels over the surface of the land or through the ground, it can dissolve naturally occurring minerals and radioactive materials, and pick up substances resulting from the presence of animals or human activity. Possible contaminants consist of:

Microbial contaminants, such as viruses and bacteria, which may come from sewage treatment plants, septic systems, agricultural livestock operations and wildlife.

Inorganic contaminants, such as salts and metals, which can be naturally occurring or result from urban storm water runoff, industrial or domestic wastewater discharges, oil and gas production, mining, or farming.

Pesticides and herbicides, which may come from a variety of sources such as agriculture, urban storm water runoff, and residential uses.

Organic chemical contaminants, including synthetic and volatile organic chemicals, which are by-products of industrial processes and petroleum production, and can also come from gas stations, urban storm water runoff, and septic systems.

Radioactive contaminants, which can be naturally occurring or be the result of oil and gas production and mining activities.

In order to ensure that tap water is safe to drink, U.S. EPA prescribes regulations that limit the amount of certain contaminants in water provided by public water systems. FDA regulations establish limits for contaminants in bottled water, which must provide the same protection for public health.

The source water assessment for our supply has been completed by the Illinois EPA. If you would like a copy of this information, visit Village Hall or call our water operator at (630) 554-3242. To view a summary version of the completed Source Water Assessments, including: Importance of Source Water; Susceptibility to Contamination Determination; and documentation/recommendation of Source Water Protection Efforts, you may access the **Illinois EPA website at <http://dataservices.epa.illinois.gov/swap/factsheet.aspx>**.

Based on information obtained in a Well Site Survey, published in 1989 by the Illinois EPA, six potential sources or possible problem sites were identified within the survey area of Oswego's wells. Furthermore, information provided by the Leaking Underground Storage Tank Section of the Illinois EPA indicated several additional sites with ongoing remediations which may be of concern. The Illinois EPA has determined that the Oswego community water supply's source water is not susceptible to contamination. This determination is based on several criteria including monitoring conducted at the wells; monitoring conducted at the entry point to the distribution system; and the available hydrogeologic data on the wells. Furthermore, in anticipation of the U.S. EPA's proposed Ground Water Rule, the Illinois EPA has determined that the Oswego community water supply is not vulnerable to viral contamination. This determination is based upon the completed evaluation of the following criteria during the Vulnerability Waiver Process: the community's wells are properly constructed with sound integrity and proper site conditions; a hydrogeologic barrier exists which prevents pathogen movement; all potential routes and sanitary defects have been mitigated such that the source water is adequately protected; monitoring data did not indicate a history of disease outbreak; and the sanitary survey of the water supply did not indicate a viral contamination threat.

Because the community's wells are constructed in a confined aquifer, which should prevent the movement of pathogens into the wells, well hydraulics were not considered to be a significant factor in the susceptibility determination. Hence, well hydraulics were not evaluated for this groundwater supply. A new source water assessment must be completed by July 2023. The Village is currently working on the new source water assessment report.

2021 Annual Water Quality Report

2021 Regulated Contaminants Detected

The next several tables summarize contaminants detected in your drinking water supply. Here are a few definitions and scientific terms which will help you understand the information in the contaminant detection tables.

- AL** **Action Level:** The concentration of a contaminant which, if exceeded, triggers treatment or other requirements which a water system must follow.
- Avg** **Average:** Regulatory compliance with some MCLs is based on running annual average of monthly samples.
- MCL** **Maximum Contaminant Level:** The highest level of a contaminant that is allowed in drinking water. MCLs are set as close to the Maximum Contaminant Level Goal as feasible using the best available treatment technology.
- MCLG** **Maximum Contaminant Level Goal:** The level of a contaminant in drinking water below which there is no known or expected risk to health. MCLGs allow for a margin of safety.
- MRDL** **Maximum Residual Disinfectant Level:** The highest level of disinfectant allowed in drinking water.
- MRDLG** **Maximum Residual Disinfectant Level Goal:** The level of disinfectant in drinking water below which there is no known or expected risk to health. MRDLGs allow for a margin of safety.
- N/A** **Not Applicable**
- NTU** **Nephelometric Turbidity Units**
- pCi/L** **Picocuries per liter:** A measure of radioactivity
- ppb** **Parts per billion** or micrograms per liter (ug/L) - or one ounce in 7,350,000 gallons of water.
- ppm** **Parts per million** or milligrams per liter (mg/L) - or one ounce in 7,350 gallons of water.
- TT** **Treatment Technique:** A required process intended to reduce the level of a contaminant in drinking water.

Coliform Bacteria

MCLG	Total Coliform MCL	Highest Number of Positive Samples	Fecal Coliform or E. coli MCL	Total Number of Positive E. coli or Fecal Coliform Samples	Violation	Likely Source of Contamination
0	MCL: presence of coliform bacteria in >5% of monthly samples (for systems that collect 40 or more samples/month). A total of 2.3 positive samples allowed per month.	2.3	Fecal Coliform or E. Coli MCL: A routine sample and a repeat sample are total coliform positive, and one is also fecal coliform or E. coli positive	0	No	Naturally present in the environment. Coliforms are bacteria that are naturally present in the environment and are used as an indicator that other, potentially harmful, bacteria may be present.

Lead and Copper

	Date Sampled	MCLG	Action Level (AL)	90th Percentile	Number of sites over AL	Units	Violation	Likely Source of Contamination
Copper	2020	1.3	1.3	0.923	0	ppm	No	Corrosion of household plumbing systems; erosion of natural deposits; leaching from wood preservatives. Copper is an essential nutrient, but some people who drink water containing copper in excess of the action level over a relatively short amount of time could experience gastrointestinal distress. Some people who drink water containing copper in excess of the action level over many years could suffer liver or kidney damage. People with Wilson's Disease should consult their personal doctor. Samples are taken every 3 years.
Lead	2020	0	15	2.04	0	ppb	No	Corrosion of household plumbing systems; erosion of natural deposits. Infants and children who drink water containing lead in excess of the action level could experience delays in their physical or mental development. Children could show slight deficits in attention span and learning abilities. Adults who drink this water over many years could develop kidney problems or high blood pressure. Samples are taken every 3 years.

If present, elevated levels of lead can cause serious health problems, especially for pregnant women and young children. Lead in drinking water is primarily from materials and components associated with service lines and home plumbing. The Village of Oswego is responsible for providing high quality drinking water, but cannot control the variety of materials used in plumbing components. When your water has been sitting for several hours, you can minimize the potential for lead exposure by flushing your tap for 30 seconds to 2 minutes before using water for drinking or cooking. If you are concerned about lead in your water, you may wish to have your water tested. Information on lead in drinking water, testing methods, and steps you can take to minimize exposure is available from the Safe Drinking Water Hotline or at <http://www.epa.gov/safewater/lead>.

2021 Annual Water Quality Report

Some contaminants are sampled less frequently than once a year; as a result, not all contaminants were sampled for during the CCR calendar year. If any of these contaminants were detected the last time they were sampled for, they are included in the table along with the date that the detection occurred.

	Collection Date	Highest Level Detected	Range of Levels Detected	MCLG	MCL	Units	Violation	Likely Source of Contamination
Disinfectants & Disinfection Byproducts								
Chloramines/ Chlorine	12/31/2021	2.0	1.7-2.0	4	4	ppm	No	Water additive used to control microbes. Some people who use water containing chloramines well in excess of the MRDL could experience irritating effects to their eyes and nose. Some people who drink water containing chloramines well in excess of the MRDL could experience stomach discomfort or anemia. Testing for chloramines is done daily.
Total Haloacetic Acids HAA5	1/10/2021	7	0-7.27	No goal for the total	60	ppb	No	Byproduct of drinking water disinfection. Some people who drink water containing haloacetic acids in excess of the MCL over many years may have an increased risk of getting cancer.
Inorganic Contaminants								
Barium	2021	0.0374	0.0118 - 0.0374	2	2	ppm	No	Discharge of drilling wastes; discharge from metal refineries; erosion of natural deposits. Some people who drink water containing barium in excess of the MCL over many years could experience an increase in their blood pressure. This contaminant is tested every three years.
Chromium	2021	5.4	0-5.4	100	100	ppb	No	Discharge from steel and pulp mills; Erosion of natural deposits.
Fluoride	2021	1.1	0.86-1.1	4	4	ppm	No	Erosion of natural deposits; water additive that promotes strong teeth; discharge from fertilizer and aluminum factories. Some who drink fluoride in excess of MCL over many years could get bone disease, including pain or tenderness of bones. Fluoride in drinking water at half MCL or more may cause mottling of children's teeth, usually ages less than 9 years old. Mottling, or dental fluorosis, may include brown staining and/or pitting of teeth, and occurs only in developing teeth before they erupt from the gums. This contaminant is tested every three years.
Iron	2021	0.341	0.174-0.341		1	ppm	No	This contaminant is not currently regulated by the U.S. EPA. However, the state regulates it. Erosion of natural deposits. Excessive iron in water may cause staining of laundry and plumbing fixtures and may accumulate as deposits in the distribution system. The contaminant is tested every three years.
Manganese	2021	15.1	0-15.1	150	15	ppb	No	This contaminant is not currently U.S. EPA-regulated, however, IL regulates it. Erosion of natural deposits. Excessive manganese in water may cause staining of plumbing fixtures and laundry & may produce unpleasant taste in beverages, e.g. coffee & tea.
Nitrite (measured as nitrogen)	2018	0.067	0-0.067	1	1	ppm	No	Runoff from fertilizer use; leaching from septic tanks, sewage; erosion of natural deposits. Infants below the age of six months who drink water containing nitrate in excess of the MCL could become seriously ill and, if untreated, may die. Symptoms
Sodium	2021	47.6	18.7-47.6		N/A	ppm	No	Erosion from naturally occurring deposits; used in water softener regeneration. Monitoring is required to provide information to consumers and health officials that are concerned about sodium intake due to dietary precautions. If you are on a sodium-restricted diet, you should consult a physician. This contaminant is tested every three years.
Volatile Organic Contaminants								
Xylenes	2015	0.00202	0-0.00202	10	10	ppm	No	Discharge from petroleum factories; discharge from chemical factories. The state requires us to monitor for certain contaminants less than once per year because the concentration of these contaminants do not change frequently. Some of our data, though accurate, is more than one year old. Some people who drink xylenes in excess of the MCL over many years could experience damage to their nervous system. This contaminant is tested every six years.
Radiological Contaminants								
Combined Radium 226/228	2021	4	0.0-3.7	0	5	pCi/L	No	Erosion of natural deposits. Some people who drink water containing radium 226 or 228 in excess of the MCL over many years may have an increased risk of getting cancer.
Gross alpha excluding radon and uranium	2021	11	1.31-11.04	0	15	pCi/L	No	Erosion of natural deposits. This contaminant is tested yearly.

Unregulated Contaminants: The U.S. EPA required water systems to monitor for new unregulated contaminants in 2018 and a second set of samples were analyzed in 2019. Water systems are required to publish the analytical results of all detections of contaminants. The Village only had three contaminants detected, which are in the following table. If you would like to view the entire report for the 2018-19 data, contact Public Works at (630) 554-3242.

Unregulated Contaminants UCMR4	Collection Date	Highest Level Detected	Range of Levels Detected	MCLG	MCL	Units	Violation	Likely Source of Contamination
Bromide	5/14/2019	0.120	0.020-0.120	N/A	N/A	ppm	No	Bromide is commonly found in nature. Mandatory health effects language has not been established.*
Germanium	5/14/2019	0.00040	0.000323-0.00040	N/A	N/A	ppm	No	Naturally occurring element; commercially available in combination with other elements and minerals; a byproduct of zinc ore processing; used in infrared optics, fiber optic systems, electronics and solar applications. Mandatory health effects language has not been established. Possible health concerns: kidney or liver function, anemia, muscle weakness, harm to the peripheral nervous system.*
Manganese	5/14/2019	0.0140	0.0030-0.0140	N/A	N/A	ppm	No	This contaminant is not currently regulated by the U.S. EPA. However, the state regulates. Erosion of natural deposits. Excessive manganese in the water may cause staining of plumbing fixtures and laundry. It may also produce an unpleasant taste in beverages, including coffee and tea.

*Unregulated Contaminants: A maximum contaminant level (MCL) for these contaminants has not been established by either state or Federal regulations, nor has mandatory health effects language been set. The purpose for monitoring these contaminants is to assist the U.S. EPA in determining the occurrence of unregulated contaminants in drinking water and whether future regulation is warranted.

In 2020, our water system was sampled as part of the State of Illinois PFAS statewide investigation. Eighteen PFAS compounds were sampled, and none were detected in our finished drinking water. For more information about PFAS health advisories go to <https://www2.illinois.gov/epa/topics/water-quality/pfas/Pages/pfas-healthadvisory.aspx>

Water Hardness: Oswego wells have high a concentration of hardness minerals. For the settings on water softeners the wells have total GRAINS of 15 or 256 Mg/L.

Total Dissolved Solids: Oswego wells have a range of 266 – 299 Mg/L.

Total Alkalinity: Oswego wells have a range of 278 – 448 Mg/L.

Low Water Pressure: If you have a water softener and you notice that your water pressure has been declining over time, try putting your water softener into bypass and see if your pressure returns to normal.

Violation Summary Table

No violations were issued in 2021.



JUNE

02 Johnny Russler & The Beach Bum Band with island tunes. More at venue1012.com.

03-04 Shop and help support the environment at the **Oswego Community Yard Sale**.

05 Find fresh produce from local farmers in the heart of downtown Oswego at the **Oswego Country Market**. Stop by Main Street from 9 a.m. to 1 p.m. every Sunday through September.

09 Movies Under the Stars presents **Disney's Encanto**. Free. Info at venue1012.com.

11 **High Infidelity** concert featuring 80s rock including Journey, REO, Bon Jovi and Boston. Buy tickets at venue1012.com.

14 The **Oswego Village Board** meets at 7 p.m. at Village Hall to vote on Village business. Meetings are open to the public and include a public forum for those wishing to speak. A Committee of the Whole meeting precedes at 6 p.m. to allow more in-depth discussion on issues. Agendas and live meetings: oswegoil.org.

16-19 **Prairiefest** presented by Oswegoland Park District. Info at prairiefest.com

23 Movies Under the Stars presents **The Game Plan**. Free. Info: venue1012.com.

25 Seniors: Learn about the new dog park and Real Estate Transfer Tax Referendum at **Coffee & Conversations for Seniors** with Village President Troy Parlier.

27 The Committee of the Whole meets at 6 p.m. and the **Oswego Village Board** meets at 7 p.m.

30 **R-Gang** concert with Motown and Rhythm & Blues. Free. More at venue1012.com.

JULY

02 U.S. Air Force Band of Mid-America: Starlifter concert. Free. venue1012.com

04 Fourth of July Fireworks at dusk at Prairie Point Park.



04 Village offices will be closed and garbage collection will be delayed one day in observance of **Independence Day**.

11 **Brush Collection in Zone A**. Set brush out by 7 a.m. Monday for collection. See p. 6.

14 **Sealed with a Kiss (SWAK)** concert with high energy music. Free. More at venue1012.com.

18 **Brush Collection in Zone B**. Set brush out by 7 a.m. Monday for collection. See p. 6.

19 The Committee of the Whole meets at 6 p.m. and the **Oswego Village Board** meets at 7 p.m. at Village Hall.

21 Movies Under the Stars presents **Spider-Man: No Way Home**. Free. Info: venue1012.com.

23 Headliner Bon Jovi-tribute band **Bad Medicine** and Coverlicious concert featuring 80s, rock, pop & funk. Buy tickets at venue1012.com.

28 **Hillbilly Rockstarz** concert with mix of country and rock. Free. More at venue1012.com.



AUGUST

02 Committee of the Whole meets at 6 p.m. and the **Oswego Village Board** meets at 7 p.m. Village Hall.

02 Join your neighbors and the Oswego Police Dept. for **National Night Out** at Prairie Point Park. Info at oswegoil.org

04 **Back to School Bash with DJ John Werle**- music, dancing and fun for kids of all ages. Later, enjoy Disney tunes by **Springbrook's Oswego Pops Orchestra**.

07 Cultural Arts Commission presents **LUNAFEST**, a short-film festival by, for and about women. Info: oswegoil.org/calendar

11 **1976** concert with classic 70s rock & roll music. Free. More at venue1012.com.

16 Committee of the Whole meets at 6 p.m. and **Oswego Village Board** meets at 7 p.m. at Village Hall.

18 Movies Under the Stars presents **Disney's Lucas**. Free. Info at venue1012.com.



Looking for more fun outdoors this summer? Check out more than 14 free events and 4 ticketed concerts at: venue1012.org

MAY 28 & 29

Memorial Day Weekend

Saturday, May 28:

Country Bash-Oswego Honors Veterans

Tim Gleason Band, Wild Daisy and headliner **Whiskeyfist**

Saturday, May 29:

A Tribute to Veterans

Celebration Brass and Springbrook's Oswego Pops Orchestra





100 Parkers Mill
Oswego, IL 60543



*****ECRWSEDDM***

Postal Customer

JUNE 28 REFERENDUM ON FUNDING NEW WATER SOURCE



IMPORTANT INFORMATION

What:

Referendum question to ask voters for approval of a new real estate transfer tax on FUTURE buyers of Oswego property.

Why:

To find help fund the Village’s connection to a new water source by shifting the burden to FUTURE residents and businesses who purchase property in our community.

When:

Vote at June 28 primary election or through early voting, June 9-23 at Village Hall. See page 2 for more voting information.

History:

After years of study, it has been determined that Oswego’s aquifer will no longer be able to provide a sustainable water source for the community.

Staff researched an alternative revenue source that could be borne primarily from non-residents to connect to Lake Michigan drinking water through the DuPage Water Commission.

Total costs are still being determined, but are estimated to be in the upwards of \$75 million.

Real estate transfer taxes are imposed by many Illinois municipalities on new homebuyers to help offset the costs for infrastructure improvements such as roads, bridges, and sewers.

The proposed tax provides a way for future residents to offset the impact of water rate increases when the Village connects to Lake Michigan water.



The Village estimates that the real estate transfer tax will generate more than \$500,000 per year. Without the tax, that amount would likely have to be generated through increased water rates.

For more information and FAQs, see page 2, visit oswegoil.org or call the Village at 630-554-3618.