

Oswego News

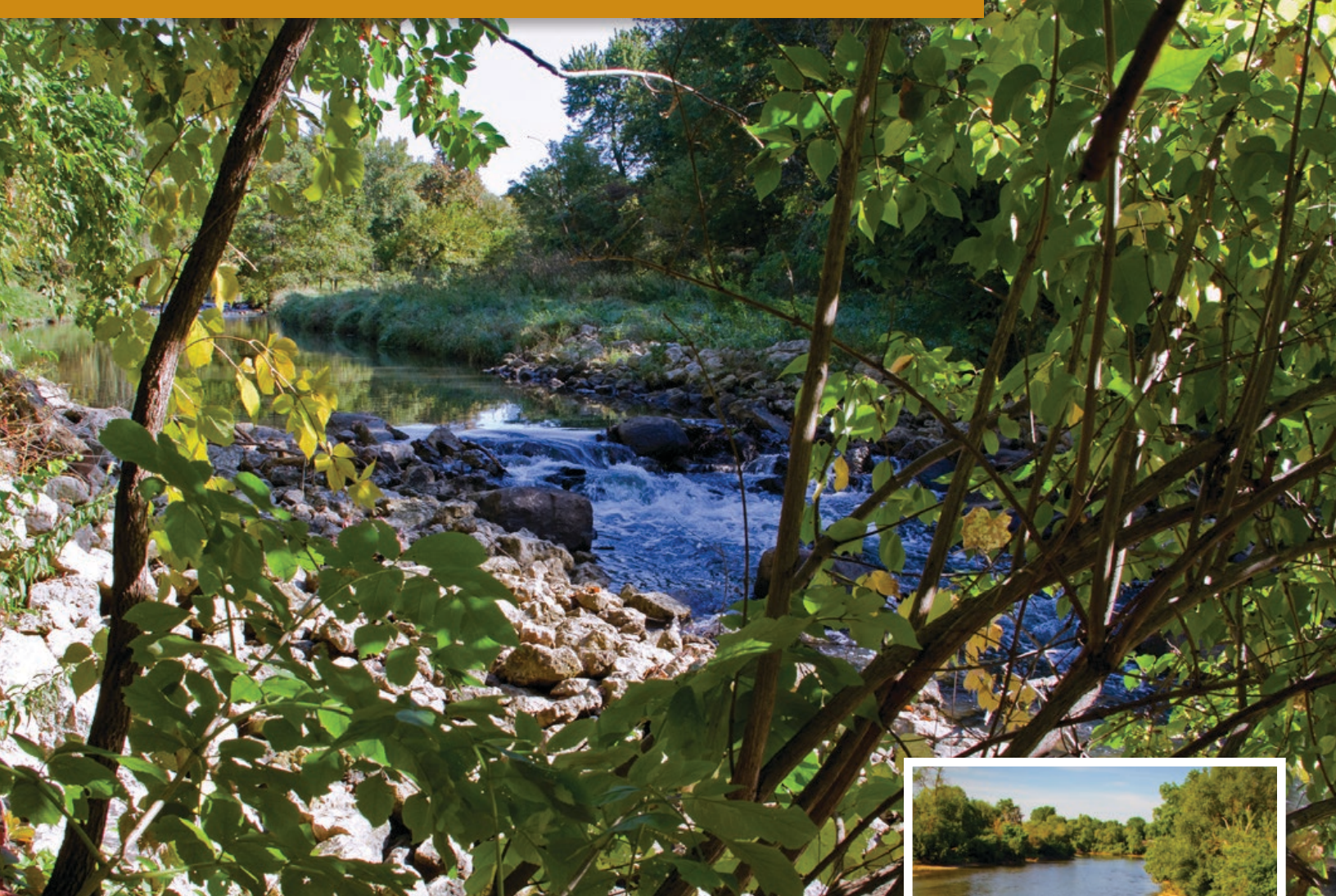


100 Parkers Mill
Oswego, IL 60543
630-554-3618
(fax) 630-554-3306
www.oswegoil.org

Volume 23, Issue 2

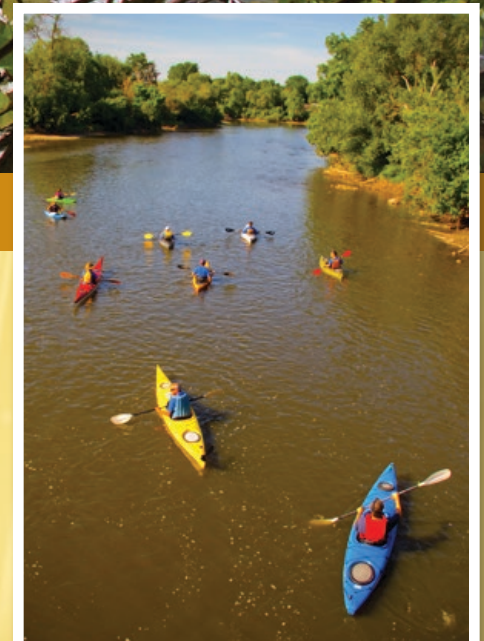
Summer 2015

Serving the Village of Oswego Since 1833



Inside This Issue

From the Village President.	Page 2
From the Clerk.	Page 3
Economic Development News . . .	Page 4
Property of the Season.	Page 5
Water Quality Report	Page 6
Public Works	Page 10



Reminder: No Parking 2am-6am on Village Streets

Dear neighbors,

Gardens are in bloom, festivals and block parties are plentiful, and Oswego is displaying its summer best! We have always celebrated the seasons with a diversity of offerings for residents to enjoy. We are proud to be partners with many others in our community so that, together, we can provide even more opportunities for you to enjoy all that Oswego has to offer.

We gather on the Village Hall Plaza for Movies in the Park, beat feet to the Oswegoland Park District's Country (Farmers') Market on Main Street every Sunday morning, listen to fantastic bands at Beats and Eats, pack scrumptious picnic baskets to enjoy at Arranmore Arts' CabCab, flock to PrairieFest for the Park District's wildly successful community festival...and it's only June!

July will bring more occasions for celebration. This year our Nation's Independence Day holiday will be heralded in with an Independence Day Eve fireworks show on July 3 at PrairiePoint Park at 9:30 p.m. The Fox River calls us to stroll, fish, kayak, canoe or simply skip stones into its serene water. On warm afternoons take a dip in the Park District's aquatic center or enjoy an adventure on paper in the Library's cool spaces. Don't forget to pursue the treasures at the Senior Center's garage sale or the shops around town.

In closing, I want to thank the residents and staff of the Village for the warm welcome I have received as your Village President. As you are out and about this summer and see me, please stop and say "hi!" I'd love to talk with you about what you're enjoying during this wonderful summer season.

Warmest regards,

Gail Johnson

Village President



Did You Know....

The Village Clerk's Office has a new page.....

Please visit www.oswegoil.org Choose the Government tab and click on "Village Clerk"

KUMON®
MATH. READING. SUCCESS.

Academic Enrichment
Pre-K - 12th Grade
800.ABC.MATH | www.kumon.com

For the kind of benefits that last a lifetime, call today for a FREE Placement Test.

Kumon Math & Reading Center of Oswego
2440 U.S. Route 30, Ste. B107, Oswego, IL 60543
630.229.6083 • www.kumon.com/oswego



© 2013 Kumon North America. All rights reserved.

OSWEGO VILLAGE BOARD

- Gail Johnson Village President
- Tina Touchette Village Clerk
- Ryan Kauffman Village Trustee
- Karin McCarthy-Lange Village Trustee
- Pam Parr Village Trustee
- Judy Sollinger Village Trustee
- Scott Volpe Village Trustee
- Joe West Village Trustee

ADMINISTRATION

- Carrie Hansen . . . Interim Village Administrator
- Jeff Burgner Chief of Police
- Michele Brown . . . Community Relations Manager
- Christina Burns . . . Asst. Village Administrator/HR Director
- Vijay Gadde Economic Development Director
- Jay Hoover Building and Zoning Manager
- Mark Horton Finance Director
- Jennifer Hughes . . . Public Works Director
- Rod Zenner Community Development Director

Oswego News

This newsletter is published quarterly and mailed to over 14,000 Oswego postal customers. Comments, suggestions and questions are welcome at info@oswegoil.org.



100 Parkers Mill
Oswego, IL 60543
630-554-3618
(fax) 630-554-3306
www.oswegoil.org

VILLAGE DEPARTMENTS

- Administration551-2360
- Building & Zoning554-2310
- Community Development . .554-3622
- Economic Development . . .551-2335
- Finance554-0864
- Police (Non-Emergency) . . .551-7300
- Public Works554-3242
- Village Clerk554-3259
- Utility / Water Billing554-2282
- Newsletter Advertising554-4636

We appreciate YOUR BUSINESS!

BUSINESS REGISTRATION REQUIREMENT

- All persons conducting business within the Village shall register their business
- All businesses must renew annually
- Registration applies to both home and commercial businesses
- Commercial businesses must:
 - Verify properly zoned
 - Obtain a certificate of occupancy
 - Schedule an on-site inspection
 - Pay required fees
 - Be issued a business registration certificate before opening or conducting business
- Home businesses must:
 - Verify the home occupation is permitted
 - Pay required fees
 - Be issued a business registration certificate before opening or conducting business
- Non-for-profit organizations will be required to register. Please contact the Village Clerk's Office for more information

REGISTRATION FEES AND FINES

- Certificate of Occupancy Fee = \$90.00
- Commercial Registration Fee = \$50.00; Annual Fee = \$25.00
- Home Registration Fee = \$25.00; Annual Fee = \$10.00
- Non-For-Profit Registration Fee = \$0.00
- Failure to obtain a business registration will result in a first offense fine of \$55.00.

Business registration applications can be obtained from the Village Clerk's Office or from the Village's website at www.oswegoil.org

Family owned and operated for over 35 years.


We offer a full array of rehabilitation services, in our new, state of the art rehabilitation center.



THE TILLERS
NURSING & REHABILITATION CENTER

4390 Route 71, Oswego, IL 60543
p: 630/554-1001 www.thetillers.com

CHECK OUT OUR
5 STAR
RATING



www.medicare.gov/nhcompare



Restaurant patrons can take home their unfinished bottle of wine.
TRUE OR FALSE

TRUE. An Illinois liquor licensed restaurant may permit a patron to remove one unsealed and partially consumed bottle of wine for off-premises consumption, provided the patron has purchased a meal and consumed a portion of the wine.

Retailers must provide a dated receipt for the wine and securely seal the bottle in a transparent one-time use, tamper-proof bag.

Patrons are advised not to transport the wine in the driver's compartment of the vehicle.

27

- Ordinances Approved February 3, 2015- May 5, 2015

HOW TO VIEW

- Approved ordinances may be viewed on the Village's website at www.oswegoil.org



**ADVENTURES IN LEARNING
EARLY LEARNING CENTER**
"GETTING YOUR CHILD READY FOR SCHOOL"

**NOW ENROLLING for SUMMER CAMP
and Fall 2012 PRESCHOOL!**

1020 STATION DRIVE • OSWEGO
(NEXT TO THE PARK AND RIDE)
CALL (630) 551-4800 FOR MORE INFORMATION

FREE
1st Week
of Tuition and
Registration!
(New families only)

SERVING CHILDREN SIX WEEKS THROUGH 12 YEARS
PRESCHOOL FOR 3, 4 & 5 YEAR OLDS
SPANISH & SIGN LANGUAGE FOR ALL AGES

Economic Development News

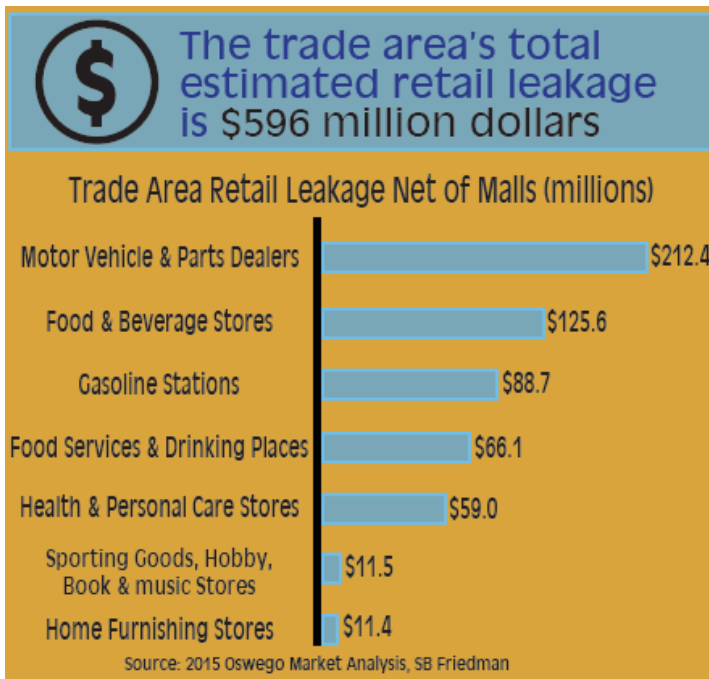
NEWS & EVENTS

Chicago Metro retail sales exceed pre-recession levels

The 2014 annual report issued by Melaniphy & Associates confirms the Chicago Metro retail sales have far exceeded the 2007 level of \$106.8 billion. The region's retail sales rose to \$116.2 billion with the following categories leading:

- Automotive & filling stations grew by over 1.0 billion (over 2013)
- Drugs & miscellaneous retail stores grew by 790 million
- General merchandise store sales increased by \$764 million

Locally, these fast growing retail sectors have been the focus of business recruitment by the Oswego economic development staff. The following chart depicts the unmet demand by major retail categories for the Oswego trade area, which includes approximately a five-mile radius adjusted for competition.



SITES & BUILDINGS

Who's Opening and Where

The business owner of Gratto Italian Tapas in Geneva is planning to open the new Tuscany Tavern at the old Hoa Sushi place at 4571 Route 71. It will be a Mediterranean style restaurant with wood burning stove. They are currently doing the buildout work and planning to open by July 1st, 2015.

Pd's Wines & Spirits is slated to open at 1236 Douglas Road vacated by Vincitore Wine Cellar.



4571 Route 71, Washington Square

The internal buildout is underway for the expansion of **Distinctive Dental Care**, based in Villa Park, at 1301 Orchard Road in the old PNC Bank building.

Waxing the City is moving into 1212 Douglas Road at Mason Square Shopping Center.

Orient Massage is moving into 4546 Route 71 at the Oswego Plaza.

Commercial Businesses Registered in March 2015

Health Plus LLC
Abra Auto Body & Glass
Lavi Spa
De'Zsa Vu
Nail Time Spa
Softubs Inc.

PARTNER NEWS

You're Invited! **KENDALL COUNTY JOB & RESOURCE FAIR**

Friday, June 19, 2015
9:30 a.m. — 1:00 p.m.
Plano Campus – Waubensee Community College

For further information please visit:
www.waubensee.edu/jobfairs

We hope that your company can benefit from this exciting community event!



2015 Summer Property of the Season

The Oswego Historic Preservation Commission is proud to nominate the J.P. Schickler Building as the Summer 2015 Property of the Season. The building at 75-79 Main Street was constructed in 1900 by John P. Schickler, a well-known local saloon keeper. The brick building had an elaborate iron oriel window above the corner entrance with a leaded glass diamond pattern transom. Between each window opening was a thin Roman column and decorative wreaths were embossed in the metal below the window sills. Above the window was a stone balustrade under an engraved nameplate that read "Schickler 1900". The window was replaced sometime after the 1950s and replaced with the current flat window. On



the ground floor, the large plate glass windows are surrounded by decorative cast iron casings with rosettes. The windows on the second floor have thick limestone sills and slightly curved brick lintels above. A decorative brick checkerboard pattern is followed by a soldier course of bricks topped by brick corbel cornice with limestone caps.

Mr. Schickler had purchased the lot in 1897, but put off construction on a new building until March 1899. The construction continued through late spring and into summer.

Once completed, H.S. Warner moved his business into the corner store at 79 Main Street, while Frank Van Doozer had moved his barber shop into the small storefront at 75 Main Street. A few short months later, in March 1900, a fire broke out in Warner's shop destroying the building. The Kendall County Record reported March 21, 1900:

"The event has thrown a gloom over Oswego; the west side brick block, with plate glass front was its pride, and now the half of it consists in fire-gutted walls; its young merchant just fairly started in life now broken up; but everybody is full of praise for the boys of the fire company; it is believed they done all that was possible."

Work began right away to rebuild the brick building. By late April 1900 the brick coursework was being completed. John Schickler's saloon was open for business by the end of June, and the Schickler family moved into new apartments above the saloon in September of that year. John Schickler's saloon remained in business at this busy corner until 1912 when he sold the business to Jacob Frey. Frey was in business only a short time. Saloons became highly regulated in Oswego when the town voted to go "dry." A permit to run a "dram shop", or saloon, was exorbitant at \$1,250.00 per year. In December 1916, Mr. Schickler renovated his storefront and changed the business into a grocery store and ran that business for a couple of years, until he sold the business to Charles and Richard Schultz who ran a meat market in town.

Mr. Schickler never entirely exited the liquor business; during the prohibition years he and his son Clarence were arrested for running an enormous still operation out on their farm. Here is what the Kendall County Record had to say in April 1923 about the bust:

"Here, on Monday morning, the officers found a modern still working at full tilt turning out alcohol. The still was of 23 gallon capacity a day... Schickler is a former Oswego saloon keeper, going into the farming business when Oswego went dry... When the raid was made the officials found 39 gallon cans and three 10-gallon cans of alcohol, 60 cases of the rubbing alcohol, and 75 pints of whisky."

John Schickler sold the building to the Schultz brothers (Charles and Richard) in December 1915, and the brothers moved their expanded business into the block

in January 1916. The brothers renovated the small barber shop at the end of the building to begin selling hardware. The Schickler's moved out the apartments above, and Charles Schultz and his new bride moved in. Charles operated the grocery store for 35 years until his retirement in 1946. He sold the business to his nephew and loyal employee, Carl Bohn. Mr. Bohn operated such a successful grocery that he outgrew this location in 1954, moving into a new larger storefront on Main Street in April 1954. The building stayed in the Schultz family for the next 60 years until it was sold in 1978 to Georgia Miller. In the years that followed the building housed the Oswego Post Office, Decor Paint and Wallpaper Store, and the Marmalade Tree since July, 1997.





26 Main Street
Oswego, IL 60543
630.551.2300

Bike Sales
Service & Rentals
Bike Rentals - \$12 for 2 hours!

Free Pick-up and Delivery for Service on
Your Bicycle in Oswego!

www.oswegocyclery.com

Enrolling now for Fall 2015



God's Gifts
Preschool

551-4454

Train up a child in the way
he should go... Pr 22:6

2014 Annual Water-Quality Report

This year, as in years past, your tap water was tested according to USEPA and state drinking water health standards. Our system vigilantly safeguards its groundwater supply, and we are working hard to continue providing the best water possible. This report summarizes the quality of water that we provided last year and informs you of the problems we are working on overcoming. Included are details about where your water comes from, what it contains, and how it compares to standards set by regulatory agencies. We are committed to providing you with information because informed customers are our best allies.

If you have any questions about this report or concerning your water system, please contact Jerry Weaver, Public Works Utilities Service Director at 630-554-3242. We want our valued customers to be informed about their water quality. If you would like to learn more, please feel welcome to attend any of our regularly scheduled board meetings the first and third Tuesday of each month at 7:00 p.m. in the Village Hall, 100 Parkers Mill.

Oswego uses groundwater provided by eight wells. All wells are considered deep wells, and draw water from a sandstone aquifer. While these aquifers provide a high quality of water and excellent potential for meeting the water demands of their consumers, these wells often contain elevated concentrations of Radium-226 and Radium-228. The Village of Oswego is utilizing a new process for radium removal. The water from each of the Village's current eight, high-capacity, deep wells contains naturally occurring radium as do many deep wells in northern Illinois. The radium level at each well is below the Environmental Protection Agency's (EPA) maximum allowable level of 5 picocuries per liter (pCi/L).

The water from all eight of Oswego's wells is treated with a polyphosphate to suspend particles in the water. The water is also chlorinated to kill any bacteria that may be present. With pulling water from a deep aquifer, the water itself has enough fluoride in it so Oswego does not have to add any. Oswego's Well No. 3 is located on Madison Street by the village center's 500,000-gallon water tower. This is a 950-gallon per minute well and the water is chlorinated, treated and delivered into the system. Oswego's Well No. 4 is located on Chicago Road by the car wash. This is a 800-gallon per minute well and the water is chlorinated, treated and delivered into the system. Oswego's Well No. 6 is located in the Fox Chase subdivision next to the 300,000-gallon water tower. This is a 1000-gallon per minute well and the water is chlorinated, treated and delivered into the system. Oswego's Well No. 7 is in the Ogden Falls subdivision next to the 1.5 million gallon water tower. This well produces 1100 gallons per minute and the water is chlorinated, treated and delivered into the system. Well No. 8 is located on Grove Road ¼ mile south of Plainfield Road. This well produces 1100 gallons per minute and the water is chlorinated, treated and delivered into the system. Well #9 is located at 700 Yoakum Blvd. This well produces 1000 gallons per minute and water is chlorinated, treated and delivered into the system. Well No. 10 is located at 700 Cole Avenue. This well produces 1000 gallons per minute and water is chlorinated, treated and delivered into the system. Well No. 11 went on line in February 2010 and is located at 6701 Tuscany Trail off of Orchard Road. This is a 1000 gallons per minute well and the water is chlorinated, treated and delivered into the system.

Due to favorable monitoring history, aquifer characteristics, and inventory of potential sources of contamination, our water supply was issued a vulnerability waiver renewal for Wells No. 3, 4, 6, 7, 8, 9 & 10. Well No. 11 has no waivers issues as of yet.

In addition to the informational section of the Water Quality Report, we have included for your review a table. This table will give you a better picture of the contaminants that were detected in your water.

ANNUAL DRINKING WATER QUALITY REPORT

OSWEGO IL0930150
Annual Water Quality Report for the period of January 1 to
December 31, 2014

This report is intended to provide you with important information about your drinking water and the efforts made by the water system to provide safe drinking water.

The source of drinking water used by
OSWEGO is Ground Water

For more information regarding this report contact:
Jerry Weaver, Utilities Services Director - 630-554-3242

SOURCE OF DRINKING WATER

The sources of drinking water (both tap water and bottled water) include rivers, lakes, streams, ponds, reservoirs, springs, and wells. As water travels over the surface of the land or through the ground, it dissolves naturally-occurring minerals and, in some cases, radioactive material, and can pick up substances resulting from the presence of animals or from human activity.

Contaminants that may be present in source water include:

- Microbial contaminants, such as viruses and bacteria, which may come from sewage treatment plants, septic systems, agricultural livestock operations, and wildlife.
- Inorganic contaminants, such as salts and metals, which can be naturally-occurring or result from urban storm water runoff, industrial or domestic wastewater discharges, oil and gas production, mining, or farming.

When I say "good,"
you say "neighbor."

Now that's teamwork.

CALL FOR A QUOTE 24/7



Janna Misek Ins Agcy Inc
Janna Misek, Agent
1136 Douglas Road
Oswego, IL 60543
Bus: 630-554-1540
JannaMisek.com



- Pesticides and herbicides, which may come from a variety of sources such as agriculture, urban storm water runoff, and residential uses.
- Organic chemical contaminants, including synthetic and volatile organic chemicals, which are by-products of industrial processes and petroleum production, and can also come from gas stations, urban storm water runoff, and septic systems.

- Radioactive contaminants, which can be naturally-occurring or be the result of oil and gas production and mining activities.

Drinking water, including bottled water, may reasonably be expected to contain at least small amounts of some contaminants. The presence of contaminants does not necessarily indicate that water poses a health risk. More information about contaminants and potential health effects can be obtained by calling the EPA's Safe Drinking Water Hotline at (800) 426-4791.

In order to ensure that tap water is safe to drink, EPA prescribes regulations which limit the amount of certain contaminants in water provided by public water systems. FDA regulations establish limits for contaminants in bottled water which must provide the same protection for public health.

Some people may be more vulnerable to contaminants in drinking water than the general population.

Immuno-compromised persons such as persons with cancer undergoing chemotherapy, persons who have undergone organ transplants, people with HIV/AIDS or other immune system disorders, some elderly and infants can be particularly at risk from infections. These people should seek advice about drinking water from their health care providers. EPA/CDC guidelines on appropriate means to lessen the risk of infection by Cryptosporidium and other microbial contaminants are available from the Safe Drinking Water Hotline (800-426-4791).

If present, elevated levels of lead can cause serious health problems, especially for pregnant women and young children. Lead in drinking water is primarily from materials and components associated with service lines and home plumbing.

We cannot control the variety of materials used in plumbing components. When your water has been sitting for several hours, you can minimize the potential for lead exposure by flushing your tap for 30 seconds to 2 minutes before using water for drinking or cooking. If you are concerned about lead in your water, you may wish to have your water tested. Information on lead in drinking water, testing methods, and steps you can take to minimize exposure is available from the Safe Drinking Water Hotline or at <http://www.epa.gov/safewater/lead>.

SOURCE WATER ASSESSMENT

We want our valued customers to be informed about their water quality. If you would like to learn more you may view a summary version of the completed Source Water Assessment, including importance of Source Water, Susceptibility to Contamination Determination and documentation/recommendation of Source Water Protection Efforts. You may access this information at the Illinois EPA website at <http://www.epa.state.il.us/cgf-bin/wp/swap-fact-sheets.pl>

Based on information obtained in a Well Site Survey, published in 1989 by the Illinois EPA, six potential sources or possible problem sites were identified within the survey area of Oswego's wells. Furthermore, information provided by the Leaking Underground Storage Tank Section of the Illinois EPA indicated several additional sites with ongoing remediations which may be of concern. The Illinois EPA has determined that the Oswego Community Water Supply's source water is not susceptible to contamination. This determination is based on a number of criteria including: monitoring conducted at the wells; monitoring conducted at the entry point to the distribution system; and the available hydrogeologic data on the wells. Furthermore, in anticipation of the U.S. EPA's proposed Ground Water Rule, the Illinois EPA has determined that the Oswego Community Water Supply is not vulnerable to viral contamination. This determination is based upon the completed evaluation of the following criteria during the Vulnerability Waiver Process: the community's wells are properly constructed with sound integrity and proper site conditions; a hydrogeologic barrier exists which prevents pathogen movement; all potential routes and sanitary defects have been mitigated such that the source water is adequately protected; monitoring data did not indicate a history of disease outbreak; and the sanitary survey of the water supply did not indicate a viral contamination threat. Because the community's wells are constructed in a confined aquifer, which should prevent the movement of pathogens into the wells, well hydraulics were not considered to be a significant factor in the susceptibility determination. Hence, well hydraulics were not evaluated for this groundwater supply.

2014 REGULATED CONTAMINANTS DETECTED

Lead and Copper

Definitions: Action Level Goal (ALG): The level of a contaminant in drinking water below which there is no known or expected risk to health. ALGs allow for a margin of safety. Action Level: The concentration of a contaminant which, if exceeded, triggers treatment or other requirements which a water system must follow.

Lead And Copper	Date Sampled	MCLG	Action Level (AL)	90th Percentile	# Sites Over AL	Units	Violation	Likely Source of Contamination
Copper	2014	1.3	1.3	0.954	0	ppm	N	Erosion of natural deposits; Leaching from wood preservatives; Corrosion of household plumbing systems.

2014 Annual Water-Quality Report (continued)

WATER QUALITY TEST RESULTS

Maximum Contaminant Level Goal or MCLG: The level of a contaminant in drinking water below which there is no known or expected risk to health. MCLGs allow for a margin of safety.

Maximum Contaminant Level or MCL: The highest level of a contaminant that is allowed in drinking water. MCLs are set as close to the MCLGs as feasible using the best available treatment technology.

Maximum residual disinfectant level goal or MRDLG: The level of a drinking water disinfectant below which there is no known or expected risk to health. MRDLGs do not reflect the benefits of the use of disinfectants to control microbial contaminants.

Maximum residual disinfectant level or MRDL: The highest level of a disinfectant allowed in drinking water. There is convincing evidence that addition of a disinfectant is necessary for control of microbial contaminants.

Definitions: The following tables contain scientific terms and measures, some of which may require explanation.

ppb: micrograms per liter or parts per billion - or one ounce in 7,350,000 gallons of water.

na: not applicable.

Avg: Regulatory compliance with some MCLs are based on running annual average of monthly samples.

ppm: milligrams per liter or parts per million - or one ounce in 7,350 gallons of water.

Regulated Contaminants

Disinfectants and Disinfection Byproducts	Collection Date	Highest Level Detected	Range of Levels Detected	MCLG	MCL	Units	Violation	Likely Source of Contamination
Chlorine	2014	1.2	0.9 - 1.6	MRDLG = 4	MRDL = 4	ppm	N	Water additive used to control microbes.
Haloacetic Acids (HAA5)*	2014	1	0 - 2.42	No goal for the total	60	ppb	N	By-product of drinking water disinfection.
Inorganic Contaminants	Collection Date	Highest Level Detected	Range of Levels Detected	MCLG	MCL	Units	Violation	Likely Source of Contamination
Barium	2014	0.078	0.078 - 0.078	2	2	ppm	N	Discharge of drilling wastes; Discharge from metal refineries; Erosion of natural deposits.
Fluoride	2014	0.82	0.82 - 0.82	4	4.0	ppm	N	Erosion of natural deposits; Water additive which promotes strong teeth; Discharge from fertilizer and aluminum factories.
Iron	2014	0.516	0.516 - 0.516		1.0	ppm	N	This contaminant is not currently regulated by the USEPA. However the state regulates. Erosion of natural deposits.
Manganese	2014	32.9	32.9 - 32.9	150	150	ppb	N	This contaminant is not currently regulated by the USEPA. However the state regulates. Erosion of natural deposits.
Nitrate [measured as Nitrogen]	2014	0.0737	0 - 0.0737	10	10	ppm	N	Runoff from fertilizer use; Leaching from septic tanks; sewage; Erosion of natural deposits.
Sodium	2014	21.4	21.4 - 21.4			ppm	N	Erosion from naturally occurring deposits: Used in water softener regeneration.
Radioactive Contaminants	Collection Date	Highest Level Detected	Range of Levels Detected	MCLG	MCL	Units	Violation	Likely Source of Contamination
Combined Radium 226/228	2014	9	0.6 - 9	0	5	pCi/L	N	Erosion of natural deposits.
Gross alpha excluding radon and uranium	2014	9	2.8 - 14.2	0	15	pCi/L	N	Erosion of natural deposits.
Volatile Organic Contaminants	Collection Date	Highest Level Detected	Range of Levels Detected	MCLG	MCL	Units	Violation	Likely Source of Contamination
Dichloromethane	2014	0.8	0 - 0.8	0	5	ppb	N	Discharge from pharmaceutical and chemical factories.
Xylenes	2014	0.0008	0 - 0.0008	10	10	ppm	N	Discharge from petroleum factories; Discharge from chemical factories.

2015
UPCOMING EVENTS

June 20
CabCab "Say My Name"

July 18
The Arranmore Polo Classic

August 1
CabCab "Funkadelic Dance Party"

August 27
Art of the Asado: An Evening
to Support ArranmoreArts

September 11
CabCab "Heroes"



ARRANMORE
ARTS

tickets for CabCab & Asado:
arranmorearts.org

tickets for Polo Classic:
arranmoreevents.com



Oswego Family YMCA JOIN THE FUN

YMCA Summer Camp and Programs

Enroll your child in a YMCA camp today!

- Programs offered for preschoolers, kindergarteners, school age youth & teens
- Professionally Trained Staff
- ACA Accredited
- Healthy Kids Focus
- Financial Assistance Available
- Extended Care Available
- Fun Field Trips

JOIN US IN THE FALL FOR SPORTS LEAGUES, BASKETBALL, FLOOR HOCKEY, FLAG FOOTBALL!

To learn more and register for camp visit
oswegofamilyymca.org/camp

Oswego Family YMCA | 160 East Washington Street, Oswego, IL 60543 | 630.551.0797

JUST LIKE YOU, WE'VE MADE OSWEGO OUR HOME!

We are here to help our community grow!

HERE IS HOW WE ARE HELPING THE GROWTH IN OSWEGO:

- **Millennium Sponsor** of **Oswego PrairieFest**
- Contributed **\$20,000** in **scholarships** to Oswego and Oswego East High Schools
- **\$10,000** in **athletic donations** to both high schools
- **Platinum Oswego Chamber member**
- **Founder** of the Oswego Crosstown Challenge
- **Financing** local business growth

Oswego's Only True Community Bank



www.alliedfirst.com

3201 ORCHARD RD, OSWEGO
PH: 630-554-8899

YOUR HIGH-TECH BANK
with the Home Town Touch



We care about your family's safety and security!

Range and Field Training Team

tyackley@rftteam.com
allcalibers.com
630-392-3966

Ladies Day at the Range - 8-30

NO COST TRAINING
for IL CCW

Part 1 Part 2

09-12	09-13
10-11	10-10
11-14	11-15

Defensive Pistol

7-18	8-15
9-19	10-17

behrens | b | financial

Mark A Behrens, AAMS®

LPL Financial Planner
5 E Washington Suite 1B
Oswego, IL 60543

P 630.551.4555

F 630.551.4550

mark.behrens@lpl.com

www.behrensfinancial.com

Securities offered through LPL Financial. Member FINRA/SIPC.

PUBLIC WORKS DEPARTMENT TO PERFORM DRY WEATHER SCREENINGS

During the hot dry days of summer the Public Works Department will be performing Dry Weather Screenings. What is Dry Weather Screening?

Dry weather screening is a field test method for inspecting storm water drainage areas to help locate and identify potentially harmful and illegal discharges to the Village's storm water system. The field observation and measurements are performed at each outfall. The screenings help to detect pollutants such as oil and grease, litter, heavy metals and sediment.

Investigating dry weather flow is also an opportunity to identify illegal structures that may be connected to the municipal storm water system. An illegal connection can cause serious problems to our water resources by discharging pollutants into the storm system.

For more information on storm water or NPDES, visit the Village of Oswego website at www.oswegoil.org.

TREE CITY NEWS

The Village of Oswego has been named a 2014 Tree City USA recipient for the 21st year. The Tree City program is sponsored by the National Arbor Day Foundation in cooperation with the National Association of State Foresters and the USDA Forest Service.

In addition to this year's 21st award, Oswego previously received its 10th year Growth Award, has been named a "Sterling Tree City USA Community", and received a "2008 Trees for Success" tree planting award.

The Growth Award recognizes environmental improvements and higher levels of tree care in the Tree City USA communities. Sterling Communities are regarded as leaders in Community Forestry and are often looked upon as innovators. The Trees for Success tree planting awards are given to communities in recognition for support to inspire schoolchildren to grow urban forests.

The Illinois Tree City program is #3 in the nation with the Growth and Tree City Campus programs being #1 in the nation.

Oswego currently has four certified Arborist's on staff and continues to do its part to enhance the community forests and be one of the more than 3400 Tree City USA communities.

PUBLIC WORKS DEPARTMENT CONSOLIDATES OFFICES

The Public Works Department is now under one roof! Department administrative staff relocated from the Village Hall to the Public Works Facility in order to provide better communication with field employees.

We provide the following services at the Public Works Facility

- Free mulch for your garden (available 24-hours a day)
- Electronics recycling - 2nd Saturday of each month
- ECO Reuse and Recycling Extravaganza- September 12
- Sand bags (available at select times, visit our website for more information)
- Hydrant meters for construction
- Watering permits for newly laid sod
- Permits for filling swimming pools

The Public Works Facility is located at 100 Theodore Drive. We are located east of Plainfield Road and south of Oswego High School, next to the school buses. Our hours are 7:00 AM to 3:00 PM, Monday through Friday. Our phone number is 630-554-3242.

WATER CONSERVATION

Oswego obtains its water from a deep underground pool of water called an aquifer. As this source of water is limited, Oswego is one of many communities which have enacted conservation regulations to help ensure that water is available for everyone. We ask your cooperation in complying with the following regulations:

Watering from the Village of Oswego water distribution system may only be used as follows:

All properties with even-numbered street numbers (i.e. numbers ending in 0, 2, 4, 6, or 8) may use village distributed water for sprinkling or automatic water systems for plant or yard watering on even-numbered calendar dates between the hours of 4:00 a.m. to 9:00 a.m. and 6:00 p.m. to 9:00 p.m.

All properties with odd-numbered street numbers (i.e. numbers ending in 1, 3, 5, 7, or 9) may use Village-distributed water for sprinkling or automatic water systems for plant or yard watering on odd-numbered calendar dates between the hours of 4:00 a.m. to 9:00 a.m. and 6:00 p.m. to 9:00 p.m.

All non-addressed properties including, but not limited to, subdivision entrances, roadway islands, and parkways may use village distributed water for sprinkling or automatic water systems for plant or yard watering on Mondays, Wednesdays, and Fridays between the hours of 6:00 a.m. and 9:00 a.m. and also between the hours of 6:00 p.m. and 9:00 p.m.

Notwithstanding the provisions of the paragraphs above, the following special regulations shall apply:

There shall be no restrictions as to hours or days when water from the Village water distribution system may be used for watering or sprinkling gardens, trees, shrubs, or other outdoor plants where such watering or sprinkling is done by a person using a hand-held watering device.

The automatic watering of trees and shrubs by means of root feeders within the drip line of the tree or shrub will follow the even/odd restrictions stated above.

The planting of sod or grass seed is prohibited during the months of July and August.

Property owners or residents who want to continuously water a newly seeded, slit-seeded, or sodded area more than ten (10) square yards will need to obtain a permit at the Public Works Department, at Village Hall located at 100 Parkers Mill. (There is no fee for this permit; however, violators will be fined.) (Village Code 8-7-14)

Filling swimming pools: Persons wishing to fill their pool may have the water brought in by tank by a private contractor or use their private garden hose to do so. The filling of swimming pools with hydrant water is prohibited. If using a private hose, the homeowner will follow the water conservation rules. If, in the case of a new pool, and filling will take longer than the conservation limitations, a FREE permit will be issued to allow the hose to run for 48 hours. Keep in mind that the permit is free, and violators will be fined.

WATER SHUTOFF VALVE



Do you know where your indoor water shutoff valve is? There are times when a leak can occur in the water service line inside the home, and a public works employee is not immediately available to turn the water off at the street. Most homeowners can turn off their water at their indoor valve by their water meter until help can arrive.

If you do not know where your indoor shutoff valve is, please call the Public Works Department at 630-554-3242 to schedule an appointment for someone to come show you where it is and how to turn it off. This service is FREE and can save you from having a water mess in your home.

CALL JULIE BEFORE YOU DIG!

Whether you are doing simple work such as planting trees or bushes, or more complicated work such as building a house, know that hidden dangers may lurk below the ground. Unseen, but always present are underground pipelines, cables, and other facilities that energy, communications and other companies and municipalities use to provide services that make for a better standard of living. Underground facilities can be damaged or ruptured by tools, power equipment, or explosives, and includes, grading, trenching, digging, ditching, drilling, auguring, boring, tunneling, scrapping, cable or pipe plowing, and driving. Loss of natural gas, telephone, water, or electricity can leave communities without such vital services as fire, police, and medical protection. When damaged, these services can endanger public safety and property – they can also be expensive and time consuming to repair.

State law requires that you call JULIE to assist with finding such lines.

TOLL FREE 1-800-892-0123 or 811
TWO WORKING DAYS BEFORE YOU DIG
(Excluding Saturdays, Sundays & Holidays)
OPERATES 24 HOURS/365 DAYS A YEAR

JULIE, also known as the Illinois One-Call System, gives property owners, contractors, and excavators a way of contacting owners of underground facilities who are members of JULIE. This locating request information is sent to the JULIE member companies who have facilities in the requested locating area. The call is informed which JULIE member companies will be notified and also that the caller is encouraged to search the area for the facilities of non-JULIE members and notify them on their own.

For more information, please visit www.julie1call.com or call 811 or 815-741-5000.

BRUSH PICKUP

The Village will implement brush collection by zones this year. There will be two zones. Zone A includes all properties east of the Fox River and north of US 34, as well as those properties west of the Fox River and north of Mill Road. Zone B includes all properties east of the Fox River and south of US 34, as well as those properties west of the Fox River and south of Mill Road. We will collect brush from each zone once each month beginning in April. The last pickup will be in October just prior to the start of the leaf collection program. Collection weeks are as follows:

Zone A

June 1-5
July 6-10
August 3-7
September 14-18
October 5-9

Zone B

June 8-12
July 13-17
August 10-14
September 21-25
October 12-16

Place all brush at the curb by 7:00 a.m. on Monday morning of the designated week, but no earlier than noon the Friday before. The Public Works trucks will pass through an area once and will not return for brush placed after the deadline.

Brush is defined as tree and bush branches that are less than 5" in diameter. Place unbundled brush parallel or perpendicular to the street in neat bundles with all ends facing the same direction. Do not put brush in a container or in the street.

We will not pick up logs, wood, root balls, cuttings, or grass clippings. Crews will place an orange tag on your door indicating the reason they did not pick up the brush if it is the wrong material or placed at the curb prior to the deadline.

The Village provides this service for residents. The Village does not accept landscaping generated by contractors.

OSWEGO MAKES REPORTING AN ISSUE EASY ON YOUR SMARTPHONE

Since July 1, 2014, residents and Village personnel have generated more than 1,500 work requests to fill potholes, repair streetlights, and replace dead trees, among many other types of requests. You, too, can easily report issues – simply visit the Village of Oswego website at www.oswegoil.org or download the mobile app. It makes reporting a problem to the Village easier than ever. We encourage you to attach a photo or video, as a visual reference will help the Village quickly identify the problem. Residents can track the status of reports and follow your issue from the time it is reported until it is resolved. Village staff responds to requests Monday through Friday between 8 am and 3 pm. If this report comes in on a holiday, weekend or after-hours, Village staff will read it on the next business day. If you would like to report an issue with your smart phone, please download our Oswego Click n' Fix mobile app. NOTE: for emergencies or other urgent matters that require immediate attention or a police response, dial 9-1-1.



If you have a smartphone, and would like to report an issue, please download our app. Oswego Click 'n Fix is available for download as an app on the following platforms:







Ken Boncela
Agent

21 West Merchants Drive
Oswego, IL 60543

Bus: 630-801-8942
Fax: 630-801-8944
kboncela@farmersagent.com
www.farmersagent.com/kboncela

Jim Cargo
Financial Advisor



Edward Jones
MAKING SENSE OF INVESTING



25 W. Merchants Drive
Oswego, IL 60543-9456
Ofc. 630-896-1701
Fax 888-759-8108
www.edwardjones.com



100 Parkers Mill
Oswego, IL 60543

PRSR STD
U.S. POSTAGE
PAID
PERMIT No. 7
OSWEGO, IL

*****ECRWSSDDM***

Postal Customer

Join us for great events all summer long!

Market on Main Street and Oswego Beats & Eats have joined forces to create unforgettable saturday night events!



Market on Main Street!

Beats & Eats

July 25 & August 29!

4-10pm

Join us in downtown Oswego for local, regional & national bands, Chicagoland's finest Food Trucks, and unique specialty vendors!



2015

Movies In the Park

June 17th, "Boxtrolls"

July 15th, "The Lego Movie"

August 5th, "Big Hero 6"

Join us on the plaza at Village Hall. Movies begin at 8:30pm or dusk.

Village of Oswego
OSWEGO CULTURAL ARTS



A NEW INTERACTIVE ART EXPERIENCE!

AUGUST 16TH

DOWNTOWN OSWEGO

9AM-3PM

JOIN THE OSWEGO CULTURAL ARTS COMMISSION FOR:
ARTIST DEMONSTRATIONS LIVE MUSIC
KIDS ACTIVITIES FOOD FOR PURCHASE AND MORE!



KICK OFF YOUR INDEPENDENCE DAY WEEKEND WITH A FREE FIREWORKS SHOW

3RD OF JULY FIREWORKS! BEST VIEWED FROM PRAIRIE POINT & PRAIRIEFEST PARK @ 9:30PM

For more information call 630-554-4636 or log onto www.oswegoil.org