

Summer 2019

Oswego News

The official newsletter of the Village of Oswego, Illinois

Go green this summer!

Learn more about how the Village of Oswego can help you help preserve our environment p. 6



Jump on in!
The water's fine!
Your 2018 Annual Water Quality Report is inside.
See pages 11-14.

Meet the new Village Board

New Village President, Trustees pledge responsiveness to the needs of residents, p. 3

OSWEGO VILLAGE BOARD

TROY PARLIER *PRESIDENT*
TINA TOUCHETTE *CLERK*
JAMES MARTER II
TERRY OLSON
PAM PARR
LUIS PEREZ
JUDY SOLLINGER
BRIAN THOMAS

ADMINISTRATION

DANIEL DI SANTO *VILLAGE ADMINISTRATOR*
JEFF BURGNER *POLICE CHIEF*
CHRISTINA BURNS *ASST. VILLAGE ADMINISTRATOR/
HR DIRECTOR*
CORINNA COLE *ECONOMIC DEVELOPMENT DIRECTOR*
JAY HOOVER *BUILDING & ZONING MANAGER*
MARK HORTON *FINANCE DIRECTOR*
JENNIFER HUGHES *PUBLIC WORKS DIRECTOR*
ROD ZENNER *COMMUNITY DEVELOPMENT DIRECTOR*



OSWEGO NEWS

Oswego News is the official newsletter of the Village of Oswego, published quarterly and mailed to more than 14,000 Oswego postal customers. Comments, suggestions and questions, including advertising, should be directed to:

JENETTE STURGES
COMMUNITY ENGAGEMENT COORDINATOR
VILLAGE OF OSWEGO
100 PARKERS MILL
OSWEGO, IL 60543

630-551-2392
JSTURGES@OSWEGOIL.ORG

DEPARTMENTS

ADMINISTRATION 630-551-2360
BUILDING & ZONING 630-554-2310
COMMUNITY DEVELOPMENT 630-554-3622
ECONOMIC DEVELOPMENT 630-551-2335
FINANCE 630-554-0864
POLICE (NON-EMERGENCY) 630-551-7300
PUBLIC WORKS 630-554-3242
VILLAGE CLERK 630-554-3259
UTILITY/WATER BILLING 630-554-2282

Greetings from Oswego's new Village President Troy Parlier



Hello friends and neighbors!

Finally, after an extended, gray winter, we have returned to sunshine and warmth! As temperatures have increased, so has activity in our village. We had a wonderful event in May, Wine on the Fox, where more than 4,000 people enjoyed the event, and we are just heading into PrairieFest with many more events to come.

Thank you for showing confidence in our team to lead Oswego. We take this great responsibility very seriously. One of our campaign pledges, to be responsive to the residents of Oswego, begins with communication. Village leadership will be very visible around the community. We will be holding Meet and Greets at several of our Village facilities and offering tours to the community in hopes you gain a better understanding of how the Village operates. This will also provide you with the chance to meet our professional staff. Please share your thoughts and opinions with us. We value them!

It doesn't stop there. Please feel free to approach us when we are out at other events. You can invite us to your community events as well. You can even share your thoughts and opinions with me when I'm trying to catch and release a smallie on the banks of our river. Please don't hesitate to do this. After all, we work for you!

Best regards,

Troy Parlier
Oswego Village President

Unique shopping. Local impact.

Downtown Oswego is under construction this summer, but our locally owned shops and restaurants are still easy to access and open for business. Find treasures available nowhere else in our unique Oswego shops and keep your dollars in the community as we continue #BuildingOswego.

goDowntown...and see what's next.

Find events, shopping, construction updates and much more at www.goOswego.org

Meet the new members of the Oswego Village Board

The May 7 inauguration installed a new Village President and three new trustees to the Oswego Village Board. The new board will be responsible for guiding Village policy.



Left to right: Trustees James Marter II, Terry Olson, Judy Sollinger, Village President Troy Parlier, Trustees Brian Thomas and Luis Perez. Not pictured: Trustee Pam Parr.

THE VILLAGE OF OSWEGO has new leadership at the helm. On Tuesday, May 7, Judge Timothy McCann swore in new Village President Troy Parlier and three new trustees – James Marter II, Terry Olson, and Brian Thomas.

“We will always remember that we work for our residents,” Village President Troy Parlier said in his remarks following his oath of office. “We will be responsible to their needs both present and future. We will work with all of our intergovernmental partners to bring the best future that we can to our great village.”

The new members of the Village Board were elected in April, and will each serve a four-year term. ■

“We will always remember that we work for our residents. We will be responsible to their needs both present and future.”

FROM THE VILLAGE CLERK

WATCH MEETINGS FROM THE COMFORT OF HOME

Log on to our website at www.oswegoil.org and click on Meeting Agendas & Videos on the homepage. Committee of the Whole meetings are held on the first and third Tuesday of each month at 6 p.m., followed by the Regular Village Board meeting at 7 p.m.

NEED TO REGISTER TO VOTE?

We have the solution. Several employees at Village Hall are certified Registrars. Staff is usually available Monday through Friday from 8 a.m. to 5 p.m. For more information visit our website at www.oswegoil.org and click on I Want To. Information can be found in the Apply For section. Additional information can also be found on the Kendall County Election & Voter information page at www.co.kendall.il.us.

On the cover: Fourth-grade students at Prairie Point Elementary School helped Village of Oswego Public Works staff plant the official 2019 Arbor Day Tree on Friday, April 26, in front of their school. Oswego has been named an Arbor Day Foundation Tree City USA for 25 years.

ON THE COVER

PARTNER WITH US TO GO GREEN IN OSWEGO

The Village of Oswego is a regional leader in sustainability, thanks to our partnerships with other organizations and the dedication of you, our residents. Here's just a sample of things you can do to make your home and garden greener, and what the Village is doing to green up our municipal operations.

YOU CAN...

HAVE YOUR GARDEN CERTIFIED THROUGH CONSERVATION @ HOME.

The Village of Oswego partners with The Conservation Foundation for Conservation@ Home, which recognizes homeowners who take steps to create water- and pollinator-friendly landscapes on their property. A Conservation Foundation volunteer can visit and assess your garden, offer suggestions, and recognize exceptional efforts with a sign for your yard. Conservation Foundation volunteers may also be able to assist your homeowners association with suggestions for greening up common areas, like detention ponds. Learn more at www.theconservationfoundation.org.

SAVE WATER WITH A RAIN BARREL.

Another partnership with The Conservation Foundation, the rain barrel program provides rain barrels at a reduced cost to residents. Rain barrels save water that falls onto your rooftop during summer storms so that you can use that soft rainwater in your garden when you need it. Order a rain barrel on The Conservation Foundation's website.

RECYCLE YOUR ELECTRONICS.

Did you miss Community Recycling Day? Our waste hauler, Groot Industries will come to your home to pick up outdated electronics, saving rare earth metals and toxic components from the dump. See page 10.

PICK UP A GREEN GUIDE.

The Village of Oswego produces a handy guide every year that helps residents figure out how to properly dispose of hard-to-recycle items, from batteries to cleaning chemicals. Find a copy at Oswego Public Works, 100 Theodore Drive, or download one from the Garbage & Recycling page of www.oswegoil.org.

Storm sewers like this one carry rainwater runoff from lawns and streets into the Fox River. You can help keep the river clean by reducing fertilizer use.



When you pay your electric bill to ComEd, the portion of your bill that pays for your s





Rain barrels conserve water in the summer and provide soft, mineral-free water for delicate garden plants.

COMPOST AT THE CURB ON YOUR REGULAR GARBAGE DAY. Groot Industries offers Oswego residents an optional curbside yard waste and food scrap composting service from April 1 through Nov. 30. A fee applies for this optional service, but you'll save on stickers. Call Groot at 877-775-1200 to learn more.

MAKE YOUR LAWN REALLY GREEN. When it comes to lawn fertilizer, a little goes a long way. By cutting back on how much fertilizer you apply, you reduce runoff of excess nitrogen. Too much nitrogen in ponds, streams and rivers causes algae blooms that starve fish and other species of oxygen. For more on watering, check out page 7.

THE VILLAGE...

THE OSWEGO GREEN TEAM MEETS MONTHLY, and includes representatives from several Village departments to implement environmentally friendly changes to Village operations, facilities and services. Recent efforts have cut down on paper consumption and reduced waste at events.

s for your supply supports renewables like wind and solar energy.



THE FINANCE DEPARTMENT COMPARISON SHOPS ANNUALLY to find 100% renewable energy for all Oswego residents who participate in electrical aggregation -- all for the same price as coal and natural gas. Unless you opt out, the price you pay on your electric bill every month helps support Illinois-based wind and other renewable technology.

PUBLIC WORKS CREWS USE SMART SALTING techniques to reduce the amount of salt that our trucks spread in the winter. Using less salt prevents runoff, which helps keep the Fox River and other waterways healthier and saves money.

OSWEGO IS A SIGNATORY TO THE GREENEST REGION 2 COMPACT. Along with more than 70 other communities around Chicagoland, Oswego is actively working towards sustainable goals in climate, land use, energy, water, waste and more.

OUR BUILDINGS SAVE RESOURCES. Village Hall, Public Works and the Oswego Police Station have motion-sensor LED lighting, native landscaping and other features and fixtures that save energy and water. The police station also includes solar-powered radiant heating.

WE'RE ADVOCATING FOR METRA SERVICE IN KENDALL COUNTY. Bringing a public transportation option to Oswego can help reduce the number of cars traveling between Oswego and Chicago every day.

For even more on how the Village of Oswego goes green, more ideas for how residents can help, and information about Greenest Region 2 initiatives, visit oswegoil.org and click 'Green Practices.' ■

BRUSH AND YARD WASTE PICK-UP

BAGGED YARD WASTE COLLECTION

Groot's yard waste pick-up begins Monday, April 1, and continues weekly through Friday, Nov. 29.

Yard waste is defined as grass or shrubbery cuttings, leaves, small tree limbs and other materials accumulated as the result of the care of lawns, shrubbery, vines and trees.

Yard waste material will be collected only if it is placed in a 30-gal. Kraft paper bag with a Groot Industries yard waste sticker affixed to the front of the bag. Yard waste stickers do not expire, regardless of any dates which may appear. Yard waste stickers purchased in 2019 will cost \$2.00 each. Kraft bags and stickers are available at local retail grocery and hardware stores.

Set your yard waste at the curb by 6 a.m. on your regularly scheduled garbage day.

COMPOST WITH A YARD WASTE CART!

Do you generate a lot of yard waste and food scraps? Want to do the best for the environment?

Consider a Yard Waste Subscription cart from Groot. You'll get a 95-gal. cart to dispose of compostable food scraps and yard waste. Just put it at the curb on your regular garbage day and never sticker again!

A fee applies for this optional service. Contact Groot to sign up at (800) 244-1977. ■



Correct (left) and incorrect (right) brush piles for collection. To ensure that your brush is collected, place it neatly at the curb with cut ends all facing the same direction.

BRUSH PICKUP STARTS APRIL 1

THE VILLAGE of Oswego offers free brush collection throughout the growing season.

ZONES

The Village collects brush on alternate weeks by zone. There are two separate residential brush collection zones. See the map below. A list of the neighborhoods located in each zone can be found on the Brush, Leaves and Yard Waste page at www.oswegoil.org.

RESTRICTIONS

Brush is defined as tree and bush branches less than 5 inches in diameter. The brush collection program is not intended to handle branches, logs, or tree stumps as a result of large-scale tree trimming or removal. Crews

ZONE COLLECTION DATES

Zone A	Zone B
June 3	June 10
July 1	July 8
August 5	August 12
September 3	September 9
October 7	October 14

will not pick up logs, wood, root balls, cuttings, or grass clippings. Crews will place an orange tag on your door indicating the reason they did not pick up the brush if it is the wrong material or placed at the curb too early.

FOR COLLECTION

Place brush at the curb by 7 a.m. on Monday morning of the designated week but no earlier than noon the Friday before. The Public Works trucks will pass through an area once and will not return for brush placed after the deadline. Place unbundled brush parallel or perpendicular to the street in neat bundles with all cut ends facing the same direction. Do not put brush in a container or in the street.

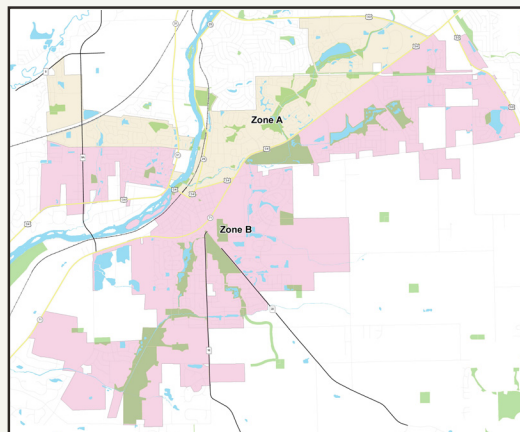
The Village does not accept landscaping waste, tree branches, or tree removals as a result of contracted work. Crews will not remove brush from commercial, industrial or other non-residential properties. ■

BRUSH COLLECTION ZONES

Zone A includes all properties east of the Fox River and north of Route 34 as well as those properties west of the Fox River and north of Mill Road. (Marked in yellow.)

Zone B includes all properties east of the Fox River and south of Route 34 as well as those properties west of the Fox River and south of Mill Road. (Marked in pink.)

A list of neighborhoods by zone is at www.oswegoil.org/government/departments/public-works/brush-leaves-yard-waste.aspx





SAVE WATER! SPRINKLING RESTRICTIONS ARE IN EFFECT

IN OSWEGO, drinking water is supplied by an underground aquifer with a limited supply. Ensuring the sustainability of our region's water supply takes the efforts of everyone. To that end, the following restrictions on watering are in place:

Properties with even-numbered street addresses may use Village-distributed water for sprinkling or automatic water systems for yard watering on even calendar dates 4-9 a.m. and 6-9 p.m.

Properties with odd-numbered street addresses may use Village-distributed water for sprinkling or automatic water systems for yard watering on odd calendar dates 4-9 a.m. and 6-9 p.m.

All non-addressed properties including

but not limited to subdivision entrances, roadway islands and parkways may use Village-distributed water for sprinkling or automatic water systems for yard watering on Mondays, Wednesdays, and Fridays 6-9 a.m. and 6-9 p.m.

There are no restrictions when using a hand-held watering device to water gardens, trees, shrubs, or other plants. Automatic watering of trees and shrubs with root feeders within the drip line of the tree or shrub follows the same even/odd restrictions.

Planting sod or grass seed is prohibited during July and August.

Property owners or residents who want to continuously water a newly seeded, slit-seeded, or sodded area of more than

10 square yards must get a water permit at Village Hall or Public Works. This permit is free; however, violators will be fined.

Residents wishing to fill a swimming pool may have water brought in by tank through a contractor or may use a private garden hose. Filling swimming pools with hydrant water is prohibited. Residents using a private hose must follow the water conservation rules above.

If the filling will take longer than the conservation limitations, residents can get a permit to allow the hose to run for a period of 48 hours.

Questions? Call Public Works at (630) 554-3242. ■

BRADLEY

ENTERPRISES, INC.

QUALITY ROOFING AND SIDING SERVICES

SINCE 1955

630.554.2225 www.bradleyroofing.com

FOURTH OF JULY & LABOR DAY

NO TRASH COLLECTION

Groot Industries will not pickup residential trash and recycling on Thursday, July 4, or Monday, September 2. Trash will be delayed by one day for all customers scheduled for pickup on or after the holiday. For more information, please see the Village website or call Public Works at (630) 554-3242. ■

IL License #192-000260

CITADEL™

LOCK & SECURITY COMPANY

PROTECTING WHAT YOU VALUE MOST.

FULL LOCKSMITH SERVICES:

- Commercial Door Hardware, Doors/Frames Installed
- Rekeying Services

- Residential Services Available
- Design/Layout Master Key Systems

Authorized dealer for
ASSA ABLOY

JOIN US FOR EXCEPTIONAL SPECIAL EVENTS THIS SUMMER!

SCAM Awareness Day

Fri., June 7: 9:30am- 1pm
Learn from a Panel of Experts

Community Mental Health Day

All Ages Invited
Tues., June 25: 9am-2:30pm
Understanding, Hope & Healing

Intergenerational Talent Show

Aug. 7: 6:30- 8pm All Ages Invited

Kendall Co. Congregate Meal Program:
Mon, Wed & Thurs at noon. (Tues. Bistro Lunch)

Oswego Senior Center

156 E. Washington St.,
Oswego
(630) 554-5602
www.oswegoseniorcenter.org

Oswego Senior Center is open to
all area Seniors age 60 or more!

FROM THE VILLAGE ARBORIST

WATER YOUR TREES THIS SUMMER FOR YEAR-ROUND HEALTH

OUR TREES go through some drastic weather extremes in our area and we need to do what we can to help them thrive. Watering is an easy and beneficial way to help your trees during the summer months and in drought-like conditions.

All trees will benefit from supplemental watering, but newly planted trees need the most attention during the first few years following planting. During the first few growing seasons, trees are expending a great deal of energy trying to get their roots established in the soil. Proper soil moisture will greatly help them develop a strong root system.

You can check soil moisture by inserting a garden trowel into the ground and moving the blade back and forth to create a small, narrow trench. Use your finger to touch the soil. If it is moist to the touch the tree does not need water. Over watering can be just as hazardous to your tree's health as under watering. If the soil is dry, place a garden hose near the trunk but not on trunk and turn on a slow stream of water for a period of



Improper mulching. Piling mulch around the trunk promotes rot.



A properly mulched tree.

15 minutes. Moist soil is good but soggy soil is not. A damp soil that dries for a short period of time will allow adequate oxygen to permeate the soil. Long, less frequent watering is healthier for your trees than short, frequent watering.

Another option for tree watering is the use a gator bag. These are slow release watering bags that deliver a high volume of water directly to a tree's root structure without wasting water through run-off or evaporation. These simply zip around the tree and you use a garden hose to fill them with water once or twice a week. They can be purchased at any garden center.

If you have any questions, contact the Public Works Department at (630) 554-3242. ■

FREE WOODCHIPS!

THE PUBLIC WORKS DEPARTMENT has free woodchips available for residents. These woodchips are the product of our brush pick-up program and other tree removal. This is coarsely cut wood from a variety of species, not the fine, uniformly sized and colored mulch you might purchase at a home improvement store. Still, these woodchips are effective at keeping water from evaporating from soil and will break down into nutrients for your garden. Homeowners may pick up the woodchips at the Public Works Facility, 100 Theodore Drive. Public Works hours of operation are 7 a.m. to 3 p.m. Monday through Friday. ■

GOT OLD ELECTRONICS? GROOT WILL COLLECT THEM FROM YOUR HOUSE!



DID YOU MISS Community Recycling Day? No worries. Our contracted waste hauler Groot Industries will come to your door to collect old electronics.

Call Groot at 877-775-1200 to schedule an electronic waste pickup. Acceptable e-waste items include: Televisions, monitors, printers, computers, tablets, keyboards and mice, FAX machines, videocassette recorders, portable digital music players, video game consoles, small scale servers, scanners, digital converter boxes, cable

receivers, satellite receivers, digital video disc recorders. All other electronics and household batteries are considered trash.

Groot's fee to collect any TV larger than 27 inches and/or heavier than 50 pounds is \$32.46 per piece. All other items listed above are picked up curbside at no charge.

Is your item not on the list? For more information on hard-to-recycle items, check out our Reuse and Recycle Guide on the Garbage & Recycling page of www.oswegoil.org.

Have other hard-to-recycle items? Find out how to recycle it with our Reuse & Recycle Quick Guide, available on the Garbage & Recycling page of www.oswegoil.org



FROM THE OSWEGO SENIOR CENTER



Oswego Senior Center

COMMUNITY MENTAL HEALTH DAY OFFERS UNDERSTANDING, HOPE, HEALING JUNE 25

INTODAY'S WORLD we are inundated with moments that cause us stress, from the rollercoaster of emotions that watching the evening news or social media produces, to worrying about people within our own network of family, friends and neighbors who are struggling with mental or cognitive wellness or a developmental disability.

Through the Community Mental Health Day conference, attendees can learn about conditions that affect mental, cognitive, or developmental health and learn about pathways for hope and healing. Listen to the keynote, "What's Understandable is Preventable" from Dr. Heidi Podjasek and Elizabeth Palatine of the Oswego School District on how adverse childhood experiences affect the physical and mental health of our community.

The conference includes four break-out sessions, including introductions to a wide range of conditions from anxiety, depression, and bipolar disorder to dementia, PTSD, suicide, autism, addiction, schizophrenia and hoarding. Breakout sessions later in the day cover topics including Finding Resilience, Rethinking Stress, Recovery, Demystifying Therapy, Ending Stigma, Exploring Music Therapy, Finding Connections, and Mindfulness, Exercise and Nutrition.

Community Mental Health Day: Understanding, Hope, and Healing will be held from 9 a.m. to 2:30 p.m. on Tuesday, June 25, at the Oswego Senior Center, 156 E. Washington Street, Oswego. The event is free and open to all ages, and lunch is provided. For more information and to register, call 630-554-5602. ■



**Family.
Friends.
Community.**

Janna Misek Ins Agcy Inc
Janna Misek, Agent
1136 Douglas Road
Oswego, IL 60543
Bus: 630-554-1540
Mon-Thurs 9:00am to 8:00pm
Friday 9:00am to 5:00pm
Saturday 9:00am to 12:00pm
Se habla Español

We're all in this together.
State Farm® has a long tradition of being there. That's one reason why I'm proud to support The Community of Oswego.
Here to help life go right.®



1801075

State Farm, Bloomington, IL

**Have 401(k)
questions? Let's talk.**



Jim Cargo
Financial Advisor
1063 Station Drive
Oswego, IL 60543
630-636-6317
www.edwardjones.com

Edward Jones
MAKING SENSE OF INVESTING

Member SIPC

PROPERTY OF THE SEASON



22-26 West Van Buren Street

A newer addition to Oswego's stone house buildings earns Property of the Season honors this summer

THE OSWEGO HISTORIC PRESERVATION COMMISSION is proud to nominate the stone building located at 22-26 West Van Buren Street as its Summer 2019 Property of the Season. Although many stone buildings around downtown Oswego were built in the mid 19th century, the property located at the corner of Main Street and Van Buren Street is much newer. Dr. Lewis J. Weishew constructed it in 1928, using it as offices for his medical practice.

Dr. Weishew was a prominent family practitioner who specialized in arthritis treatment. Except for a brief stint in the U.S. Army Medical Corps during the First World War, he practiced in Oswego his entire career. He worked out of this stone building from 1928 up until his death in 1948. In 1949, Dr. Saxon moved his own practice into the building. Around this time, the building was exponentially expanded to the size it is today with the gable roof line switching direction. The original arched entrance is still visible on the southwest corner facing Main Street. ■

Wanna tour? Tickets for the upcoming Stone House Walking Tour on June 1 are sold out, but you can still join the Historic Preservation Commission for the outdoor portions of the tour. See page 15.

KW KELLERWILLIAMS REALTY INFINITY

The Sartain Team
Real Estate Brokers

SOLD

SARTAIN TEAM

Tammy 630-774-5317
Scott 630-551-6263
www.thesartainteam.com

AN ARTISAN DISTILLING TASTING EVENT

LOCKED IN PHOTOGRAPHY

SPIRITS
on the
FARM
EST. 2017

Join us this fall for a unique cooperative tasting experience presented by The Oswego Area Chamber of Commerce and The Illinois Craft Distillers Association. Savor the spirits!

SATURDAY 9.21.19
1-7 PM
Tickets \$25/PERSON

DICKSON-MURST FARM
2550 DICKSON ROAD | MONTGOMERY

DETAILS AND TICKETS: SPIRITSDTF.COM

2018 Annual Water Quality Report

THE OSWEGO WATER DIVISION IS PLEASED to report that your drinking water meets or exceeds all water quality standards and that there were no violations issued in 2018. The Illinois Environmental Protection Agency regional office in Elgin conducted our three-year engineering evaluation, and our water system received an exceptional rating. The Oswego community water supply was also commended on its exemplary facility maintenance and updates, and the professionalism and courtesy of its employees.

Your tap water was tested according to U.S. EPA and state drinking water health standards. Our system vigilantly safeguards its groundwater supply, and we work hard to provide the best water possible. This report summarizes the quality of water that we provided last year and informs you of initiatives currently underway to address issues. Included are details about where your water comes from, what it contains, and how it compares to standards set by regulatory agencies. We are committed to providing you with this information because informed customers are our best allies. If you have any questions about this report or concerning your water system, please contact Timothy Zasada, Assistant Public Works Director - Utilities, at 630-554-3242. We want our valued customers to be informed about their water quality. If you would like to learn more, please feel welcome to attend any of our regularly scheduled board meetings the first and third Tuesday of each month at 7 p.m. at Oswego Village Hall, 100 Parkers Mill.

Drinking water, including bottled water, may reasonably be expected to contain at least small amounts of some contaminants. The presence of contaminants does not necessarily indicate that water poses a health risk. More information about contaminants and potential health effects can be obtained by calling the U.S. EPA's Safe Drinking Water Hotline, 1-800-426-4791.

Some people may be more vulnerable to contaminants in drinking water than the general population. Immuno-compromised persons such as persons with cancer undergoing chemotherapy, persons who have undergone organ transplants, people with HIV/AIDS or other immune system disorders, some elderly people, and infants can be particularly at risk from infections. These people should seek advice about drinking water from their health care providers. U.S. EPA and CDC guidelines on appropriate means to lessen the risk of infection by Cryptosporidium and other microbial contaminants are available from the U.S. EPA's Safe Drinking Water Hotline, 1-800-426-4791.

Oswego's current drinking water source is groundwater, delivered by eight wells. All of these wells are considered deep wells, and draw water from a sandstone aquifer. While these aquifers provide a high quality of water, these wells often contain elevated concentrations of Radium-226 and Radium-228. The Village of Oswego uses a filtration process for radium removal. The water from the Village's eight high-capacity deep wells contains naturally occurring radium as do many deep wells in northern Illinois. The radium level at

each well is below the Environmental Protection Agency's maximum allowable level of 5 picocuries per liter (pCi/L). Fluoride levels from the deep sandstone aquifer meet EPA and Illinois Department of Public Health standards for drinking water and no additional fluoride is added at any of the well sites. Oswego's Well No. 3 is located on Madison Street by the village center's 500,000-gallon water tower. This well produces 550 gallons per minute. Well No. 4 is located on Chicago Road. This well produces 550 gallons per minute. Well No. 6 is located in the Fox Chase subdivision next to the 300,000-gallon water tower. This well produces 1000 gallons per minute. Well No. 7 is in the Ogden Falls subdivision next to the 1.5 million gallon water tower. This well produces 1100 gallons per minute. Well No. 8 is located on Grove Road, a quarter-mile south of Plainfield Road. This well produces 1100 gallons per minute. Well No. 9 is located at 700 Yoakum Blvd. This well produces 1000 gallons per minute. Well No. 10 is located at 700 Cole Avenue and on site is a 1.5 million gallon water tower. This well produces 1000 gallons per minute. Well No. 11 is located at 6701 Tuscany Trail off of Orchard Road and on site is a 1.5 million gallon water tower. This well produces 1200 gallon per minute. All of the wells are treated to remove high levels of radium, chlorinated to kill any microbial contaminants that may be present, and treated with polyphosphate for corrosion control and mineral sequestration, prior to being delivered into the distribution system.

Due to favorable monitoring history, aquifer characteristics, and inventory of potential sources of contamination, IEPA our water supply was reissued a vulnerability waiver renewal for the sampling period of January 1, 2017, to December 31, 2019. The special exception permit extends sampling requirements to once every nine years for SOC's and cyanide and once every six years for VOC's for Wells No. 3, 4, 6, 7, 8, 9 & 10. Well No. 11 has not received waivers from IEPA at this time.

In addition to the informational section of the Water Quality Report, we have included a table for your review. This table will give you a better picture of the contaminants that were detected in your water.

Contaminants that may be present in source water include:

- Microbial contaminants, such as viruses and bacteria, which may come from sewage treatment plants, septic systems, agricultural livestock operations and wildlife.
- Inorganic contaminants, such as salts and metals, which can be naturally occurring or result from urban storm water runoff, industrial or domestic wastewater discharges, oil and gas production mining, or farming.
- Pesticides and herbicides, which may come from a variety of sources such as agriculture, urban storm water runoff, and residential uses.
- Organic chemical contaminants, including synthetic and volatile organic chemicals, which are by-products

of industrial processes and petroleum production, and can also come from gas stations, urban storm water runoff, and septic systems.

- Radioactive contaminants, which can be naturally occurring or be the result of oil and gas production and mining activities.

In order to ensure that tap water is safe to drink, USEPA prescribes regulations that limit the amount of certain contaminants in water provided by public water systems. FDA regulations establish limits for contaminants in bottled water, which must provide the same protection for public health.

The source water assessment for our supply has been completed by the Illinois EPA. If you would like a copy of this information, please stop by Village Hall or call our water operator at 630-554-3242. To view a summary version of the completed Source Water Assessments, including: Importance of Source Water; Susceptibility to Contamination Determination; and documentation/recommendation of Source Water Protection Efforts, you may access the Illinois EPA website at <http://dataservices.epa.illinois.gov/swap/factsheet.aspx>

Based on information obtained in a Well Site Survey, published in 1989 by the Illinois EPA, six potential sources or possible problem sites were identified within the survey area of Oswego's wells. Furthermore, information provided by the Leaking Underground Storage Tank Section of the Illinois EPA indicated several additional sites with ongoing remediations which may be of concern. The Illinois EPA has determined that the Oswego Community Water Supply's source water is not susceptible to contamination. This determination is based on a number of criteria including: monitoring conducted at the wells; monitoring conducted at the entry point to the distribution system; and the available hydrogeologic data on the wells. Furthermore, in anticipation of the U.S. EPA's proposed Ground Water Rule, the Illinois EPA has determined that the Oswego Community Water Supply is not vulnerable to viral contamination. This determination is based upon the completed evaluation of the following criteria during the Vulnerability Waiver Process: the community's wells are properly constructed with sound integrity and proper site conditions; a hydrogeologic barrier exists which prevents pathogen movement; all potential routes and sanitary defects have been mitigated such that the source water is adequately protected; monitoring data did not indicate a history of disease outbreak; and the sanitary survey of the water supply did not indicate a viral contamination threat. Because the community's wells are constructed in a confined aquifer, which should prevent the movement of pathogens into the wells, well hydraulics were not considered to be a significant factor in the susceptibility determination. Hence, well hydraulics were not evaluated for this groundwater supply.

continued, next page

2018 Annual Water Quality Report

2018 Regulated Contaminants Detected

The next several tables summarize contaminants detected in your drinking water supply. Here are a few definitions and scientific terms which will help you understand the information in the contaminant detection tables.

AL	Action Level: The concentration of a contaminant which, if exceeded, triggers treatment or other requirements which a water system must follow.
Avg	Average: Regulatory compliance with some MCLs is based on running annual average of monthly samples.
MCL	Maximum Contaminant Level: The highest level of a contaminant that is allowed in drinking water. MCLs are set as close to the Maximum Contaminant Level Goal as feasible using the best available treatment technology.
MCLG	Maximum Contaminant Level Goal: The level of a contaminant in drinking water below which there is no known or expected risk to health. MCLGs allow for a margin of safety.
MRDL	Maximum Residual Disinfectant Level: The highest level of disinfectant allowed in drinking water.
MRDLG	Maximum Residual Disinfectant Level Goal: The level of disinfectant in drinking water below which there is no known or expected risk to health. MRDLGs allow for a margin of safety.
N/A	Not Applicable
NTU	Nephelometric Turbidity Units
pCi/L	picocuries per liter: A measure of radioactivity
ppb	Parts per billion or micrograms per liter (ug/L) - or one ounce in 7,350,000 gallons of water.
ppm	Parts per million or milligrams per liter (mg/L) - or one ounce in 7,350 gallons of water.
TT	Treatment Technique: A required process intended to reduce the level of a contaminant in drinking water.

Coliform Bacteria

MCLG	Total Coliform MCL	Highest Number of Positive Samples	Fecal Coliform or E. coli MCL	Total Number of Positive E. coli or Fecal Coliform Samples	Violation	Likely Source of Contamination
0	MCL: presence of coliform bacteria in > 5% of monthly samples (for systems that collect 40 or more samples/month). A total of 2.3 positive samples allowed per month.	1	Fecal Coliform or E. Coli MCL: A routine sample and a repeat sample are total coliform positive, and one is also fecal coliform or E. coli positive	0	No	Naturally present in the environment. Coliforms are bacteria that are naturally present in the environment and are used as an indicator that other, potentially harmful, bacteria may be present.

Lead and Copper

	Date Sampled	MCLG	Action Level (AL)	90th Percentile	Number of sites over AL	Units	Violation	Likely Source of Contamination
Copper	2017	1.3	1.3	.722	0	ppm	No	Corrosions of household plumbing systems; erosion of natural deposits; leaching from wood preservatives. Copper is an essential nutrient, but some people who drink water containing copper in excess of the action level over many years could suffer liver or kidney damage. People with Wilson's Disease should consult their personal doctor. Samples are taken every three years.
Lead	2017	0	15	0	0	ppb	No	Corrosion of household plumbing systems; erosion of natural deposits. Infants and children who drink water containing lead in excess of the action level could experience delays in their physical or mental development. Children could show slight deficits in attention span and learning abilities. Adults who drink this water over many years could develop kidney problems or high blood pressure. Samples are taken ever three years.

If present, elevated levels of lead can cause serious health problems, especially for pregnant women and young children. Lead in drinking water is primarily from materials and components associated with service lines and home plumbing. The Village of Oswego is responsible for providing high quality drinking water, but cannot control the variety of materials used in plumbing components. When your water has been sitting for several hours, you can minimize the potential for lead exposure by flushing your tap for 30 seconds to 2 minutes before using water for drinking or cooking. If you are concerned about lead in your water, you may wish to have your water tested. Information on lead in drinking water, testing methods, and steps you can take to minimize exposure is available from the Safe Drinking Water Hotline or at <http://www.epa.gov/safewater/lead>.

2018 Annual Water Quality Report

	Collection Date	Highest Level Detected	Range of Levels Detected	MCLG	MCL	Units	Violation	Likely Source of Contamination
Disinfectants & Disinfection Byproducts								
Chloramines/ Chlorine	12/31/2018	1.7	1.6-2.0	4	4	ppm	No	Water additive used to control microbes. Some people who use water containing chloramines well in excess of the MRDL could experiences irritating effects to their eyes and nose. Some people who drink water containing chloramines well in excess of the MRDL could experiences stomach discomfort or anemia. Testing for chloramines is done daily.
Inorganic Contaminants								
Barium	2018	0.0615	0.0107-0.0615	2	2	ppm	No	Discharge of drilling wastes; discharge from metal refineries; erosion of natural deposits. Some people who drink water containing barium in excess of the MCL over many years could experience an increase in their blood pressure. This contaminant is tested every three years.
Fluoride	2018	1.26	0.82-1.26	4	4	ppm	No	Erosion of natural deposits; water additive that promotes strong teeth; discharge from fertilizer and aluminum factories. Some people who drink fluoride in excess of the MCL over many years could get bone disease, including pain or tenderness of the bones. Fluoride in drinking water at half the MCL or more may cause mottling of children's teeth, usually in children less than nine years old. Mottling, also known as dental fluorosis, may include brown staining and/or pitting of teeth, and occurs only in developing teeth before they erupt from the gums. This contaminant is tested every three years.
Iron	2018	0.22	0.0-0.22		1	ppm	No	This contaminant is not currently regulated by the U.S. EPA. However, the state regulates. Erosion of natural deposits. Excessive iron in water may cause staining of laundry and plumbing fixtures and may accumulate as deposits in the distribution system. The contaminant is tested every three years.
Manganese	2015	0.018	0-0.018	N/A	0.15	ppm	No	This contaminant is not currently regulated by the U.S. EPA. However, the state regulates. Erosion of natural deposits. Excessive manganese in the water may cause staining of plumbing fixtures and laundry. It may also produce an unpleasant taste in beverages, including coffee and tea. This contaminant is tested every three years.
Nitrite (measured as nitrogen)	2018	0.067	0-0.067	1	1	ppm	No	Runoff from fertilizer use; leaching from septic tanks, sewage; erosion of natural deposits. Infants below the age of six months who drink water containing nitrate in excess of the MCL could become seriously ill and, if untreated, may die. Symptoms include shortness of breath and blue baby syndrome. The contaminant is tested yearly.
Sodium	2018	69.9	18.8-69.9		N/A	ppm	No	Erosion from naturally occurring deposits; used in water softener regeneration. Monitoring is required to provide information to consumers and health officials that are concerned about sodium intake due to dietary precautions. If you are on a sodium-restricted diet, you should consult a physician. This contaminant is tested every three years.
Volatile Organic Contaminants								
Xylenes	4/1/2015	0.00202	0-0.00202	10	10	ppm	No	Discharge from petroleum factories; discharge from chemical factories. The state requires us to monitor fo certain contaminants less than once per year because the concentration of these contaminants do not change frequently. Some of our data, though accurate, is more than one year old. Some people sho drink xylenes in ecess of the MCL over many years could experience damage to their nervous system. This contaminant is tested every six years.
Radiological Contaminants								
Combined Radium 226/228	2018	5	0/4.58	0	5	pCi/L	No	Erosion of natural deposits. Some people who drink water containing radium 226 or 228 in excess of the MCL over many years may have an increased risk of getting cancer.
Gross alpha excluding radon and uranium	2018	7	2.07-6.9	0	15	pCi/L	No	Erosion of natural deposits. This contaminant is tested yearly.

2018 Annual Water Quality Report

Unregulated Contaminants: The U.S. EPA required water systems to monitor for new unregulated contaminants in 2018 and a second set of samples will be analyzed in 2019. Water systems are required to publish the analytical results of all detections of contaminants. The Village only had three contaminants detected, which are in the following table. If you would like to view the entire report for the 2018 data, contact Public Works at 630-554-3242.

Unregulated Contaminants UCMR4	Collection Date	Highest Level Detected	Range of Levels Detected	MCLG	MCL	Units	Violation	Likely Source of Contamination
Bromide	11/7/2018	0.090	0.020-0.090	N/A	N/A	ppm	No	Bromide is commonly found in nature. Mandatory health effects language has not been established.*
Germanium	11/7/2018	0.000362	0.000323-0.000362	N/A	N/A	ppm	No	Naturally occurring element; commercially available in combination with other elements and minerals; a byproduct of zinc ore processing; used in infrared optics, fiber optic systems, electronics and solar applications. Mandatory health effects language has not been established. Possible health concerns: kidney or liver function, anemia, muscle weakness, harm to the peripheral nervous system.*
Manganese	11/7/2018	0.00399	0.00399-0.0105	N/A	N/A	ppm	No	This contaminant is not currently regulated by the U.S. EPA. However, the state regulates. Erosion of natural deposits. Excessive manganese in the water may cause staining of plumbing fixtures and laundry. It may also produce an unpleasant taste in beverages, including coffee and tea.

*Unregulated Contaminants: A maximum contaminant level (MCL) for these contaminants has not been established by either state or Federal regulations, nor has mandatory health effects language been set. The purpose for monitoring these contaminants is to assist the U.S. EPA in determining the occurrence of unregulated contaminants in drinking water and whether future regulation is warranted.

Violation Summary Table

No violations were issued in 2018.



HETTS
Quality Pre-Driven Vehicles

Auto Sales

Warranties Available

Downtown by  in Oswego, IL

Matt Hettinger and John Hodgson in Sales
Owner: Ed Hettinger
Fax: (630) 554-9393
www.hettsautosales.com

Continuing the tradition of serving the Fox Valley

69 W. Washington St. (Rt 34)
Oswego, IL 60543
(630) 554-9339



God's Gifts Preschool
Oswego Presbyterian Church
www.godsgiftsps.com



Healthy Driven
FRAIDYCAT 5K
GHOST RUN 10K & MEOW MILE

SAVE THE DATE: 10.29.19 – All New Course!
9th Annual Healthy Driven FraidyCat 5K, Ghost Run 10K & Meow Mile
presented by Edward-Elmhurst Health and The Oswego Chamber of Commerce

Healthy Driven
Running Series



OSWEGO
AREA CHAMBER OF COMMERCE



USATF
USA TRIATHLON



73 W. Van Buren St. • Oswego, IL 60543

Phone: 630 554 3505
Fax: 630 554 0050

oswegochamber.org





JUNE

01 Tickets for the **Stone House Walking Tour** are already sold out, but you can still join the Historic Preservation Commission for the outdoor portions of the tour by meeting at the Little White School Museum at 10 a.m. Visit www.oswegoil.org for more information.

02 Find fresh produce from local farmers in the heart of downtown Oswego at the **Oswego Country Market**. Stop by Main Street from 9 a.m. to 1 p.m. every Sunday through September.

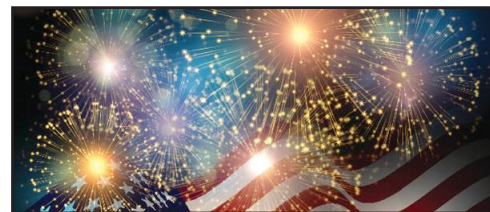
06 Join Oswego and Yorkville for **Raging Waves Movie Night!** Entrance is free after 6:30 p.m. for *Incredibles 2*. To receive a \$15.99 Over 48" Water Park Admission Ticket and a free bag of popcorn, use promo code **Incredibles19** at www.ragingwaves.com.

12 Unique finds await at **Emerson's Vintage Market**, on select Wednesdays all summer. See www.ecreekpotteryandtearoom.com for more.

13-16 **PrairieFest**, is the festival you know by heart! The Oswegoland Park District brings four days of live music, great food, a carnival, parade and more. The BoDeans and Spin Doctors headline. Stop by the Village of Oswego's booth for a chance to win Oswego swag! Free admission and parking. www.prairiefest.com.

18 The **Oswego Village Board** meets at 7 p.m. at Oswego Village Hall to vote on Village business. Meetings are open to the public and include a public forum for those wishing to speak. A Committee of the Whole meeting precedes at 6 p.m. to allow more in-depth discussion on issues. Agendas and live meetings are available at www.oswegoil.org.

20 The quiet life of a terrier named Max is upended when his owner takes in a stray named Duke. **Movies in the Park: The Secret Life of Pets** begins at dusk at Oswego Village Hall. Rated ages 6+ by Common Sense Media. Free.



JULY

04 Happy 243rd Birthday, America! Celebrate with **Fourth of July Fireworks** at dusk at Prairie Point Park. Weather updates will be posted to the Village's Facebook page. Rain date is July 5. Village offices will be closed. Garbage will be delayed one day.

16 The **Oswego Village Board** meets at 7 p.m. at Village Hall. Committee of the Whole meets at 6 p.m.

18 Decades after her original visit, the magical nanny returns to help the Banks siblings and Michael's children through a difficult time in their lives. **Mary Poppins Returns** begins at dusk at Oswego Village Hall. Ages 6+. Free.



AUGUST

02 See hundreds of police, fire and other vehicles parade through downtown Oswego for the **Emergency Vehicle Show**. Details at www.gooswego.org.

03 The **Emergency Vehicle Show** continues with a car show and more at the Park N Ride lot.

Join Arranmore Farm and Polo Club for an evening of polo, followed by a concert to benefit **One Feeds Two**. All the stars from your favorite CabCab concerts will be performing all night long. More info at www.arranmorefarmandpoloclub.com.

06 The **Oswego Village Board** meets at 7 p.m. at Village Hall. Committee of the Whole meets at 6 p.m.

08 Relive the days of the drive-in movie at the **Dine N Drive at the Park N Ride**. Oswego and Yorkville are partnering up to present *The Greatest Showman*, along with games and food vendors. Rated ages 10+ by Common Sense Media. Movie begins at dusk. Free.

20 The **Oswego Village Board** meets at 7 p.m. at Village Hall. Committee of the Whole meets at 6 p.m.

WEWAH
Mind, Body, Spirit

Weight Loss—Animal Wellness—Smoking—
Stress—Insomnia—Chronic Pain—
Energy & Emotional Balance

\$50 OFF
630-486-2524
www.wewah.net

59 S. Main Street
Oswego, IL 60543
630.551.2300

Bike Sales
Service & Rentals
Bike Rentals - \$16 for 2 hours!

Organized Shop Rides - Road and Mountain!
Bike Repair Classes available throughout the year,
call for details.
www.oswegocyclery.com

Looking for more family fun this summer? Check out our event calendar at www.gooswego.org



100 Parkers Mill
Oswego, IL 60543

PRSR STD
U.S. POSTAGE
PAID
PERMIT No. 7
OSWEGO, IL

*****ECRWSS*****

Postal Customer

Raise your glass to our Wine on the Fox sponsors!

MORE THAN 4,000 PEOPLE joined the Village of Oswego for Wine on the Fox, presented by John Greene Realtor. Thanks to our generous sponsors, funds raised at the event will benefit Fourth of July fireworks, Movies in the Park, and other events all year long in Oswego!



Cheers to downtown Oswego's own Floral Expressions for providing the decor!



Missed out on the fun? Visit www.goOswego.org for a calendar of events happening this summer around town.

THANK YOU TO OUR SPONSORS:



Michelle Meyer, executive director of Mutual Ground, welcomes LUNAFEST attendees before the short films. This year's LUNAFEST lineup included films from SxSW, Sundance and other prestigious festivals.

LUNAFEST BRINGS FILM FEST CIRCUIT TO OSWEGO

IN FEBRUARY, THE OSWEGO CULTURAL ARTS COMMISSION hosted LUNAFEST, a festival of short films by, for, and about women, at Oswego Village Hall. Proceeds benefited Mutual Ground, which offers emergency shelter, prevention, and counseling services for victims of domestic violence. Thanks to our sponsors for contributing to the arts and social services at the same time!

